

WAAS CH 60918 W04A	APP CRS 044°	Rwy Idg 7002 TDZE 21 Apt Elev 21
----------------------------------------	------------------------	-------------------------------------------------------------

RNAV (GPS) Y RWY 4

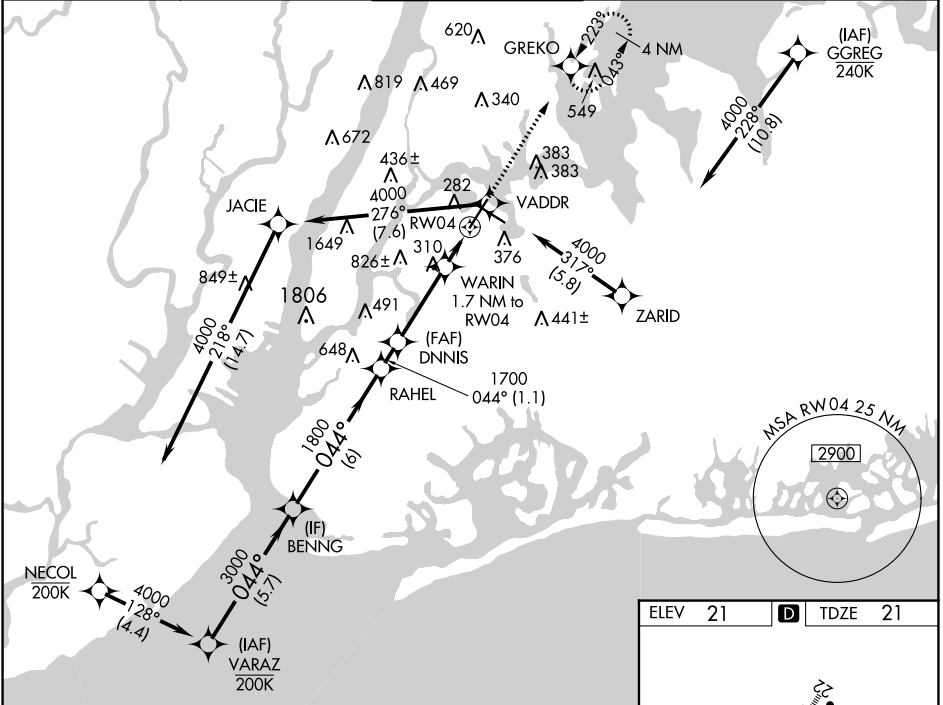
LAGUARDIA (LGA)

RNP APCH - GPS

▼ Rwy 4 helicopter visibility reduction below RVR 5000 NA. Inop table does not apply to LPV all Cats, and LNAV Cat A and B. For uncompensated Baro-VNAV systems, LNAV/VNAV NA below -12°C or above 54°C. For inop ALS, increase LNAV/VNAV all Cats visibility to 1 3/8 SM. Circling NA northwest of Rwy 4 and southwest of Rwy 13. Going below glidepath may not provide obstacle clearance inside DA. Crossing Rwy threshold below charted TCH may not provide required visual area obstacle clearance. *RVR 2400 authorized with FD or AP or HUD to DA.

MALSR 	MISSED APPROACH: Climb to 2000 direct GREKO and hold, continue climb-in-hold to 2000.
-----------	------------------------------------------------------------------------------------------

D-ATIS ARR 125.95	NEW YORK APP CON 120.8 263.0	LAGUARDIA TOWER 118.7 263.0	GND CON 121.7 263.0	CLNC DEL 135.2	CPDLC
D-ATIS DEP 127.05					

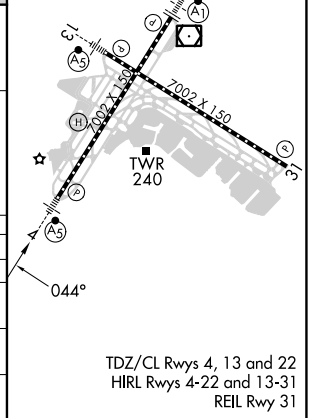


NE-2, 26 DEC 2024 to 23 JAN 2025

NE-2, 26 DEC 2024 to 23 JAN 2025

ELEV 21	D TDZE 21
---------	------------------

BENNG	3000	RAHEL	DNNIS	WARIN	GREKO
	044°	1800	1700	640	2000
GP 3.14°					
TCH 54					
	6 NM	1.1 NM	3.2 NM	1.7 NM	
CATEGORY	A	B	C	D	
LPV DA*	271/40		250 (300-3/4)		
LNAV/VNAV DA	499/50		478 (500-1)		
LNAV MDA	560/50	539 (600-1)	560/55	539 (600-1)	
C CIRCLING	680-1	659 (700-1)	700-2 679 (700-2)	760-2 1/4 739 (800-2 1/4)	



TDZ/CL Rws 4, 13 and 22
HIRL Rws 4-22 and 13-31
REIL Rwy 31