

TNNIS SIX DEPARTURE (RNAV)  
(TNNIS6, TNNIS) 25JUN15

D-ATIS 127.05  
CLNC DEL  
135.2  
CPDLC  
GND CON  
121.7 263.0  
LAGUARDIA TOWER  
118.7 263.0  
NEW YORK DEP CON  
120.4 263.0

**TOP ALTITUDE:  
5000**

(TNNIS6, TNNIS) 22335  
TNNIS SIX DEPARTURE (RNAV)

A1-289 (FAA)

LAGUARDIA (LGA)  
NEW YORK, NEW YORK



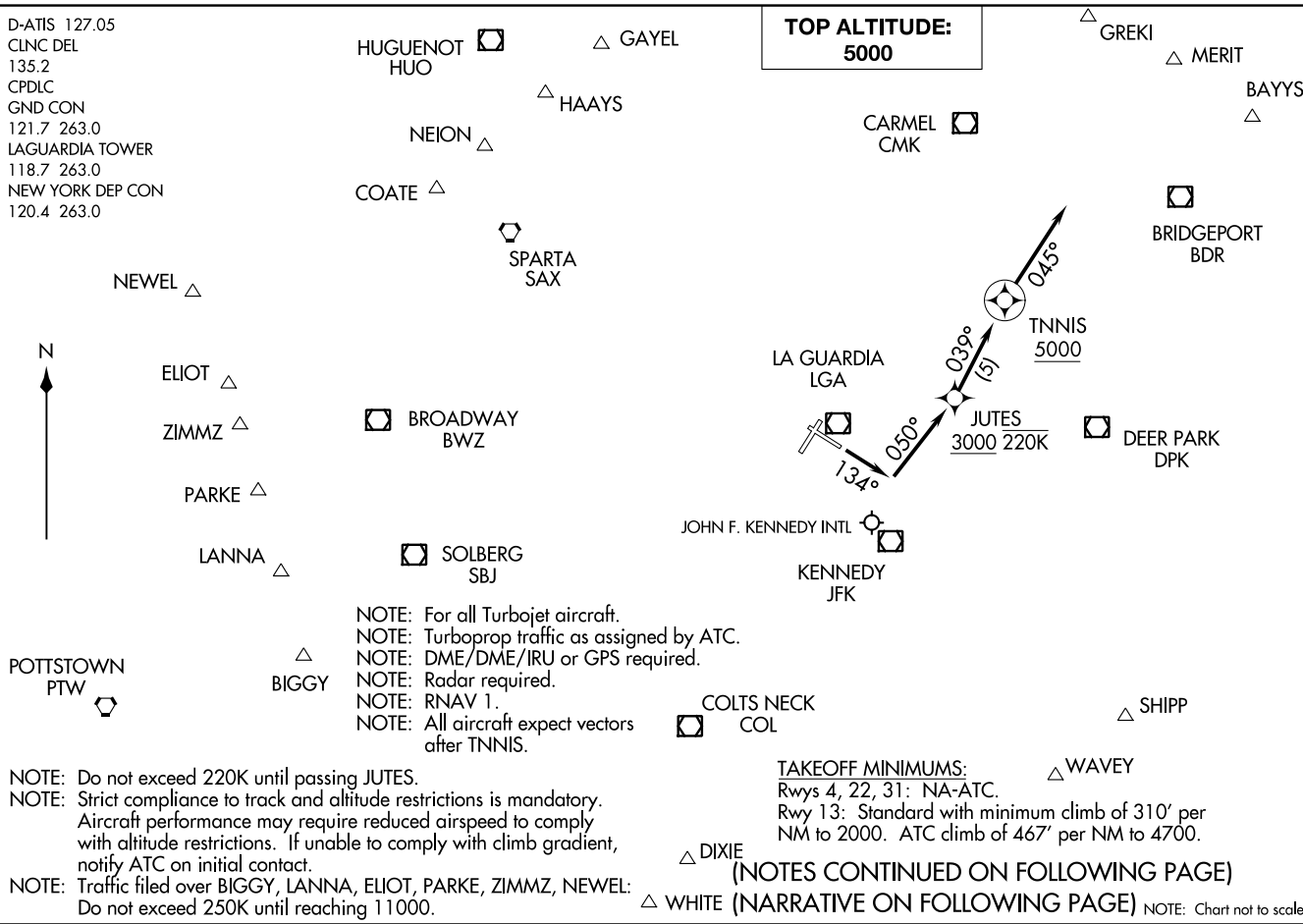
- NOTE: For all Turbojet aircraft.
- NOTE: Turboprop traffic as assigned by ATC.
- NOTE: DME/DME/IRU or GPS required.
- NOTE: Radar required.
- NOTE: RNAV 1.
- NOTE: All aircraft expect vectors after TNNIS.

- NOTE: Do not exceed 220K until passing JUTES.
- NOTE: Strict compliance to track and altitude restrictions is mandatory. Aircraft performance may require reduced airspeed to comply with altitude restrictions. If unable to comply with climb gradient, notify ATC on initial contact.
- NOTE: Traffic filed over BIGGY, LANNA, ELIOT, PARKE, ZIMMZ, NEWEL: Do not exceed 250K until reaching 11000.

**TAKEOFF MINIMUMS:**  
Rwys 4, 22, 31: NA-ATC.  
Rwy 13: Standard with minimum climb of 310' per NM to 2000. ATC climb of 467' per NM to 4700.

(NOTES CONTINUED ON FOLLOWING PAGE)

△ WHITE (NARRATIVE ON FOLLOWING PAGE) NOTE: Chart not to scale.



NEW YORK, NEW YORK  
LAGUARDIA (LGA)

# TNNIS SIX DEPARTURE (RNAV)



## DEPARTURE ROUTE DESCRIPTION

TAKEOFF RWY 13: Climb heading 134° to intercept course 050° to cross JUTES at or above 3000, then on track 039° to cross TNNIS at or above 5000, then on heading 045°, expect vectors after TNNIS, thence....

....maintain 5000 or as assigned by ATC. Expect clearance to filed altitude/flight level within ten (10) minutes after departure.

- NOTE: BAYYS departures expect vectors to BDR/BDR R-054.
- NOTE: COATE departures expect vectors to SAX/SAX R-311.
- NOTE: SHIPP departures expect vectors to JFK/JFK R-139.
- NOTE: WAVEY departures expect vectors to JFK/JFK R-156.
- NOTE: WHITE departures expect vectors to COL/COL R-204.
- NOTE: BIGGY departures expect vectors to SBJ/SBJ R-237.
- NOTE: DIXIE departures expect vectors to COL/COL R-192.
- NOTE: ELIOT departures expect vectors to SAX R-252. ELIOT authorized only for aircraft requesting a final altitude of 14000 or 16000.
- NOTE: GAYEL departures expect vectors to DPK R-320.
- NOTE: GREKI departures expect vectors to CMK R-057.
- NOTE: LANNA departures expect vectors to PTW R-059.
- NOTE: MERIT departures expect vectors to LGA R-055.
- NOTE: NEION departures expect vectors to LGA R-322.
- NOTE: PARKE departures expect vectors to BWZ/BWZ R-250.
- NOTE: HAAYS departures expect vectors to HUU.
- NOTE: ZIMMZ departures expect vectors to SAX R-250. ZIMMZ authorized only for aircraft requesting a final altitude of FL180 and above.
- NOTE: NEWEL departures expect vectors to SAX R-264. NEWEL authorized only for aircraft requesting a final altitude of at or above FL180.

NE-2, 26 DEC 2024 to 23 JAN 2025

NE-2, 26 DEC 2024 to 23 JAN 2025