

# HI-TACAN Y RWY 28

TACAN NGU Chan <b>86Y</b>	APCH CRS <b>290°</b>	Rwy ldg TDZE Arprt Elev	<b>7375</b> <b>14</b> <b>15</b>
------------------------------	-------------------------	-------------------------------	---------------------------------------

[USN]

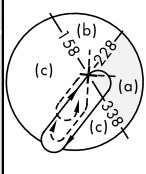
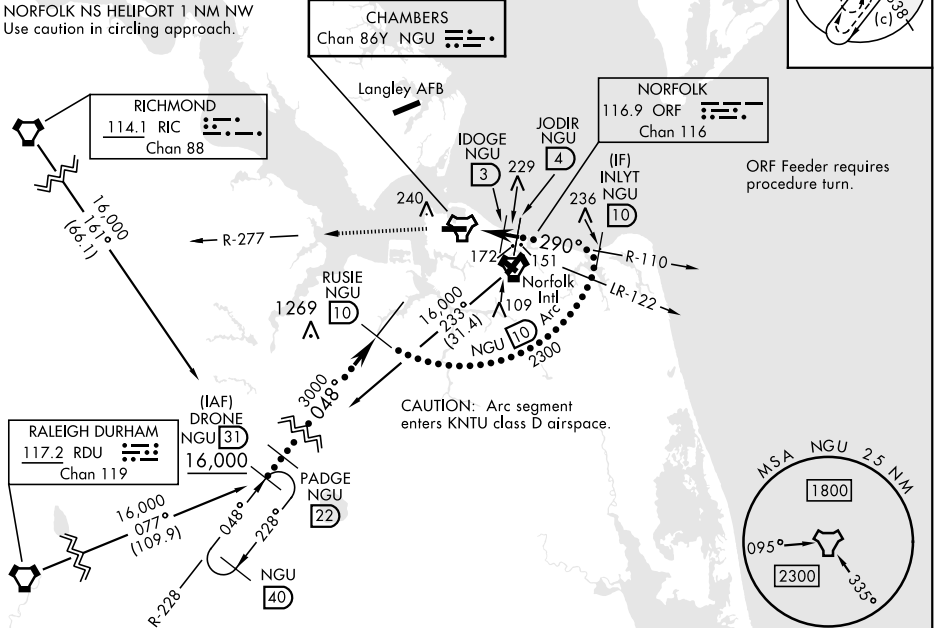
NORFOLK NS (CHAMBERS FLD) (KNGU)

RADAR required * When ALS inop, increase CAT CDE vis to 1 3/8 miles. ** Circling not authorized S of Rwy 10-28.	SSALF 	MISSED APPROACH: Climb to 2300 on NGU TACAN R-277 then as directed by ATC.
---	-----------	---

ATIS <b>118.425 338.225</b>	APP CON <b>118.9 273.475</b>	CHAMBERS TOWER <b>124.3 379.15</b>	GND CON <b>121.8 370.85</b>	ASR/PAR
--------------------------------	---------------------------------	---------------------------------------	--------------------------------	---------

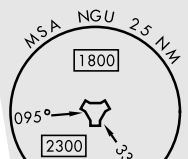
**CAUTION:**  
Do not mistake Norfolk Intl 5 NM SE for Chambers Fld. Chambers Fld has a single rwy, Norfolk Intl has int runways.

NORFOLK NS HELIPORT 1 NM NW  
Use caution in circling approach.



ORF Feeder requires procedure turn.

CAUTION: Arc segment enters KNTU class D airspace.



EMERG SAFE ALT 100 NM 4100

2300 ↑ NGU R-277	NGU TACAN	KLUMM NGU 0.5	NGU 1.3	IDOGE NGU 3	JODIR NGU 4	INLYT NGU 10	RUSIE NGU 10	PADGE NGU 22	DRONE NGU 31
0.5 NM	2.5 NM	1 NM							
CATEGORY	C	D	E						
S-28 *	460-1	446	(500-1)						
CIRCLING **	540-1 1/2 525 (600-1 1/2)	580-2	565 (600-2)						

ELEV 15	TDZE 14
Rwy 10 ldg 8071' Rwy 28 ldg 7375'	
HIRL Rwy 10-28 REIL Rwy 10-28 TDZL/CL Rwy 10-28	

# HI-TACAN Y RWY 28

NE-3, 26 DEC 2024 to 23 JAN 2025

NE-3, 26 DEC 2024 to 23 JAN 2025