

NORFOLK, VIRGINIA

ILS or LOC/DME RWY 10

LOC I-NGU 108.95	APCH CRS 101°	Rwy ldg 8071' TDZE 14 Arprt Elev 15
----------------------------	-------------------------	--

[USN]

NORFOLK NS (CHAMBERS FLD) (KNGU)

TACAN required

▼ * When ALS inop, increase vis to ¾ mile.
 ** When ALS inop, increase CAT AB vis to 1 mile, CAT CDE vis to 1 ¼ miles.
 *** Circling not authorized S of Rwy 10-28.



MISSED APPROACH: Climbing left turn to 2100 via NGU TACAN R-053 to RUVNE and hold.

ATIS 118.425 338.225	APP CON 118.9 273.475	CHAMBERS TOWER 124.3 379.15	GND CON 121.8 370.85	CLNC DEL 120.7 339.8	ASR/PAR
--------------------------------	---------------------------------	---------------------------------------	--------------------------------	--------------------------------	---------

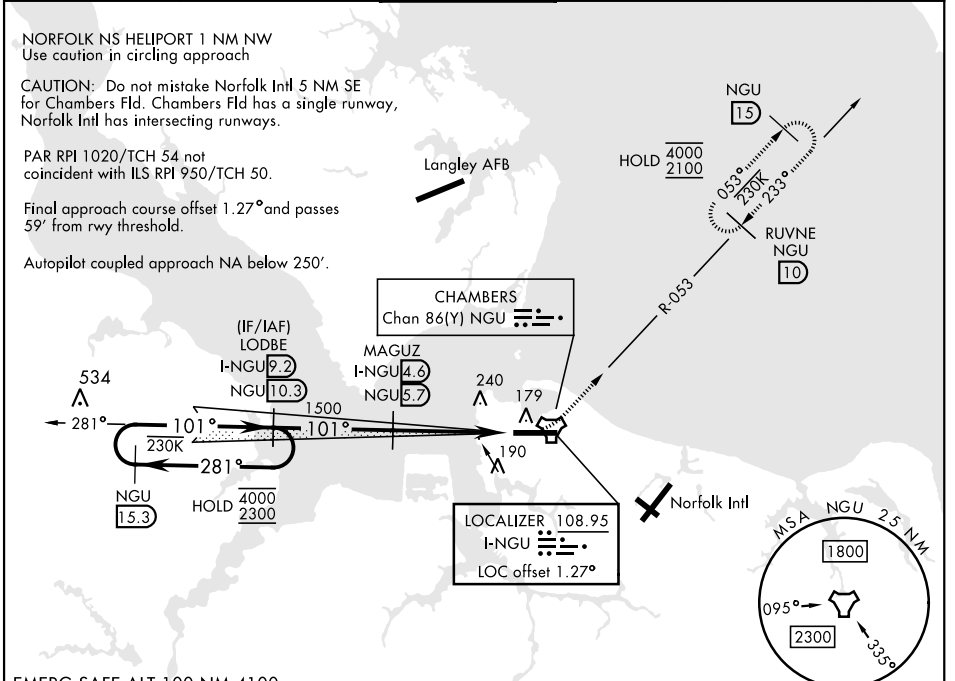
NORFOLK NS HELIPORT 1 NM NW
 Use caution in circling approach

CAUTION: Do not mistake Norfolk Intl 5 NM SE for Chambers Fld. Chambers Fld has a single runway, Norfolk Intl has intersecting runways.

PAR RPI 1020/TCH 54 not coincident with ILS RPI 950/TCH 50.

Final approach course offset 1.27° and passes 59' from rwy threshold.

Autopilot coupled approach NA below 250'.



NE-3, 26 DEC 2024 to 23 JAN 2025

NE-3, 26 DEC 2024 to 23 JAN 2025

EMERG SAFE ALT 100 NM 4100

VGSi and ILS glidepath not coincident (VGSi Angle 3.00/TCH 35).					ELEV 15	TDZE 14
					Rwy 10 ldg 8071' Rwy 28 ldg 7375'	
CATEGORY	A	B	C	D	E	
S-ILS 10 *	264-½		250	(300-½)		
S-LOC 10 **	440-½	426 (500-½)	440-¾	426 (500-¾)		
CIRCLING ***	480-1 465 (500-1)	540-1 525 (600-1)	540-1½ 525 (600-1½)	580-2	565 (600-2)	
					HIRL Rwy 10-28 REIL Rwy 10-28 TDZL/CL Rwy 10-28	

NORFOLK, VIRGINIA

36° 56' N-76° 17' W

NORFOLK NS (CHAMBERS FLD) (KNGU)

Amtd 2 22FEB24

ILS or LOC/DME RWY 10