

TACAN Z RWY 28

TACAN NGU Chan 86Y	APCH CRS 290°	Rwy ldg 7375 TDZE 14 Arprt Elev 15
------------------------------	-------------------------	---

[USN]

NORFOLK NS (CHAMBERS FLD) (KNGU)

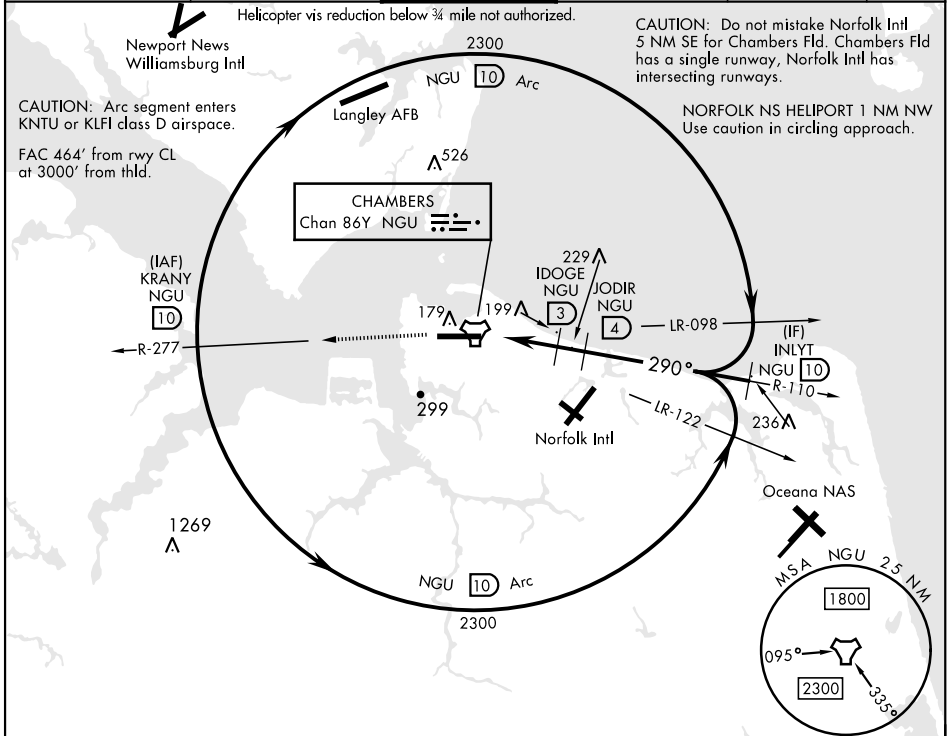
RADAR required

▼ * When ALS inop, increase CAT AB vis to 1 mile, CAT CD vis to 1 3/8 miles.
 ** Circling not authorized S of Rwy 10-28.



MISSED APPROACH: Climb to 2300 on NGU TACAN R-277 then as directed by ATC.

ATIS 118.425 338.225	APP CON 118.9 273.475	CHAMBERS TOWER 124.3 379.15	GND CON 121.8 370.85	CLNC DEL 120.7 339.8	ASR/PAR
--------------------------------	---------------------------------	---------------------------------------	--------------------------------	--------------------------------	---------



NE-3, 26 DEC 2024 to 23 JAN 2025

NE-3, 26 DEC 2024 to 23 JAN 2025

EMERG SAFE ALT 100 NM 4100

2300 ↑ NGU R-277	NGU TACAN	NGU 1.3	IDOGE NGU 3	JODIR NGU 4	INLYT NGU 10
	KLUMM NGU 0.5				
			980	1300	2300
			2.93°		
			TCH 36		
	0.5 NM	2.5 NM	1 NM		
CATEGORY	A	B	C	D	
S-28 *	460-3/4	446 (500-3/4)	460-1	446 (500-1)	
CIRCLING **	480-1 465 (500-1)	540-1 525 (600-1)	540-1 1/2 525 (600-1 1/2)	580-2 565 (600-2)	

ELEV 15	TDZE 14
---------	---------

Rwy 10 ldg 8071'
Rwy 28 ldg 7375'

NORFOLK NS Heliport

290°

8370 x 208

TWR

A4

HIRL Rwy 10-28
REIL Rwy 10-28
TDZL/CL Rwy 10-28

TACAN Z RWY 28