

ORF ATIS  
127.15  
NORFOLK APP CON  
118.9 353.7

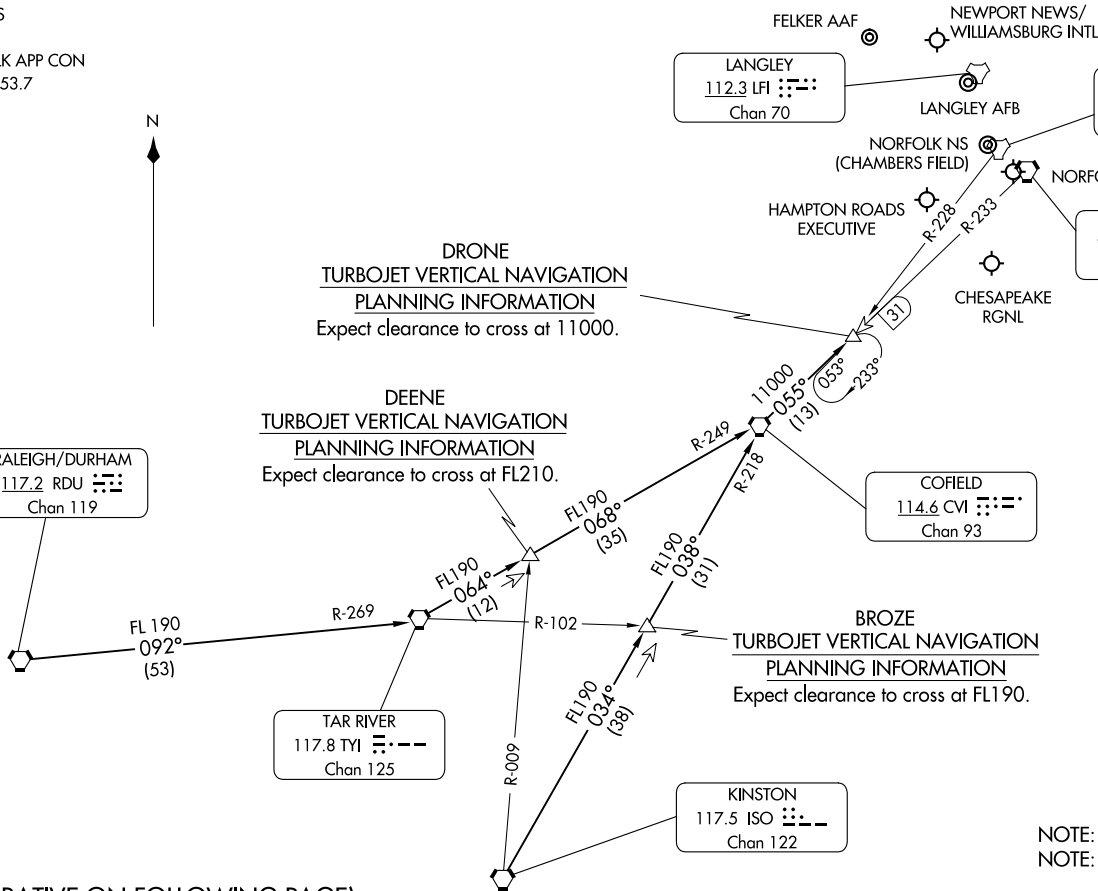


RALEIGH/DURHAM  
117.2 RDU  
Chan 119

DEENE  
TURBOJET VERTICAL NAVIGATION  
PLANNING INFORMATION  
Expect clearance to cross at FL210.

DRONE  
TURBOJET VERTICAL NAVIGATION  
PLANNING INFORMATION  
Expect clearance to cross at 11000.

BROZE  
TURBOJET VERTICAL NAVIGATION  
PLANNING INFORMATION  
Expect clearance to cross at FL190.



NOTE: RADAR required.  
NOTE: DME required.

NOTE: Chart not to scale.

(NARRATIVE ON FOLLOWING PAGE)

ARRIVAL DESCRIPTION

KINSTON TRANSITION (ISO.DRONE2): From over ISO VORTAC on ISO R-034 and CVI R-218 to CVI VORTAC, then on CVI R-055 to DRONE. Thence. . . .

RALEIGH/DURHAM TRANSITION (RDU.DRONE2): From over RDU VORTAC on RDU R-092 and TYI R-269 to TYI VORTAC, then on TYI R-064 and CVI R-249 to CVI VORTAC, then on CVI R-055 to DRONE. Thence. . . .

...from over DRONE expect radar vectors to final approach course.

NE-3, 26 DEC 2024 to 23 JAN 2025

NE-3, 26 DEC 2024 to 23 JAN 2025