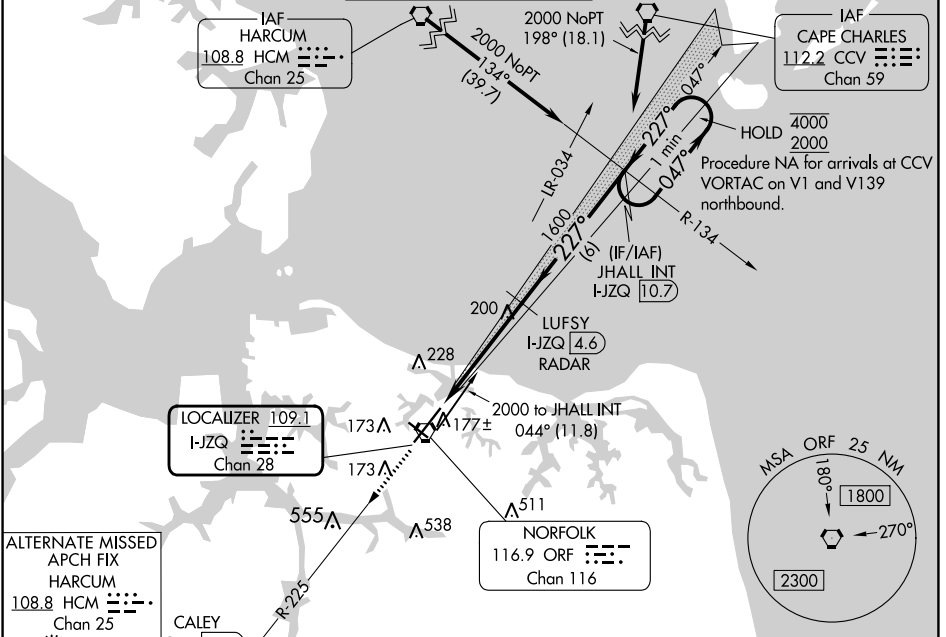


LOC/DME I-JZQ 109.1 Chan 28	APP CRS 227°	Rwy Idg TDZE Apt Elev 8995 26 27
--	------------------------	--

ILS or LOC RWY 23

NORFOLK INTL (ORF)

DME or RADAR required.		MALSR	MISSED APPROACH: Climb to 2000 on ORF VORTAC R-225 to CALEY/ORF 11.5 DME/RADAR and hold.	
ATIS 127.15	NORFOLK APP CON 118.9 353.7	NORFOLK TOWER 120.8 257.8	GND CON 121.9	CLNC DEL 118.5



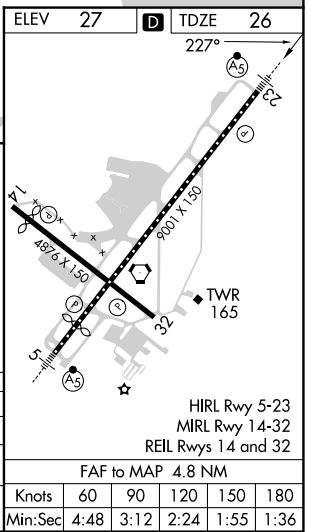
NE-3, 26 DEC 2024 to 23 JAN 2025

NE-3, 26 DEC 2024 to 23 JAN 2025

ALTERNATE MISSED APCH FIX HARCUM 108.8 HCM Chan 25



2000	ORF R-225	CALEY	JHALL INT I-JZQ 10.7	One Minute Holding Pattern
*LOC only.	I-JZQ DME ANTENNA I-JZQ 0.2	*I-JZQ 1.1	LUFYSY I-JZQ 4.6 RADAR	GS 3.00° TCH 55'
	1.2 NM	3.6 NM	6 NM	



CATEGORY	A	B	C	D
S-ILS 23		226-1/2	200 (200-1/2)	
S-LOC 23	460-1/2	434 (500-1/2)	460-3/4	434 (500-3/4)
CIRCLING	480-1 453 (500-1)	540-1 513 (600-1)	540-1 1/2 513 (600-1 1/2)	900-2 3/4 873 (900-2 3/4)

FAF to MAP 4.8 NM					
Knots	60	90	120	150	180
Min:Sec	4:48	3:12	2:24	1:55	1:36