

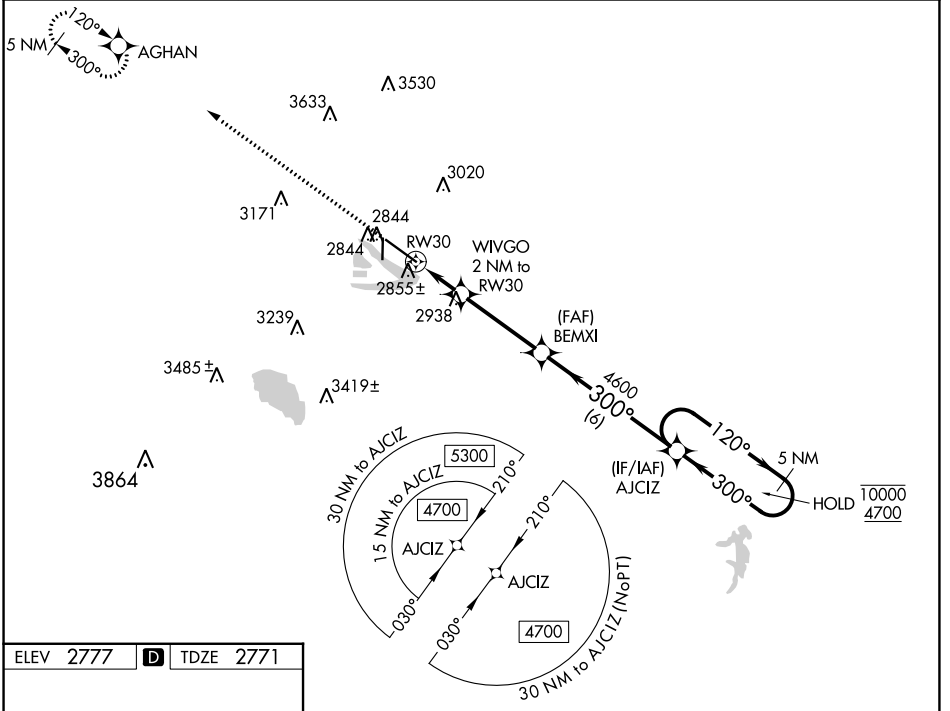
WAAS CH 60915 W30A	APP CRS 300°	Rwy Idg TDZE Apt Elev	8001 2771 2777
--	------------------------	-----------------------------	---

RNAV (GPS) RWY 30

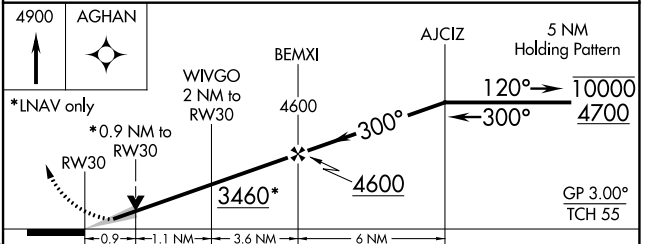
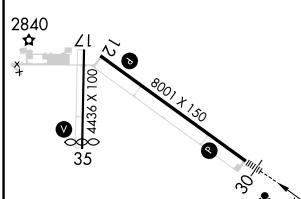
NORTH PLATTE RGNL/LEE BIRD FLD (L,B,F)

RNP APCH-GPS. ▼ ▲ For uncompensated Baro-VNAV systems, LNAV/VNAV NA below -23°C or above 52°C.	MALSR ▲	MISSED APPROACH: Climb to 4900 direct AGHAN and hold.
--	------------	---

ASOS 118.425	DENVER CENTER 132.7 226.675	CLNC DEL 132.7	UNICOM 123.0 (CTAF) 0
------------------------	---------------------------------------	--------------------------	---------------------------------



ELEV 2777	D	TDZE 2771
-----------	----------	-----------



CATEGORY	A	B	C	D
LPV DA		2971-½	200 (200-½)	
LNAV/VNAV DA		3022-½	251 (300-½)	
LNAV MDA	3120-½	349 (400-½)	3120-⅝	349 (400-⅝)
C CIRCLING	3280-1 503 (600-1)	3340-1 563 (600-1)	3420-1¾ 643 (700-1¾)	3560-2½ 783 (800-2½)

- HIRL Rwy 12-30
- REIL Rwy 35
- MIRL Rwy 17-35

NC-2, 26 DEC 2024 to 23 JAN 2025

NC-2, 26 DEC 2024 to 23 JAN 2025