

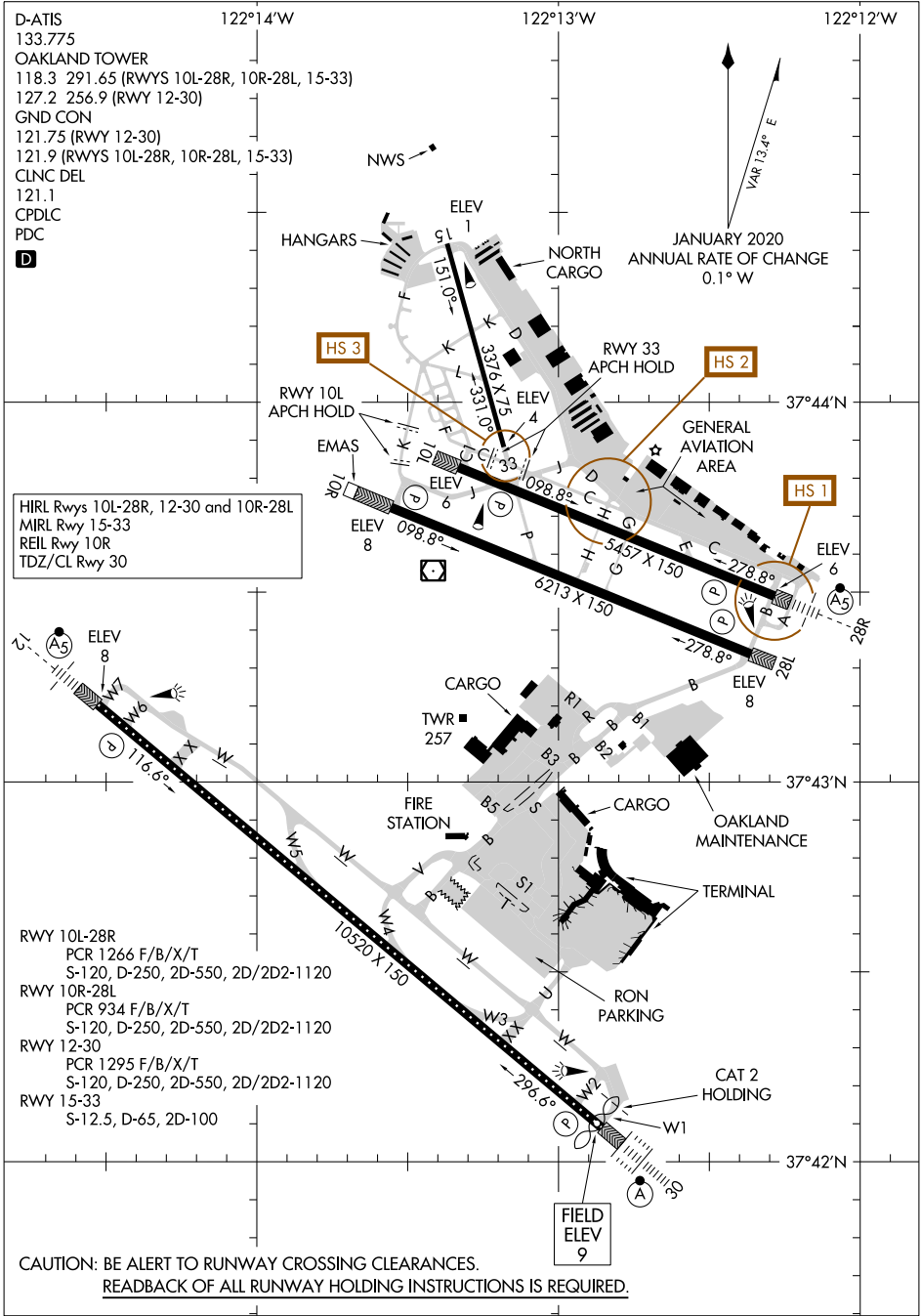
24305 **AIRPORT DIAGRAM** SAN FRANCISCO BAY OAKLAND INTL (O.A.K.)
 AL-294 (FAA) OAKLAND, CALIFORNIA

D-ATIS
 133.775
 OAKLAND TOWER
 118.3 291.65 (RWYS 10L-28R, 10R-28L, 15-33)
 127.2 256.9 (RWY 12-30)
 GND CON
 121.75 (RWY 12-30)
 121.9 (RWYS 10L-28R, 10R-28L, 15-33)
 CLNC DEL
 121.1
 CPDLC
 PDC
D

HIRL Rws 10L-28R, 12-30 and 10R-28L
 MIRL Rwy 15-33
 REIL Rwy 10R
 TDZ/CL Rwy 30

RWY 10L-28R
 PCR 1266 F/B/X/T
 S-120, D-250, 2D-550, 2D/2D2-1120
 RWY 10R-28L
 PCR 934 F/B/X/T
 S-120, D-250, 2D-550, 2D/2D2-1120
 RWY 12-30
 PCR 1295 F/B/X/T
 S-120, D-250, 2D-550, 2D/2D2-1120
 RWY 15-33
 S-12.5, D-65, 2D-100

CAUTION: BE ALERT TO RUNWAY CROSSING CLEARANCES.
 READBACK OF ALL RUNWAY HOLDING INSTRUCTIONS IS REQUIRED.



SW-2, 26 DEC 2024 to 23 JAN 2025

SW-2, 26 DEC 2024 to 23 JAN 2025

AIRPORT DIAGRAM OAKLAND, CALIFORNIA
 24305 SAN FRANCISCO BAY OAKLAND INTL (O.A.K.)