

BANND TWO ARRIVAL (RNAV) Transition Routes
SAIN FRANCISCO BAY OAKLAND INTL (OAK)
OAKLAND, CALIFORNIA
(BANND.BANND2) 24MAY18

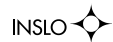
OAKLAND CENTER
134.37 281.5
NORCAL APP CON
124.8 263.15
D-ATIS
133.775
OAKLAND TOWER
127.2 256.9 (Rwy 12)
GND CON
121.75 (Rwy 12)

MRLET TRANSITION (MRLET.BANND2)
RPARK TRANSITION (RPARK.BANND2)
RUSME TRANSITION (RUSME.BANND2)

(BANND.BANND2) 24Z29
AL-294 (FAA) SAN FRANCISCO BAY OAKLAND INTL (OAK)
OAKLAND, CALIFORNIA
BANND TWO ARRIVAL (RNAV) Transition Routes



NOTE: RADAR required.
NOTE: RNAV 1.
NOTE: DME/DME/IRU or GPS required.



7000
*1500
244°
(10)

BANND
FL180 270K

See following page
for Arrival Routes.

GRUDG
FL200

11000
*5300
244°
(25)

OAKES
FL320 280K
FL240

16000
*9400
195°
(28)

16000
*11400
245°
(31)

MOLLA

FL200
246°
(47)

RPARK

FL200
179°
(52)

POYSN

MRLET

FL200
267°
(137)

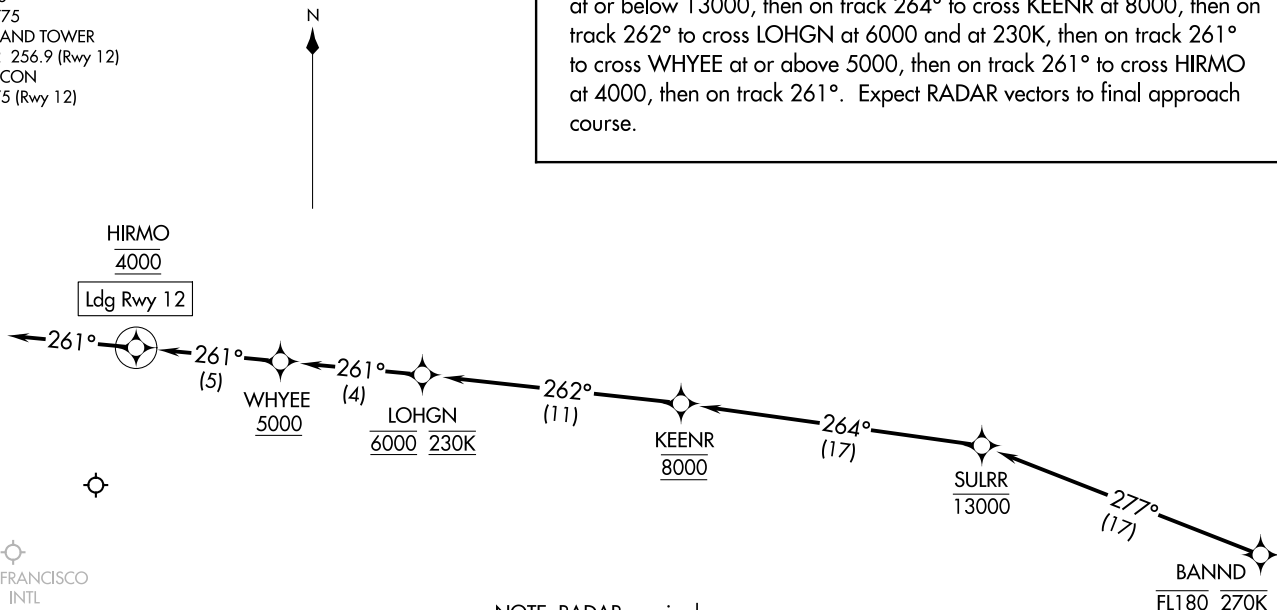
RUSME

(CONTINUED ON FOLLOWING PAGE)

NOTE: Chart not to scale.

ARRIVAL ROUTE DESCRIPTION

LANDING RUNWAY 12: From BANND on track 277° to cross SULRR at or below 13000, then on track 264° to cross KEENR at 8000, then on track 262° to cross LOHGN at 6000 and at 230K, then on track 261° to cross WHYEE at or above 5000, then on track 261° to cross HIRMO at 4000, then on track 261°. Expect RADAR vectors to final approach course.



NOTE: RADAR required.
NOTE: RNAV 1.
NOTE: DME/DME/IRU or GPS required.

OAKLAND CENTER
134.37 281.5
NORCAL APP CON
124.8 263.15
D-ATIS
133.775
OAKLAND TOWER
127.2 256.9 (Rwy 12)
GND CON
121.75 (Rwy 12)

NOTE: Chart not to scale.