

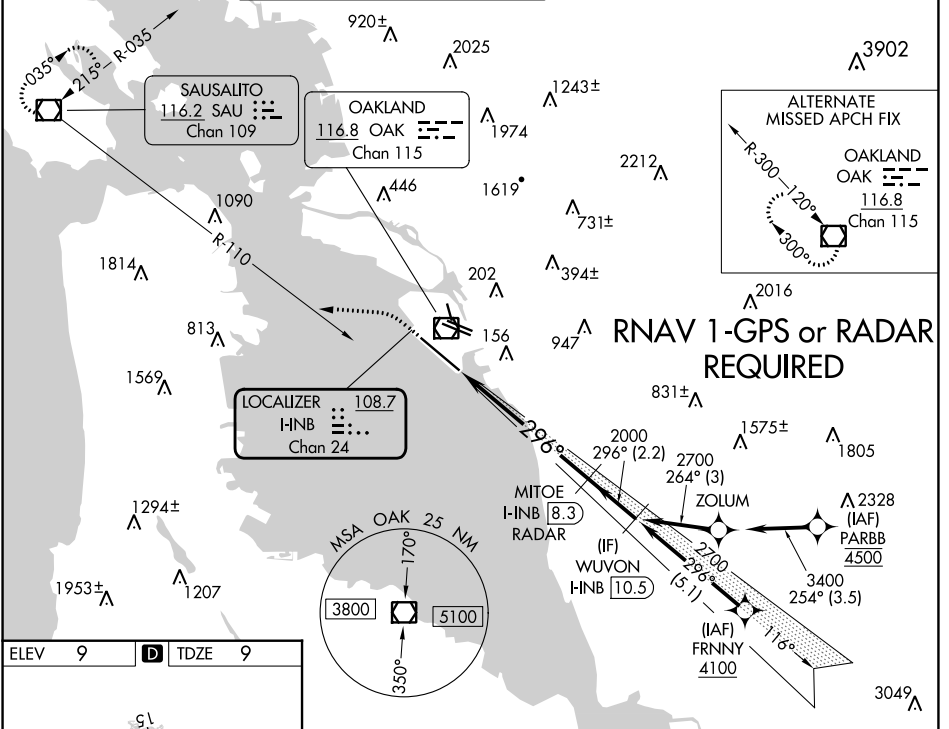
LOC/DME I-INB <b>108.7</b> Chan 24	APP CRS <b>296°</b>	Rwy Idg TDZE Apt Elev	<b>10000</b> <b>9</b> <b>9</b>
--	------------------------	-----------------------------	--------------------------------------

# ILS or LOC RWY 30

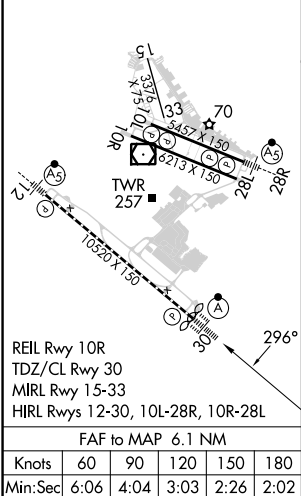
SAN FRANCISCO BAY OAKLAND INTL (OAK)

DME or RADAR required.		ALSIF-2	MISSED APPROACH: Climb to 600 then climbing left turn to 4000 on heading 260° and on SAU VOR/DME R-110 to SAU VOR/DME and hold, continue climb-in-hold to 4000.	
------------------------	--	---------	---	--

D-ATIS <b>133.775</b>	NORCAL APP CON <b>125.35 263.15</b>	OAKLAND TOWER <b>118.3 291.65</b> (Rwys 10L/R-28L/R, 15-33) <b>127.2 256.9</b> (Rwy 12-30)	GND CON <b>121.9</b> (Rwys 10L/R-28L/R, 15-33) <b>121.75</b> (Rwy 12-30)	CLNC DEL <b>121.1</b>	CPDLC
--------------------------	--	--	--	--------------------------	-------



ELEV 9	<b>D</b> TDZE 9
--------	-----------------



600	4000	SAU R-110	SAU	VGSI and ILS glidepath not coincident (VGSI Angle 3.00°/TCH 71).	WUVON I-INB 10.5
	hdg 260°				

\*LOC only

HNB 2.2 \*HNB 3.5 2000 296° 2700 GS 3.00° TCH 55

CATEGORY	A	B	C	D
S-ILS 30	209/18 200 (200-½)			
S-LOC 30	500/24	491 (500-½)	500/50	491 (500-1)
<b>C</b> CIRCLING	560-1	551 (600-1)	660-1¾ 651 (700-1¾)	1400-3 1391 (1400-3)

SW-2, 26 DEC 2024 to 23 JAN 2025

SW-2, 26 DEC 2024 to 23 JAN 2025