

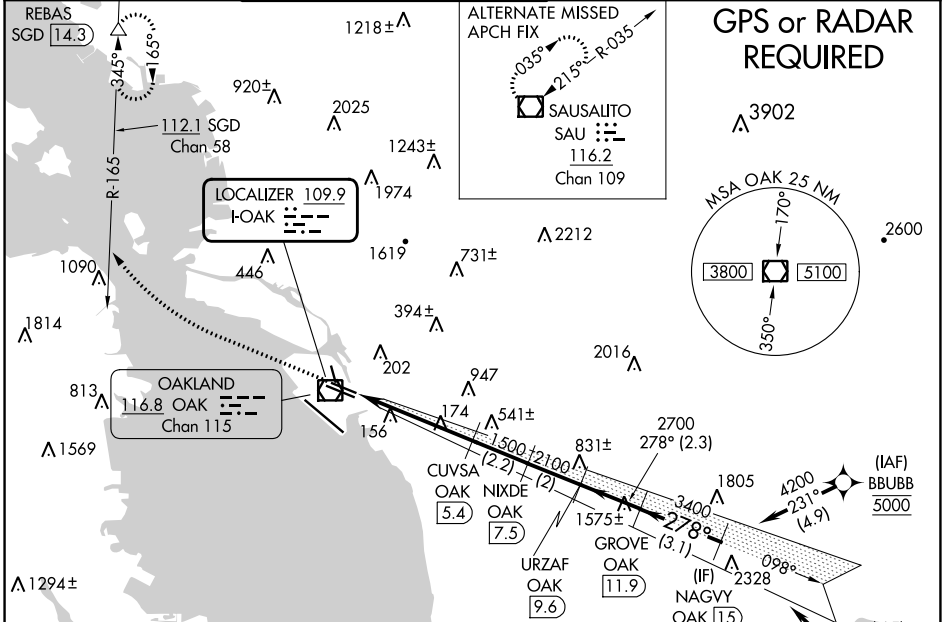
LOC I-OAK <b>109.9</b>	APP CRS <b>278°</b>	Rwy Idg 28R <b>5457</b>	28L <b>6213</b>
		TDZE <b>7</b>	<b>9</b>
		Apt Elev <b>9</b>	<b>9</b>

# ILS or LOC/DME RWY 28R

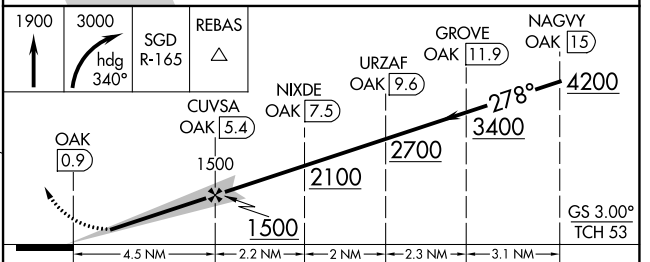
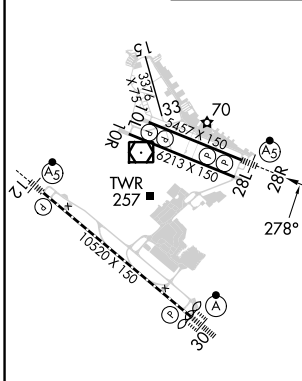
## SAN FRANCISCO BAY OAKLAND INTL (OAK)

DME required. DME from OAK VOR/DME. Simultaneous reception of I-OAK and OAK DME required. *RVR 1800 authorized with use of FD or AP or HUD to DA.	MALSR Rwy 28R 	MISSED APPROACH: Climb to 1900 then climbing right turn to 3000 on heading 340° and SGD VORTAC R-165 to REBAS/SGD 14.3 DME and hold.	

D-ATIS <b>133.775</b>	NORCAL APP CON <b>125.35 263.15</b>	OAKLAND TOWER <b>118.3 291.65</b> (Rwys 10L/R-28L/R, 15-33) <b>127.2 256.9</b> (Rwy 12-30)		GND CON <b>121.9</b> (Rwys 10L/R-28L/R, 15-33) <b>121.75</b> (Rwy 12-30)	CLNC DEL <b>121.1</b>	CPDLC
--------------------------	--	--	--	--	--------------------------	-------



ELEV 9	<b>D</b>	TDZE 28R 7	TDZE 28L 9
--------	----------	------------	------------



CATEGORY	A	B	C	D
*S-ILS 28R	207/24 200 (200-½)			
S-LOC 28R	440/24 433 (500-½)			
SIDESTEP 28L	440/55	431 (500-1)	440-1½	431 (500-1½)
CIRCLING	560-1	551 (600-1)	660-1¾ 651 (700-1¾)	1400-3 1391 (1400-3)

REIL Rwy 10R  
 TDZ/CL Rwy 30  
 MIRL Rwy 15-33  
 HIRL Rwys 12-30, 10L-28R, 10R-28L

SW-2, 26 DEC 2024 to 23 JAN 2025

SW-2, 26 DEC 2024 to 23 JAN 2025