

(KATFH3.KATFH) 24249

# KATFH THREE DEPARTURE(RNAV)

SAN FRANCISCO BAY OAKLAND INTL (OAK)  
AL-294 (FAA) OAKLAND, CALIFORNIA

D-ATIS 133.775  
CLNC DEL  
121.1  
CPDLC  
GND CON  
121.9 (Rwys 10L/R, 28L/28R, 15/33)  
121.75 (Rwy 12/30)  
OAKLAND TOWER  
118.3 291.65 (Rwys 10L/R, 28L/28R, 15/33)  
127.2 256.9 (Rwy 12/30)  
NORCAL DEP CON  
135.1 307.2

**TOP ALTITUDE:  
ASSIGNED BY ATC**



## DEPARTURE ROUTE DESCRIPTION

**TAKEOFF RUNWAYS 10L, 10R:** Climb on heading 098° to 520, then right turn direct to cross ROWLY at or below 3000, then on track 150° to cross VYYDA at or below 4000, then on track 150° to cross KATFH at or above 6000. Thence. . . .

**TAKEOFF RUNWAY 12:** Climb on heading 116° to 520, then direct to cross ROWLY at or below 3000, then on track 150° to cross VYYDA at or below 4000, then on track 150° to cross KATFH at or above 6000. Thence. . . .

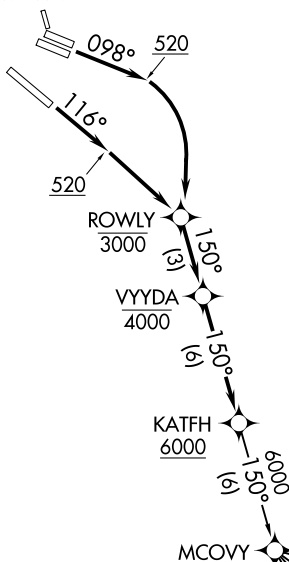
. . . .on (transition). Maintain ATC assigned altitude, expect filed altitude 10 minutes after departure.

KAYEX TRANSITION (KATFH3.KAYEX)

KTINA TRANSITION (KATFH3.KTINA)

NTELL TRANSITION (KATFH3.NTELL)

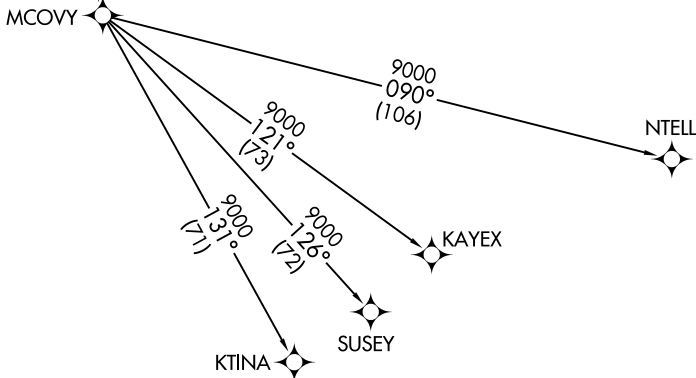
SUSEY TRANSITION (KATFH3.SUSEY)



### TAKEOFF MINIMUMS

Rwys 15, 28L/R, 30, 33: NA-ATC.

Rwys 10L/R, 12: Standard with minimum climb of 500' per NM to 520.



NOTE: RNAV 1.

NOTE: DME/DME/IRU or GPS required.

NOTE: RADAR required for non-GPS equipped aircraft.



EBAYE



CISKO



LOSHN

NOTE: Chart not to scale.

# KATFH THREE DEPARTURE(RNAV)

(KATFH3.KATFH) 12AUG21

OAKLAND, CALIFORNIA  
SAN FRANCISCO BAY OAKLAND INTL (OAK)

SW-2, 26 DEC 2024 to 23 JAN 2025

SW-2, 26 DEC 2024 to 23 JAN 2025