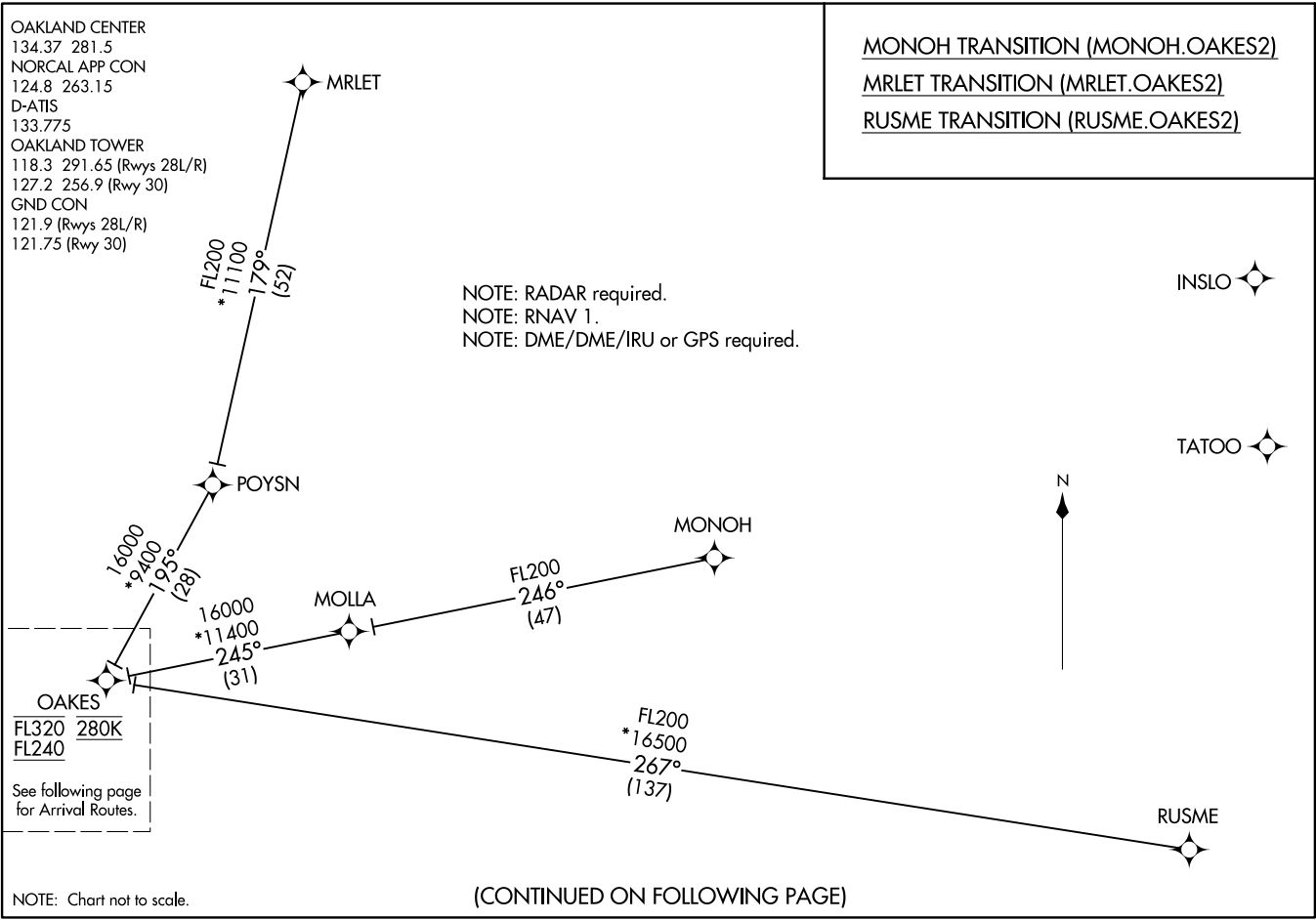


OAKES TWO ARRIVAL (RNAV) Transition Routes
(OAKES, OAKES2) 150CT15



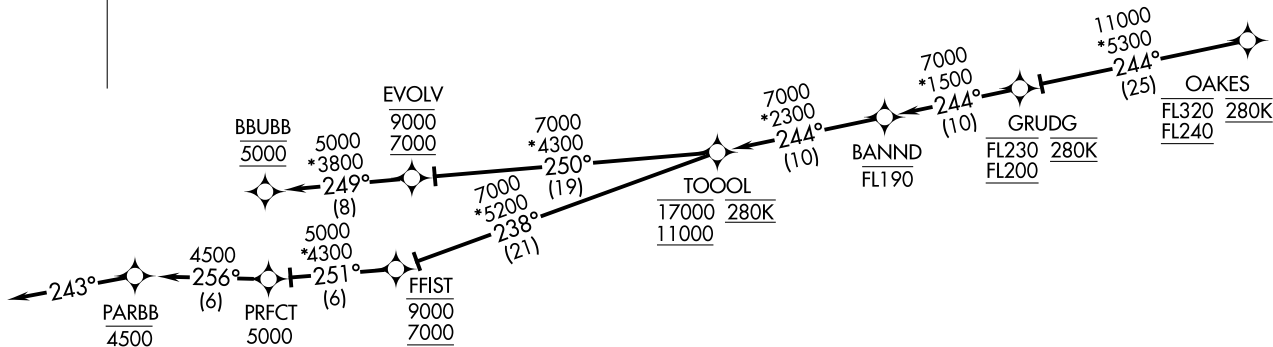
(OAKES, OAKES2) 24249
OAKES TWO ARRIVAL (RNAV) Transition Routes
SAN FRANCISCO BAY OAKLAND INTL (OAK)
OAKLAND, CALIFORNIA

ARRIVAL ROUTE DESCRIPTION

From OAKES on track 244° to cross GRUDG between FL200 and FL230 and at 280K, then on track 244° to cross BANND at or below FL190.

LANDING RUNWAYS 28L/R: From BANND on track 244° to cross TOOOOL between 11000 and 17000 and at 280K, then on track 250° to cross EVOLV between 7000 and 9000, then on track 249° to cross BBUBB at 5000. Expect assigned instrument approach procedure.

LANDING RUNWAY 30: From BANND on track 244° to cross TOOOOL between 11000 and 17000 and at 280K, then on track 238° to cross FFIST between 7000 and 9000, then on track 251° to cross PRFCT at or above 5000, then on track 256° to cross PARBB at 4500, then on track 243°. Expect assigned instrument approach procedure.



NOTE: RADAR required.
 NOTE: RNAV 1.
 NOTE: DME/DME/IRU or GPS required.

NOTE: Chart not to scale.

OAKES TWO ARRIVAL (RNAV) Arrival Routes
 (OAKES, OAKES2) 150CT15
 OAKLAND, CALIFORNIA
 SAN FRANCISCO BAY OAKLAND INTL (OAK)

(OAKES, OAKES2) 24249
 OAKES TWO ARRIVAL (RNAV) Arrival Routes
 AL-294 (FAA)
 SAN FRANCISCO BAY OAKLAND INTL (OAK)
 OAKLAND, CALIFORNIA