

(OAK6.OAK) 24249

OAKLAND SIX DEPARTURE

SAN FRANCISCO BAY OAKLAND INTL (OAK)

AL-294 (FAA)

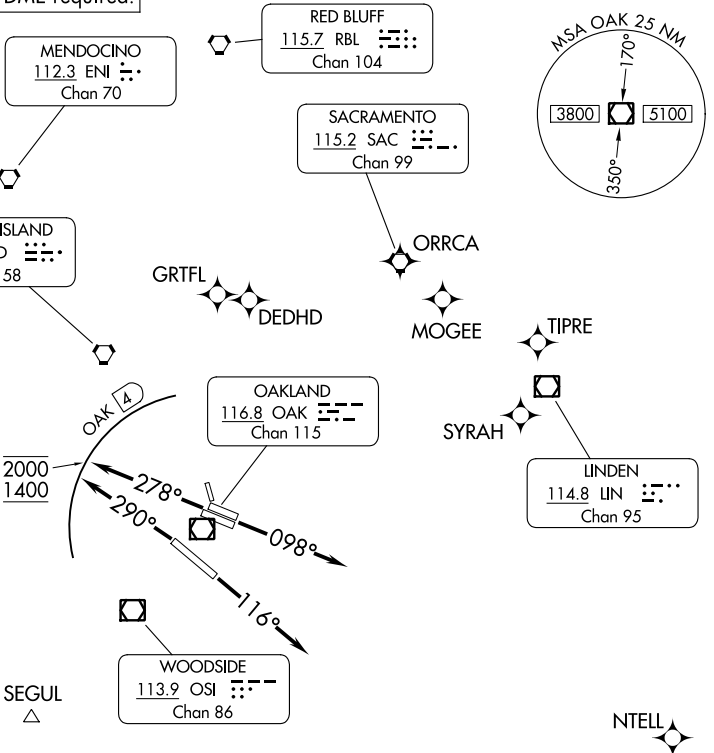
OAKLAND, CALIFORNIA

D-ATIS
133.775
CLNC DEL
121.1
CPDLC
NORCAL DEP CON
120.9 323.2

RNAV 1-GPS. From ALCOA, BEBOP, CINNY, CISKO, DEDHD, EBAYE, GRTFL, LOSHN, MOGEE, NTELL, ORRCA, SYRAH, or TIPRE.

RADAR and DME required.

**TOP ALTITUDE:
ASSIGNED BY ATC**



TAKEOFF MINIMUMS

Rwys 15, 33: NA- ATC.

Rwy 10L: Standard with minimum climb of 340'/NM to 2300.

Rwy 10R: Standard with minimum climb of 330'/NM to 2300.

Rwy 12: Standard with minimum climb of 270'/NM to 1400.

Rwys 28L/R, 30: Standard with minimum climb of 375'/NM to 2000.

NOTE: Use the SILENT, HUSSH, or SUNNE DEPARTURE during the periods of 2200-0700 local in lieu of the OAKLAND DEPARTURE.

(CONTINUED ON FOLLOWING PAGE)

NOTE: Chart not to scale.

OAKLAND SIX DEPARTURE

(OAK6.OAK) 25JAN24

OAKLAND, CALIFORNIA

SAN FRANCISCO BAY OAKLAND INTL (OAK)

SW-2, 26 DEC 2024 to 23 JAN 2025

SW-2, 26 DEC 2024 to 23 JAN 2025



DEPARTURE ROUTE DESCRIPTION

TAKEOFF RUNWAYS 10L/R: Climb on heading 098° for RADAR vectors to assigned route/fix, thence. . . .

TAKEOFF RUNWAY 12: Climb on heading 116° for RADAR vectors to assigned route/fix, thence. . . .

TAKEOFF RUNWAYS 28L/R: Climb on heading 278° for RADAR vectors to assigned route/fix. Cross 4 DME northwest of OAK VOR/DME at or above 1400 and at or below 2000, thence. . . .

TAKEOFF RUNWAY 30: Climb on heading 290° for RADAR vectors to assigned route/fix. Cross 4 DME northwest of OAK VOR/DME at or above 1400 and at or below 2000, thence. . . .

. . . .maintain ATC assigned altitude. Expect filed altitude ten minutes after departure.

LOST COMMUNICATIONS: If not in contact with departure control after reaching 5000', continue climb to assigned altitude and proceed direct to assigned route/fix.

SW-2, 26 DEC 2024 to 23 JAN 2025

SW-2, 26 DEC 2024 to 23 JAN 2025