


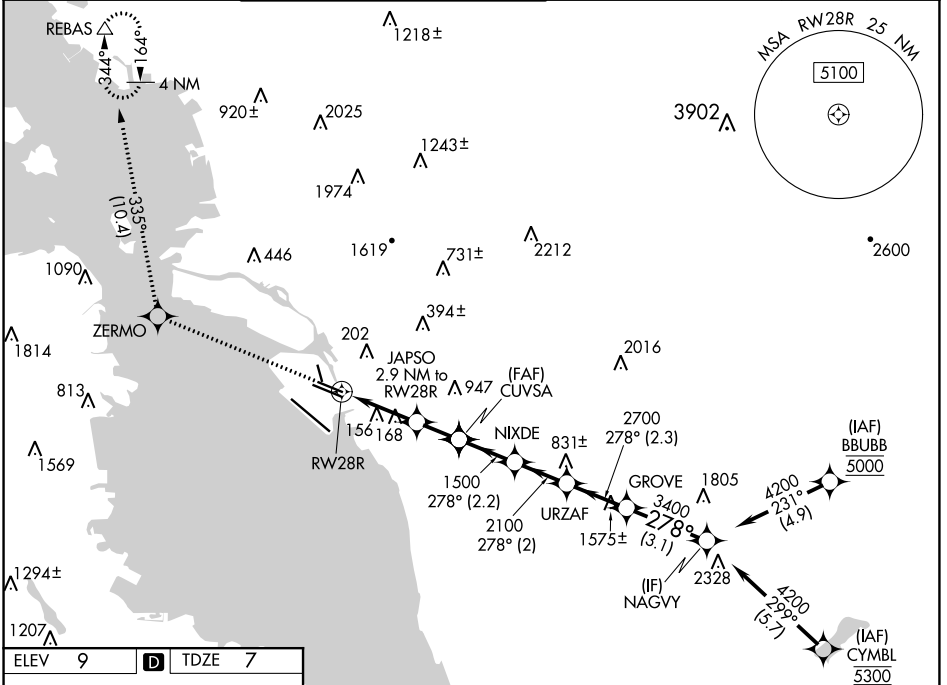
WAAS CH <b>42535</b> <b>W28B</b>	APP CRS <b>278°</b>	Rwy Idg TDZE Apt Elev	<b>5457</b> <b>7</b> <b>9</b>
--	------------------------	-----------------------------	-------------------------------------

# RNAV (GPS) Y RWY 28R

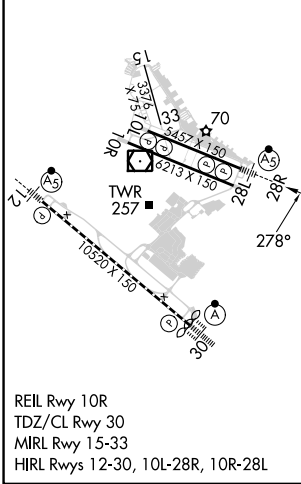
SAN FRANCISCO BAY OAKLAND INTL (OAK)

<p>▼ DME/DME RNP-0.3 NA. For uncompensated Baro-VNAV systems, LNAV/VNAV NA below 1°C (34°F) or above 54°C (130°F). #RVR 1800 authorized with use of FD or AP or HUD to DA.</p>	<p>MALSR</p> 	<p>MISSED APPROACH: Climb to 3000 direct ZERMO and on track 335° to REBAS and hold.</p>
--	--	---

D-ATIS <b>133.775</b>	NORCAL APP CON <b>125.35 263.15</b>	<p>OAKLAND TOWER</p> <p><b>118.3 291.65</b> (Rwys 10L/R-28L/R, 15-33) <b>127.2 256.9</b> (Rwy 12-30)</p>	<p>GND CON</p> <p><b>121.9</b> (Rwys 10L/R-28L/R, 15-33) <b>121.75</b> (Rwy 12-30)</p>	CLNC DEL <b>121.1</b>	CPDLC
--------------------------	--	--	--	--------------------------	-------



ELEV 9	<b>D</b>	TDZE 7
--------	----------	--------



3000	ZERMO	tr	335°	REBAS					
*LNAV only.									
	RWY28R	JAPSO	CUVSA	NIXDE	URZAF	GROVE	NAGVY		
	1.2 NM	2.9 NM to RWY28R	1500	2100	2700	3400	4200		
	1.7 NM	1.6 NM	2.2 NM	2.2 NM	2.3 NM	3.1 NM			
980*	1500	1500	2100	2700	3400	4200			
								GP 3.00°	TCH 53
CATEGORY	A		B		C		D		
LPV DA #			207/24		200 (200-½)				
LNAV/VNAV DA			387/40		380 (400-¾)				
LNAV MDA	440/24		433 (500-½)		440/40		433 (500-¾)		
CIRCLING	560-1		551 (600-1)		660-1¾ 651 (700-1¾)		1400-3 1391 (1400-3)		

SW-2, 26 DEC 2024 to 23 JAN 2025

SW-2, 26 DEC 2024 to 23 JAN 2025