

OGDEN, UTAH

HI-TACAN Z RWY 14

TACAN HIF Chan 49	APCH CRS 131°	Rwy ldg TDZE Arprt Elev	13,500 4786 4789
-------------------	---------------	-------------------------	------------------------

AL-296 (USAF)

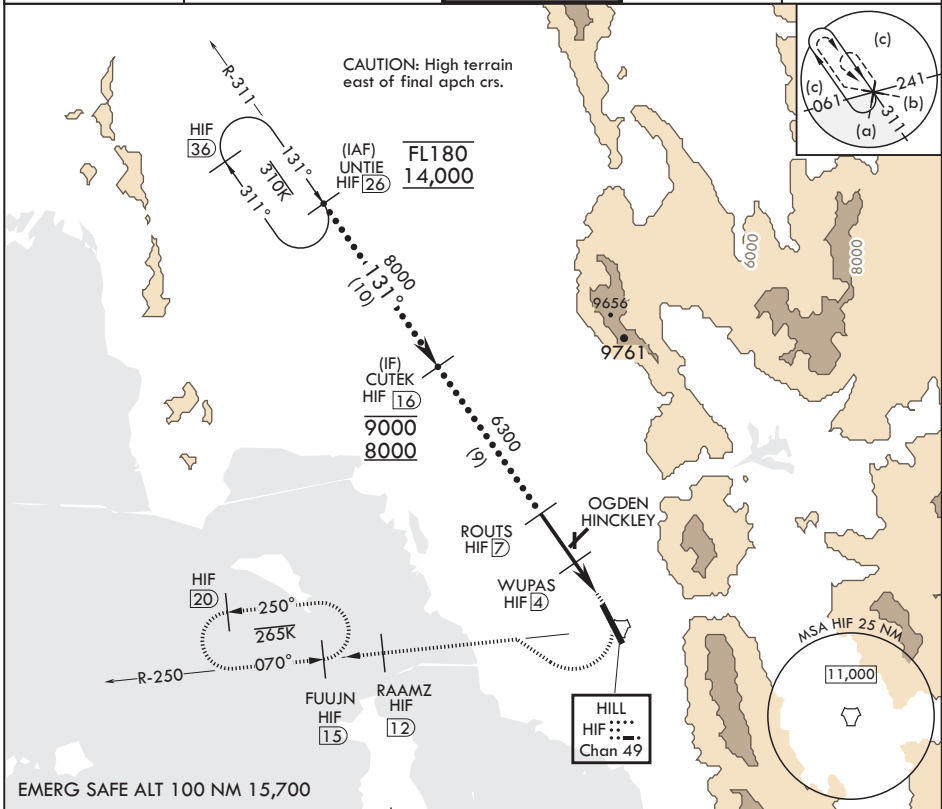
HILL AFB (KHIF)

V * When ALS inop, increase CAT CDE RVR to 55, vis to 1 mile.
 ** Circling not authorized in sector NE of Rwy 14-32.

ALSF-2

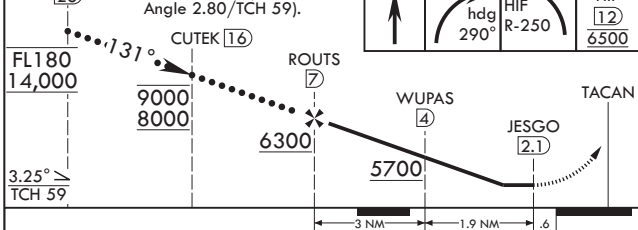
 MISSED APPROACH: Climb to 5300, then turn right heading 290°, remain within HIF TACAN 5.7 DME until established on 290° heading. Intercept the HIF R-250 outbound. Cross RAAMZ at 6500, then climb and maintain 7200 direct to FUJUN and hold.

ATIS 134.925 397.9	SALT LAKE CITY APP CON 121.1 319.25	TOWER 127.15 263.15	GND CON 121.6 275.8	CLNC DEL 124.1 335.8
-----------------------	--	------------------------	------------------------	-------------------------

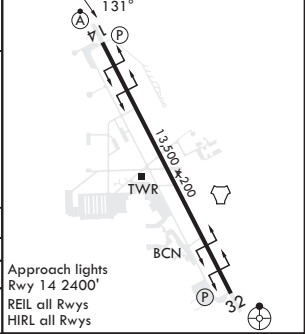


EMERG SAFE ALT 100 NM 15,700

UNTIE (HIF 26) VGS1 and descent angle not coincident (VGS1 Angle 2.80/TCH 59).
 CUTEK (HIF 16) ROUTS (HIF 7) WUPAS (HIF 4) TACAN (HIF 36)
 RAAMZ (HIF 12) ELEV 4789 TDZE 4786
 HILL (HIF 36) Chan 49



CATEGORY	C	D	E
S-14*	5160/40	374	(400-3/4)
C CIRCLING**	5340-2 551	(600-2)	5900-3 1111 (1200-3)



OGDEN, UTAH 41°07'N - 111°58'W HILL AFB (KHIF)

Amdt 9 05OCT23

HI-TACAN Z RWY 14

SW-4, 26 DEC 2024 to 23 JAN 2025

SW-4, 26 DEC 2024 to 23 JAN 2025