

# ILS or LOC X RWY 14

LOC I-HIF <b>109.9</b>	APCH CRS <b>139°</b>	Rwy Idg <b>13,500</b> TDZE <b>4786</b> Arprt Elev <b>4789</b>
---------------------------	-------------------------	---

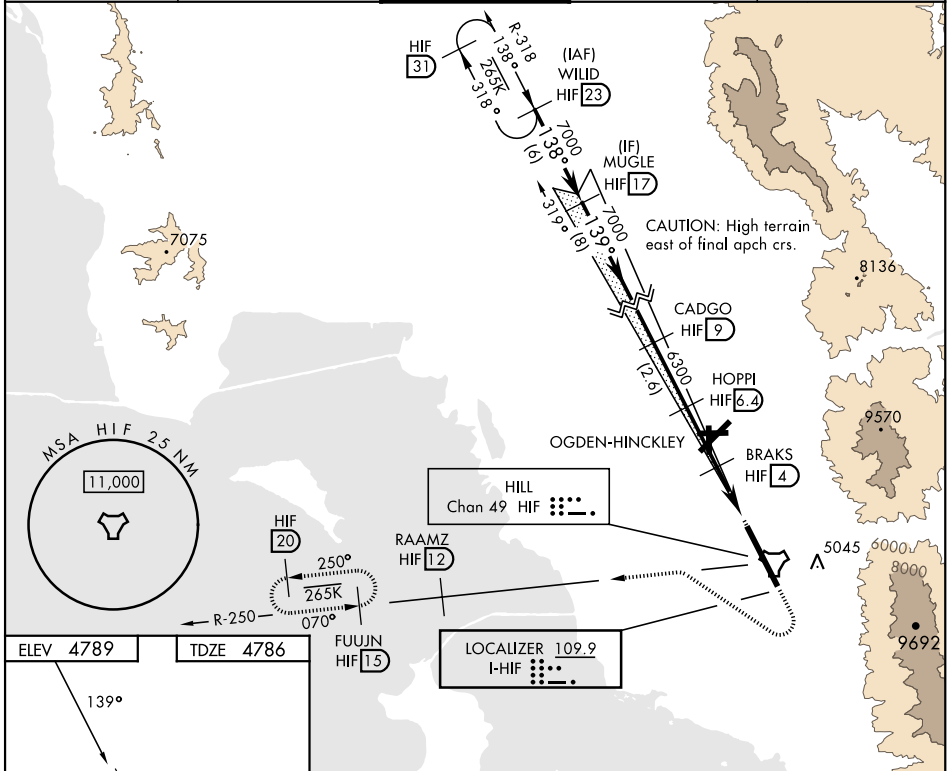
AL-296 [USAF]

HILL AFB (KHIF)

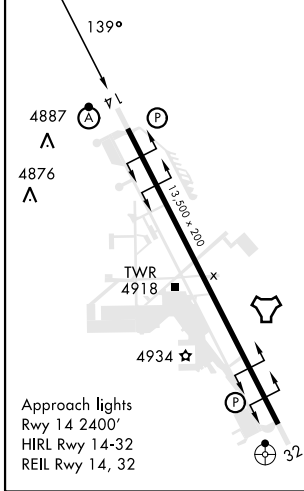
RADAR or DME required for LOC.  
 ▼ \* When ALS inop, increase RVR to 40 and vis to 3/4 mile.  
 \*\* When ALS inop, increase RVR to 55 and vis to 1 mile.  
 \*\*\* Circling not authorized in sector NE of Rwy 14-32.

ALSf-2  
 MISSED APPROACH: Climb to 5300, then turn right heading 290°, remain within HIF TACAN 5.7 DME until established on 290° heading. Intercept the HIF R-250 outbound. Cross RAAMZ at 6500, then climb and maintain 7200 direct to FUJUN and hold.

ATIS <b>134.925 397.9</b>	SALT LAKE CITY APP CON <b>121.1 319.25</b>	TOWER <b>127.15 263.15</b>	GND CON <b>121.6 275.8</b>	CLNC DEL <b>124.1 335.8</b>
------------------------------	---	-------------------------------	-------------------------------	--------------------------------

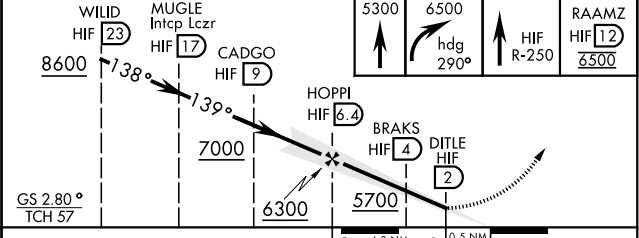


ELEV 4789	TDZE 4786
-----------	-----------



OGDEN, UTAH  
 Amdt 9 05OCT23

EMERG SAFE ALT 100 NM 15,700



CATEGORY	A	B	C	D	E
S-ILS 14 *		4986/24	200	(200-1/2)	
S-LOC 14 **		5080/24	294	(300-1/2)	
<b>CIRCLING</b> ***	5280-1 491 (500-1)	5280-1 1/2 491 (500-1 1/2)	5340-2 551 (600-2)	5900-3 1111 (1200-3)	

41°07'N-111°58'W

HILL AFB (KHIF)

# ILS or LOC X RWY 14

SW-4, 26 DEC 2024 to 23 JAN 2025

SW-4, 26 DEC 2024 to 23 JAN 2025