

WAAS CH 42701 W17A	APP CRS 173°	Rwy ldg 6014 TDZE 1351 Apt Elev 1354
--	------------------------	---

RNAV (GPS) RWY 17R

CLARENCE E PAGE MUNI (R/C/E)

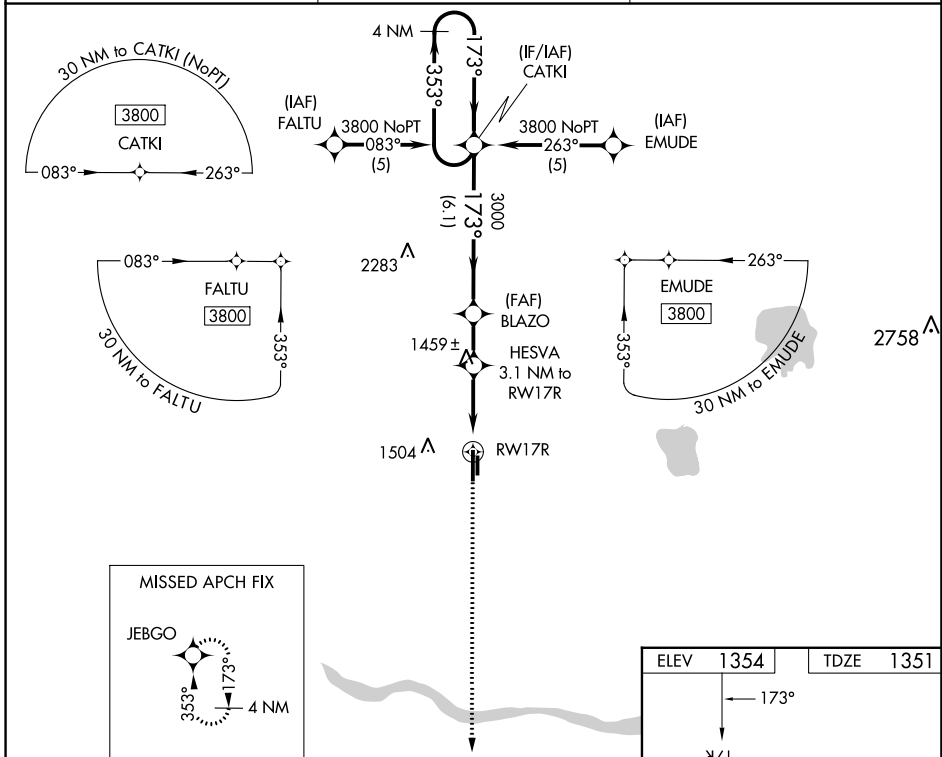
⚠ DME/DME RNP-0.3 NA. When local altimeter setting not received, use Wiley Post altimeter setting and increase all DA 29 feet and all MDA 40 feet and increase LPV all Cats visibility ¼ mile. VDP NA when using Wiley Post altimeter setting.

MISSED APPROACH: Climb to 3800 direct JEBGO and hold.

AWOS-3
125.05

OKE CITY APP CON
124.6 266.8

UNICOM
123.0 (CTAF)



SC-1, 26 DEC 2024 to 23 JAN 2025

SC-1, 26 DEC 2024 to 23 JAN 2025

4 NM Holding Pattern		VGSi and RNAV glidepath not coincident. (VGSi Angle 3.00/TCH 52).		3800	JEBGO
GP 3.00° TCH 52		*2380		*LNAV only	
6.1 NM		1.9 NM	2 NM	1.1 NM	
CATEGORY	A	B	C	D	
LPV DA	1601-¾ 250 (300-¾)			NA	
LNAV MDA	1760-1	409 (500-1)	1760-1¼ 409 (500-1¼)	NA	
CIRCLING	1800-1 446 (500-1)	1820-1 466 (500-1)	1840-1½ 486 (500-1½)	NA	

