

ILS or LOC/DME Z RWY 18

LOC I-FRJ 111.3	APCH CRS 177°	Rwy Idg 11,100 TDZE 1267 Arprt Elev 1291
---------------------------	-------------------------	---

[USAF]

TINKER AFB (KTIK)

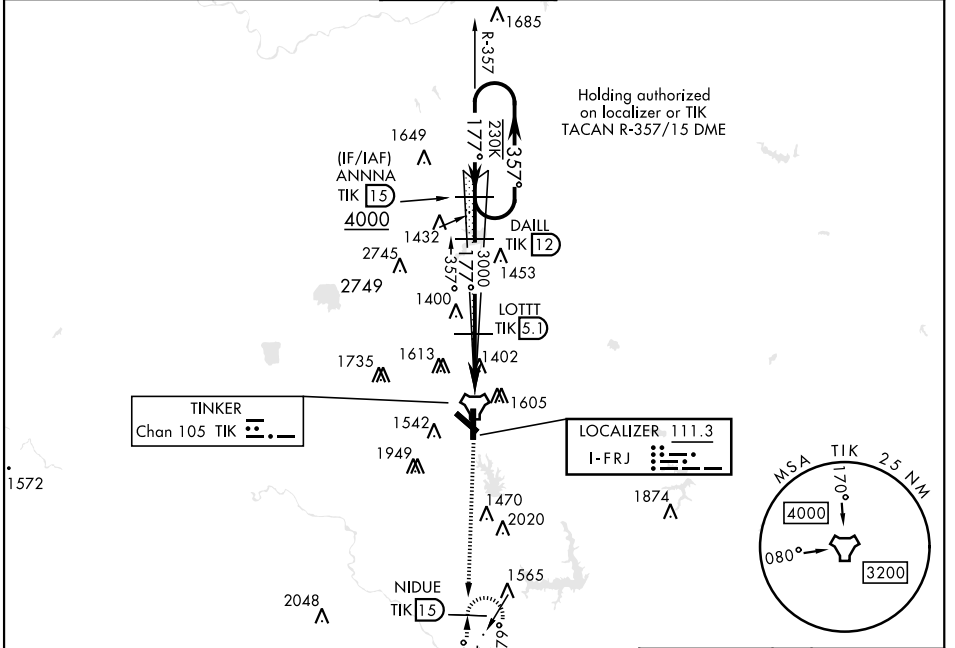
▼ * When ALS inop, increase all CAT to 55 and vis to 1 mile.
 ** CAT E Circling NA in sector S of Rwy 13-31 and W of Rwy 18-36.
 Circling NA to Rwy 18.

SALSF



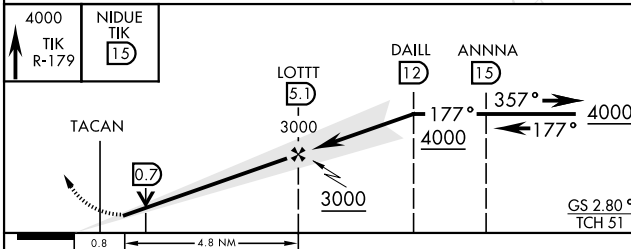
MISSED APPROACH: Climb to 4000 on TIK TACAN R-179 to NIDUE and hold.

ATIS ★ 270.1	OKE CITY APP CON 124.2 336.4	TOWER 124.45 251.05	GND CON 121.8 275.8	CLNC DEL 119.7 335.8	ASR
------------------------	--	-------------------------------	-------------------------------	--------------------------------	-----

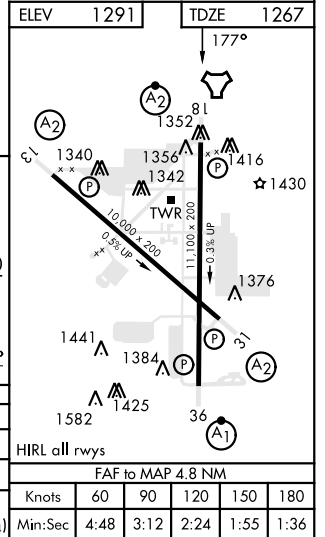


Localizer unusable within 0.4 NM from threshold.
 Localizer NA beyond 15° right of course.

EMERG SAFE ALT 100 NM 4700



CATEGORY	A	B	C	D	E
S-ILS 18	1467/40		200 (200-¾)		
S-LOC 18 *	1640/40		373 (400-¾)		
C CIRCLING **	1900-1 609 (700-1)	1960-1¾ 669 (700-1¾)	1960-2 669 (700-2)	1960-2¼ 669 (700-2¼)	



FAF to MAP 4.8 NM					
Knots	60	90	120	150	180
Min:Sec	4:48	3:12	2:24	1:55	1:36

ILS or LOC/DME Z RWY 18

SC-1, 26 DEC 2024 to 23 JAN 2025

SC-1, 26 DEC 2024 to 23 JAN 2025