

OKLAHOMA CITY, OKLAHOMA

RNAV (GPS) RWY 18

APCH CRS	Rwy Idg	11,100
176°	THRE	1260
	Arprt Elev	1291

(USAF)

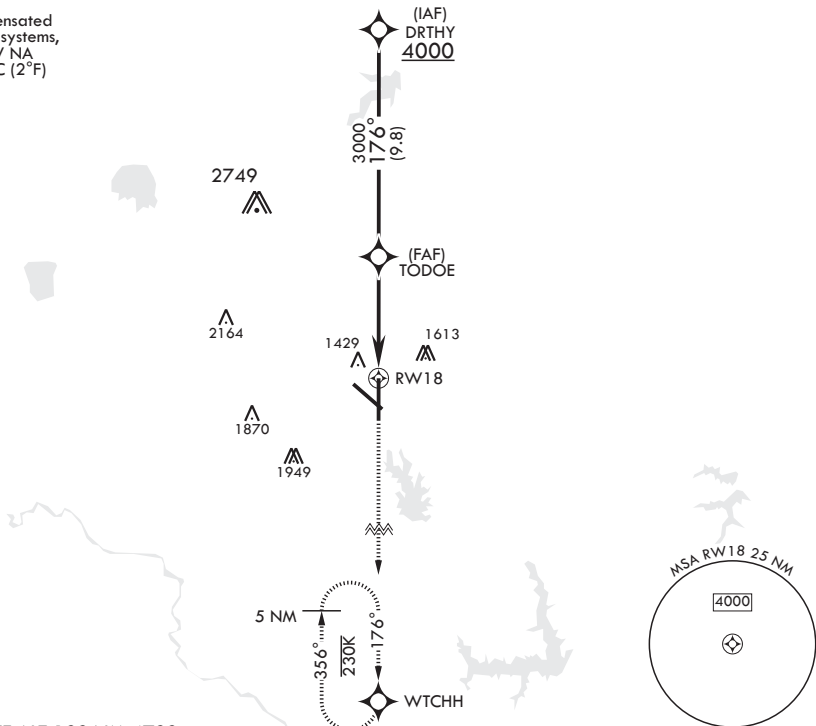
TINKER AFB (KTIK)

<p>▼ * Cat E Circling not authorized in sector S of Rwy 13-31 and W of Rwy 18-36.</p>	<p>SALS</p>	<p>MISSED APPROACH: Climb to 4000 direct WTCHH waypoint and hold.</p>
--	-------------	---

<p>ATIS★</p> <p>270.1</p>	<p>OKE CITY APP CON/DEP CON</p> <p>124.2 336.4</p>	<p>TOWER</p> <p>124.45 251.05</p>	<p>GND CON</p> <p>121.8 275.8</p>	<p>CLNC DEL</p> <p>119.7 335.8</p>	<p>ASR</p>
---------------------------	--	-----------------------------------	-----------------------------------	------------------------------------	------------

DME/DME RNP-0.3 NA

For uncompensated Baro-VNAV systems, LNAV/VNAV NA below -17°C (2°F)



EMERG SAFE ALT 100 NM 4700

<p>DRTHY</p> <p>4000</p> <p>176°</p> <p>TODOE</p> <p>3000</p> <p>GP 3.00° TCH 50</p>	<p>VGSI and descent angles not coincident.</p> <p>4000</p> <p>WTCHH</p> <p>ELEV 1291</p>	<p>THRE 1260</p> <p>176°</p> <p>1340</p> <p>1356</p> <p>1342</p> <p>TWR</p> <p>10,000 x 200</p> <p>0.5% UP</p> <p>11,100 x 200</p> <p>-0.3% UP</p> <p>BCN 1430</p> <p>1376</p> <p>1441</p> <p>1384</p> <p>1425</p> <p>36 (A1)</p> <p>HIRL all Rwys</p>	
<p>1.4 NM to RWY18</p> <p>5.2 NM</p>			
<p>CIRCLING*</p> <p>1820-1 529 (600-1)</p>	<p>2000-2 709 (800-2)</p>	<p>2040-2½ 749 (800-2½)</p>	<p>2040-2¾ 749 (800-2¾)</p>

OKLAHOMA CITY, OKLAHOMA

35°25'N - 97°23'W

TINKER AFB (KTIK)

Orig 13JUN24

RNAV (GPS) RWY 18

SC-1, 26 DEC 2024 to 23 JAN 2025

SC-1, 26 DEC 2024 to 23 JAN 2025