

# TACAN Z RWY 36

TACAN TIK Chan <b>105</b>	APCH CRS <b>359°</b>	Rwy Idg <b>11,100</b> TDZE <b>1291</b> Arprt Elev <b>1291</b>
------------------------------	-------------------------	---

[USAF]

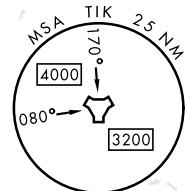
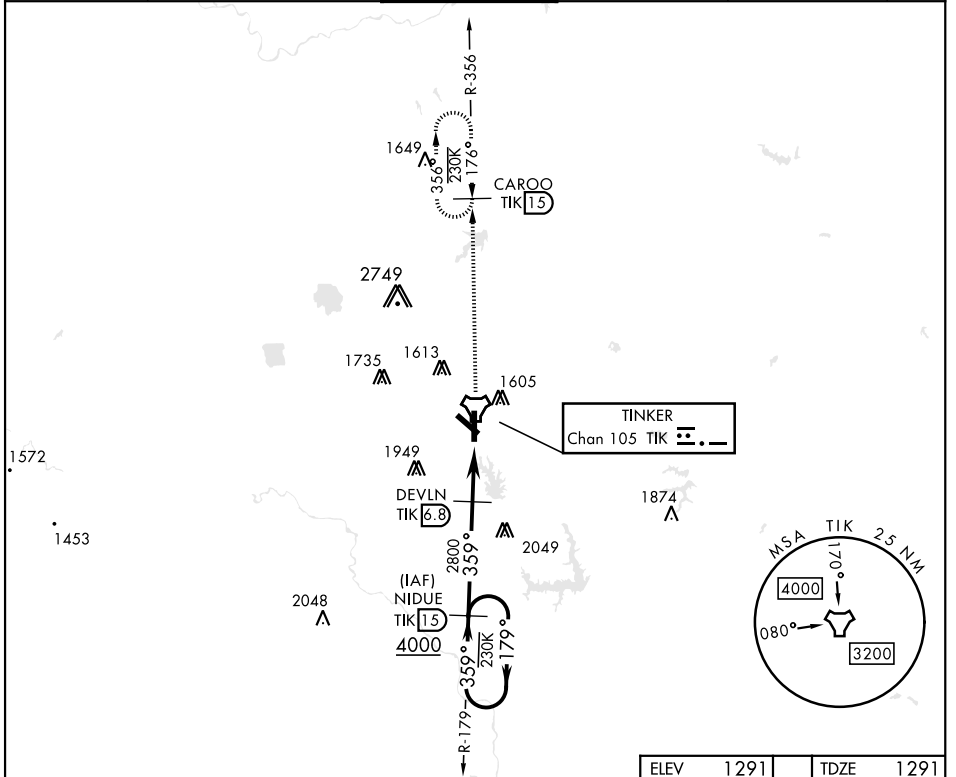
TINKER AFB (KTIK)

▼ \* When ALS inop, increase CAT AB RVR to 50 and vis to 1 mile, CAT CDE increase vis by ½ mile.  
 \*\* CAT E Circling not authorized in sector S of Rwy 13-31 and W of Rwy 18-36. Circling NA to Rwy 18.

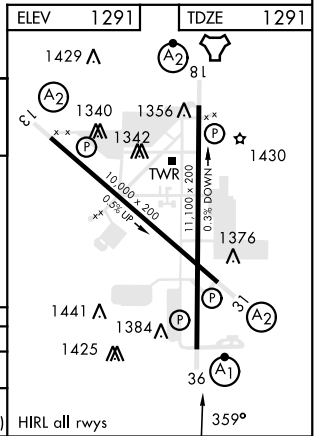
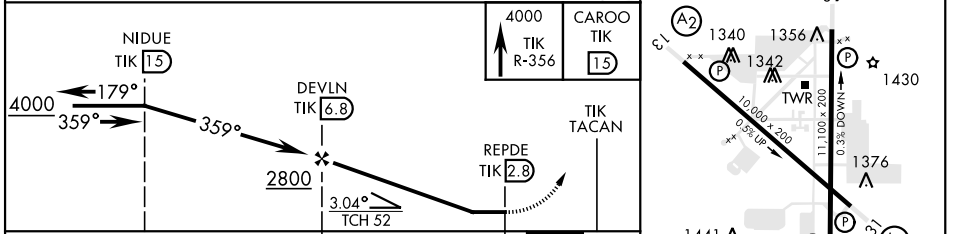


MISSED APPROACH: Climb to 4000 on TIK TACAN R-356 to CAROO and hold.

ATIS ★ <b>270.1</b>	OKE CITY APP CON <b>120.45 288.325</b>	TOWER <b>124.45 251.05</b>	GND CON <b>121.8 275.8</b>	CLNC DEL <b>119.7 335.8</b>	ASR
------------------------	---	-------------------------------	-------------------------------	--------------------------------	-----



EMERG SAFE ALT 100 NM 4700



CATEGORY	A	B	C	D	E
S-36 *	1720/24	429 (500-½)	1720/40	429 (500-¾)	
CIRCLING **	1820-1	529 (600-1)	1960-1¾ 669 (700-1¾)	1960-2 669 (700-2)	1960-2¼ 669 (700-2¼)

# TACAN Z RWY 36

SC-1, 26 DEC 2024 to 23 JAN 2025

SC-1, 26 DEC 2024 to 23 JAN 2025