

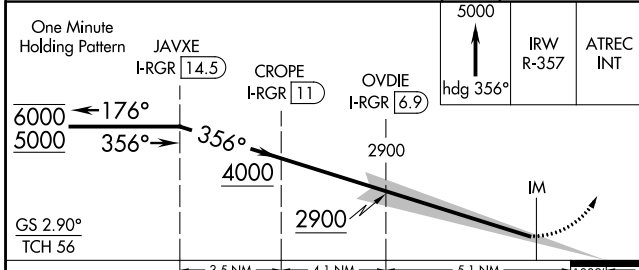
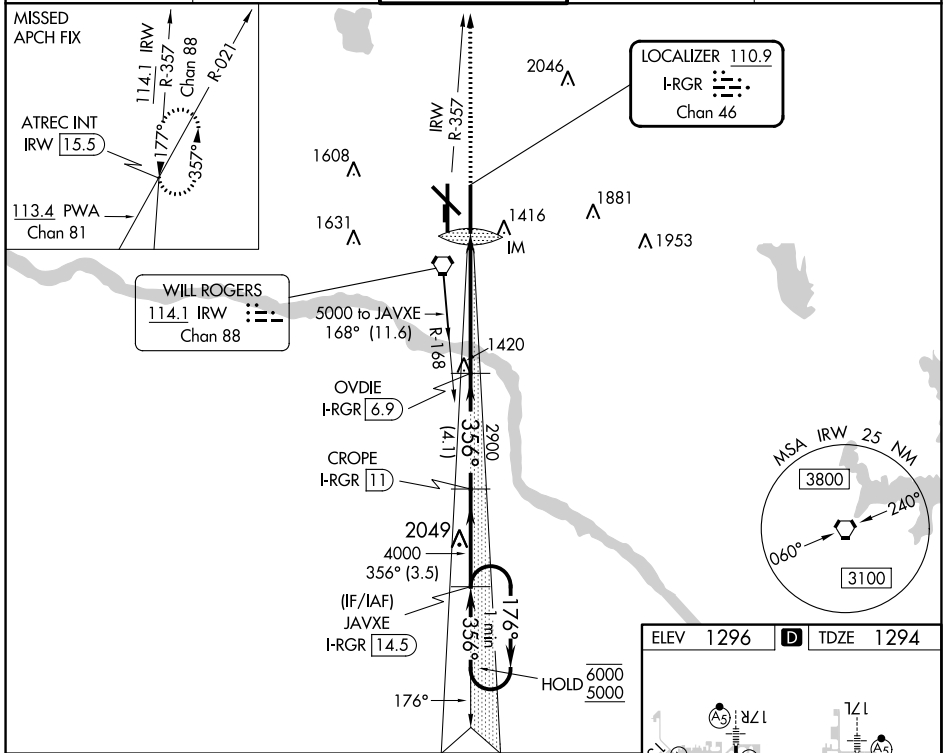
LOC/DME I-RGR <b>110.9</b> Chan <b>46</b>	APP CRS <b>356°</b>	Rwy Idg <b>9802</b> TDZE <b>1294</b> Apt Elev <b>1296</b>
---	------------------------	---

# ILS RWY 35R (SA CAT I)

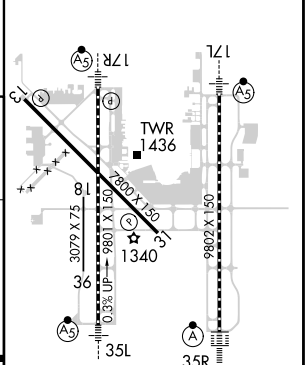
OKC WILL ROGERS INTL (OKC)

DME required.		ALSIF-2 	MISSED APPROACH: Climb to 5000 on heading 356° and on IRW VORTAC R-357 to ATREC INT/IRW 15.5 DME and hold, continue climb-in-hold to 5000.	
ASR Simultaneous approach authorized. Requires specific OPSPEC, MSPEC, or LOA approval and use of HUD to DH.				

D-ATIS <b>125.85</b>	OKE CITY APP CON <b>124.6 266.8</b>	ROGERS TOWER <b>119.35 269.45</b>	GND CON <b>121.9 348.6</b>	CLNC DEL <b>124.35</b>
-------------------------	--	--------------------------------------	-------------------------------	---------------------------



ELEV 1296	<b>D</b> TDZE 1294
-----------	--------------------



CATEGORY	A	B	C	D
S-ILS 35R	RA 178/14		150 DA 1444	
<b>SA CATEGORY I ILS - SPECIAL AIRCREW &amp; AIRCRAFT CERTIFICATION REQUIRED</b>				
REIL Rwy 13 and 31 TDZ/CL Rwy 35R MIRL Rwy 13-31 HIRL Rwy 17L-35R and 17R-35L				

SC-1, 26 DEC 2024 to 23 JAN 2025

SC-1, 26 DEC 2024 to 23 JAN 2025