

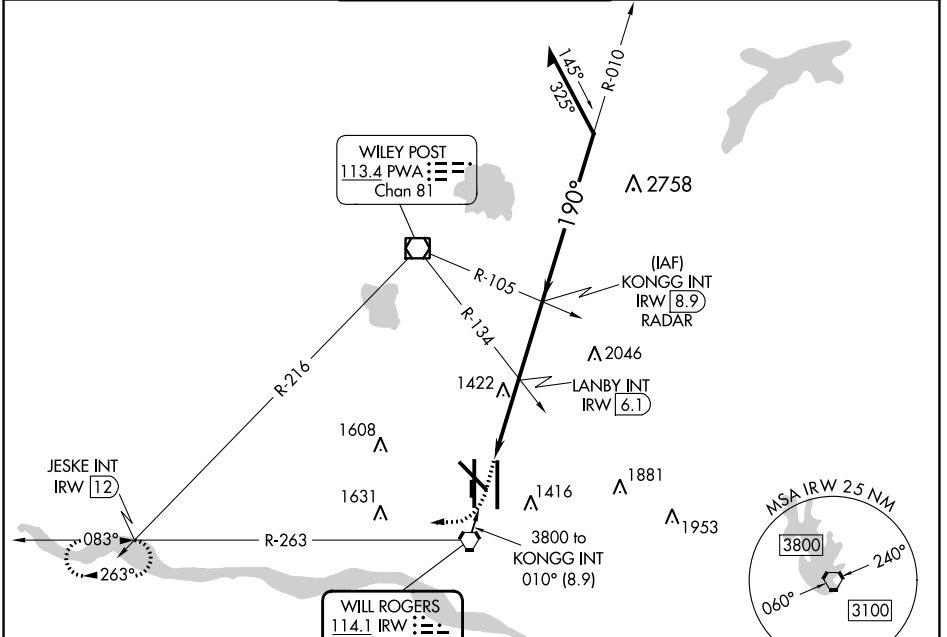
VOR IRW <b>114.1</b> Chan <b>88</b>	APP CRS <b>190°</b>	Rwy Idg TDZE <b>1287</b> Apt Elev <b>1296</b>
---	------------------------	---

# VOR RWY 17L

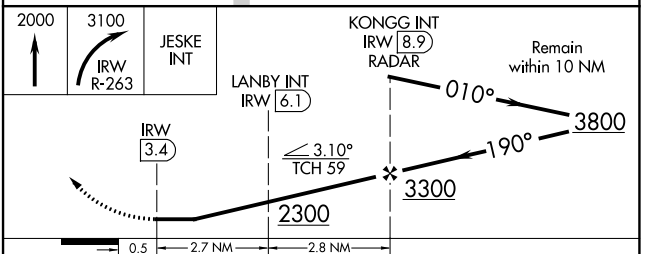
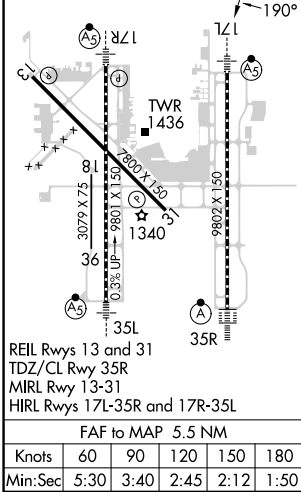
OKC WILL ROGERS INTL (OKC)

**⚠** Inop table does not apply to S-17L Cats B, C, D, and E. Cat E procedure turn NA. For inop ALS, increase LANBY Fix Minimums S-17L visibilities ASR  
**⚠** MISSED APPROACH: Climb to 2000 then climbing right turn to 3100 on IRW VORTAC R-263 to JESKE INT/12 IRW DME and hold.

D-ATIS <b>125.85</b>	OKC CITY APP CON <b>124.6 266.8</b>	ROGERS TOWER <b>119.35 269.45</b>	GND CON <b>121.9 348.6</b>	CLNC DEL <b>124.35</b>
-------------------------	--	--------------------------------------	-------------------------------	---------------------------



ELEV 1296	<b>D</b>	TDZE 1287
-----------	----------	-----------



CATEGORY	A	B	C	D	E
S-17L	2300/40 1013 (1100-¾)	2300-1 1013 (1100-1)	2300-2 ½	1013 (1100-2 ½)	
<b>C</b> CIRCLING	2300-1 ¼ 1004 (1100-1 ¼)	2300-1 ½ 1004 (1100-1 ½)	2300-3	1004 (1100-3)	
LANBY FIX MINIMUMS					
S-17L	1680/24	393 (400-½)	1680/40 393 (400-¾)	1680/50 393 (400-1)	1680-1 ½ 393 (400-1 ½)
<b>C</b> CIRCLING	1760-1	464 (500-1)	1960-1 ¾ 664 (700-1 ¾)	2000-2 ¼ 704 (800-2 ¼)	2240-3 944 (1000-3)

SC-1, 26 DEC 2024 to 23 JAN 2025

SC-1, 26 DEC 2024 to 23 JAN 2025