

LOC/DME HXD 110.9 Chan 46	APP CRS 356°	Rwy Idg TDZE Apt Elev	7339 1067 1087
--	------------------------	-----------------------------	---

ILS or LOC RWY 36

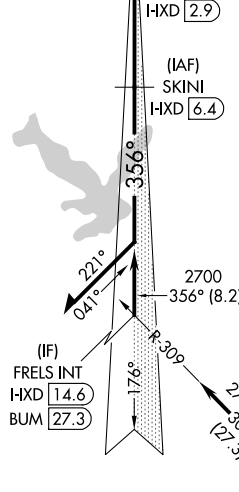
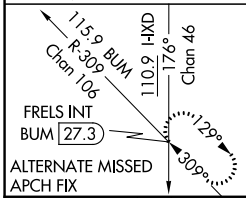
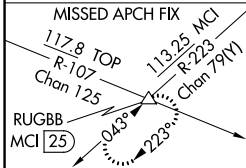
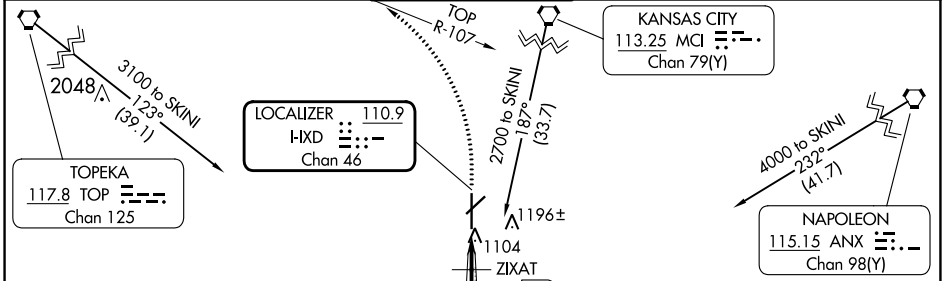
NEW CENTURY AIRCENTER (IXD)

DME required.
For inop ALS, increase S-LOC 36 Cat C/D visibility to 1 SM.

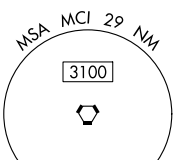
MALSRR

MISSED APPROACH: Climb to 2700 then climbing left turn to 4000 on TOP VORTAC R-107 to RUGBB/MCI 25 DME and hold.

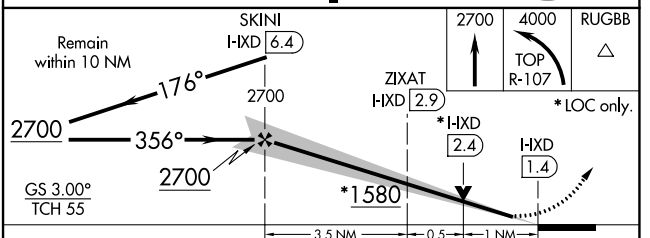
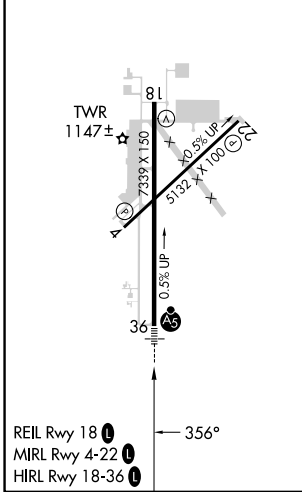
ASOS 135.325	KANSAS CITY APP CON 118.9 251.075	NEW CENTURY TOWER* 133.0 (CTAF) 0	GND CON 124.3	UNICOM 122.95
------------------------	---	---	-------------------------	-------------------------



DME REQUIRED



ELEV 1087	TDZE 1067
-----------	-----------



CATEGORY	A	B	C	D
S-ILS 36	1267-1/2 200 (200-1/2)			
S-LOC 36	1420-1/2	353 (400-1/2)	1420-5/8	353 (400-5/8)
C CIRCLING	1560-1	473 (500-1)	1580-1/2 493 (500-1/2)	1640-2 553 (600-2)

NC-2, 26 DEC 2024 to 23 JAN 2025

NC-2, 26 DEC 2024 to 23 JAN 2025