

HOWRY THREE ARRIVAL

NC-2, 26 DEC 2024 to 23 JAN 2025

OMAHA APP CON
124.5 263.0 EAST
135.875 354.05 WEST
KOFF ATIS
126.025 273.5
OMA D-ATIS
120.4

O'NEILL
113.9 ONL
Chan 86

10000
3200
1230°
(88)

COLUMBUS
116.95 OLU
Chan 114(V)

10000
3200
065°
(70)

GRAND ISLAND
116.55 GRI
Chan 112(V)



HOWRY

10000
3200
095°
(23)

LINCOLN
116.1 LNK
Chan 108

ARRIVAL ROUTE DESCRIPTION

GRAND ISLAND TRANSITION [GRI.HOWRY3]: From over GRI VOR/DME on GRI R-063 to HOWRY.

O'NEILL TRANSITION [ONL.HOWRY3]: From over ONL VORTAC on ONL R-125 and OLU R-308 to OLU VOR/DME, then on OLU R-095 to HOWRY.

From over HOWRY on OMAHA VORTAC (OVR) R-276 to BOYSS/OVR 25 DME. Thence

. . . . LANDING EPLEY AIRFIELD:

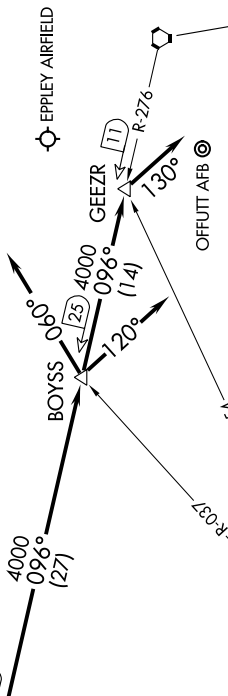
RUNWAYS 14L/R, 18: Depart BOYSS on heading 060°. Expect RADAR vectors to final approach course.

RUNWAYS 32L/R, 36: Depart BOYSS on OVR R-276 to GEEZR/OVR 11 DME, then on heading 130°. Expect RADAR vectors to final approach course.

. . . . LANDING OFFUTT AFB:

RUNWAY 13: Expect RADAR vectors to final approach course.

RUNWAY 31: Depart BOYSS on heading 120°. Expect RADAR vectors to final approach course.



OMAHA
116.3 OVR
Chan 110

NOTE: RADAR required.
NOTE: Chart not to scale.

HOWRY THREE ARRIVAL

NC-2, 26 DEC 2024 to 23 JAN 2025