


APP CRS	Rwy Idg	8013
	TDZE	982
178°	Apt Elev	985

RNAV (RNP) Z RWY 18

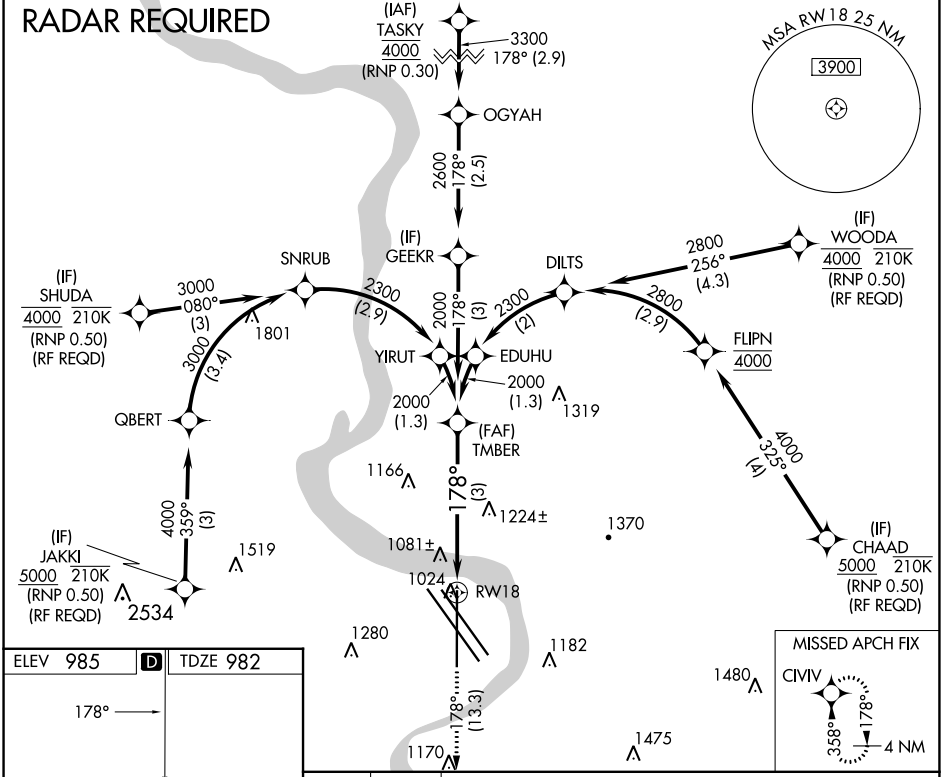
EPPLEY AIRFIELD (OMA)

▽ For uncompensated Baro-VNAV systems, procedure NA below -17°C (2°F) or above 54°C (130°F). For inoperative ALS, increase RNP 0.15 all Cats visibility to 1½ and RNP 0.30 all Cats visibility to 2. GPS required.

MALSR

MISSED APPROACH: Climb to 3000 on track 178° to CIVIV and hold.

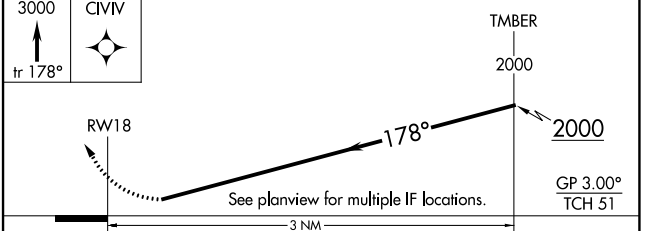
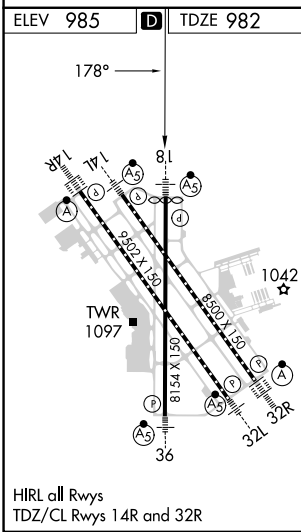
D-ATIS 120.4	OMAHA APP CON 135.875 354.05	OMAHA TOWER 132.1 256.9	GND CON 121.9	CLNC DEL 119.9
------------------------	--	-----------------------------------	-------------------------	--------------------------

RADAR REQUIRED



NC-2, 26 DEC 2024 to 23 JAN 2025

NC-2, 26 DEC 2024 to 23 JAN 2025



CATEGORY	A	B	C	D
RNP 0.15 DA		1341/40	359 (400-¾)	
RNP 0.30 DA		1576-1½	594 (600-1½)	

AUTHORIZATION REQUIRED