

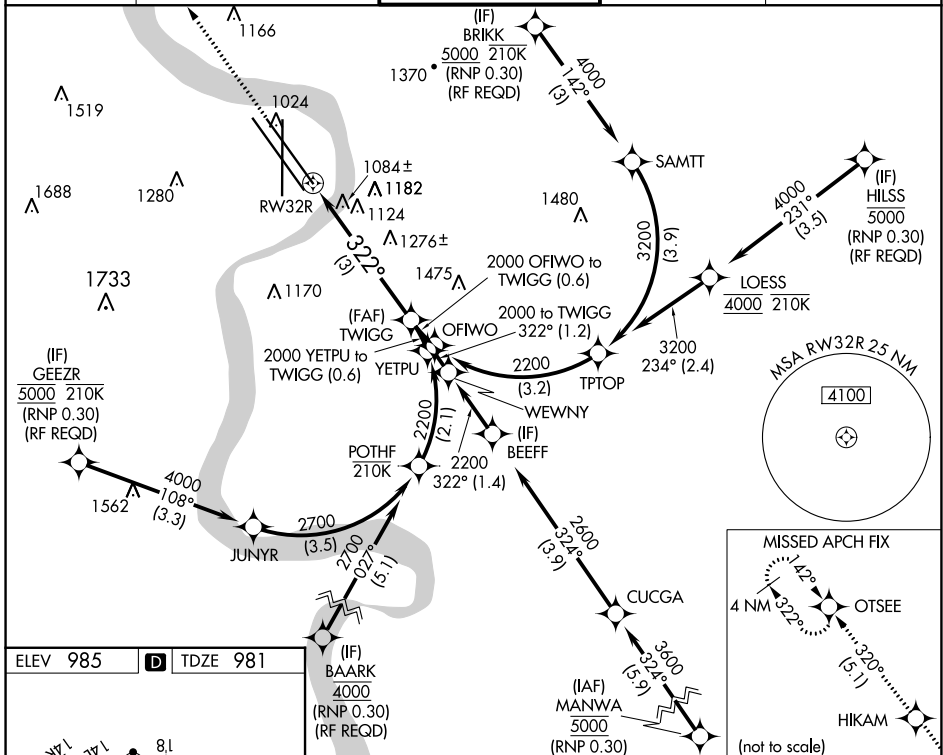
RNAV (RNP) Z RWY 32R

EPPLEY AIRFIELD (OMA)

APP CRS	Rwy Idg	8500
322°	TDZE	981
	Apt Elev	985

RNP AR APCH. RF required.	ALSF-2	MISSED APPROACH: Climb to 3300 direct HIKAM and track 320° to OTSEE and hold.
▼ For uncompensated Baro-VNAV systems, procedure NA below -19°C or above 54°C. For inop ALS, increase RNP 0.30 all Cats visibility to 1 1/2 SM.		

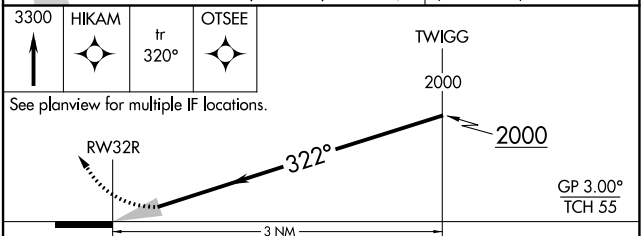
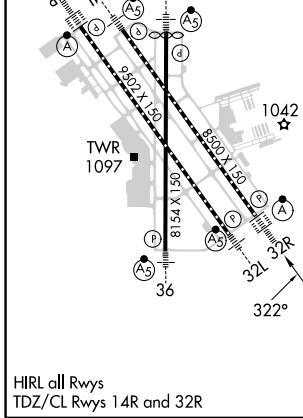
D-ATIS	OMAHA APP CON	OMAHA TOWER	GND CON	CLNC DEL
120.4	135.875 354.05	132.1 256.9	121.9	119.9



NC-2, 26 DEC 2024 to 23 JAN 2025

NC-2, 26 DEC 2024 to 23 JAN 2025

ELEV 985	D	TDZE 981
----------	----------	----------



CATEGORY	A	B	C	D
RNP 0.11 DA		1313/26	332 (400-1/2)	
RNP 0.15 DA		1407/40	426 (500-3/4)	
RNP 0.30 DA		1607-1 3/8	626 (700-1 3/8)	

AUTHORIZATION REQUIRED