

LOC/DME I-EXO <b>109.35</b> Chan 30(Y)	APP CRS <b>253°</b>	Rwy Idg TDZE <b>113</b> Apt Elev <b>113</b>	<b>6004</b>
--	------------------------	---	-------------

# ILS or LOC RWY 25

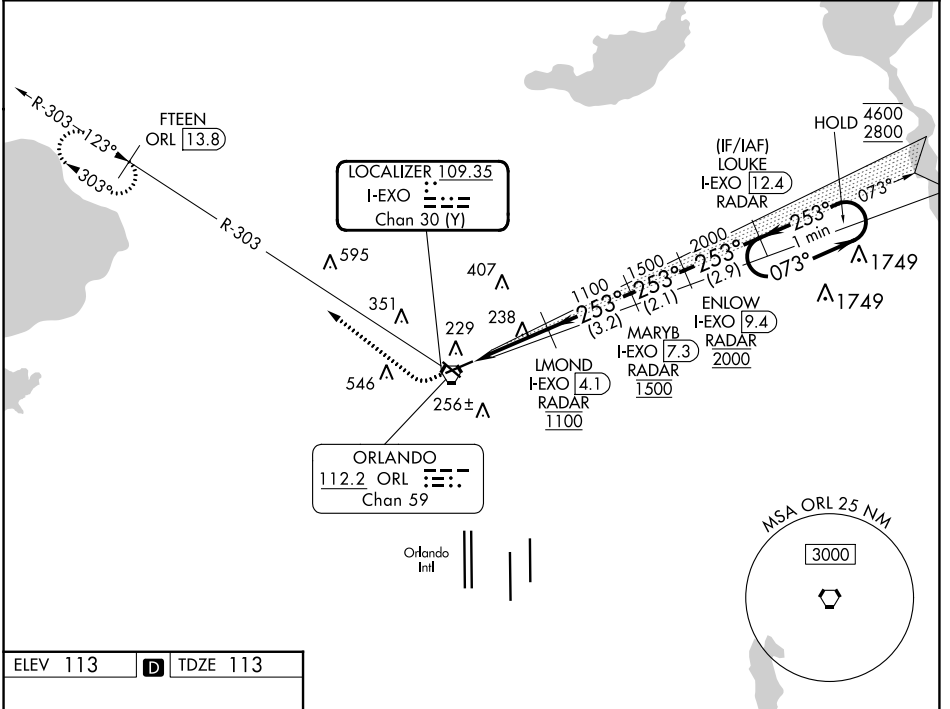
EXEC (ORL)

DME or RADAR required.

**⚠** Circling Rwy 31 NA at night. In minimum visibility conditions, bright lights on highway ½ mile south of airport may be mistaken for runway lights.

MISSED APPROACH: Climb to 600 then climbing right turn to 1700 on heading 315° and on ORL VORTAC R-303 to FTEEN/ORL 13.8 DME and hold.

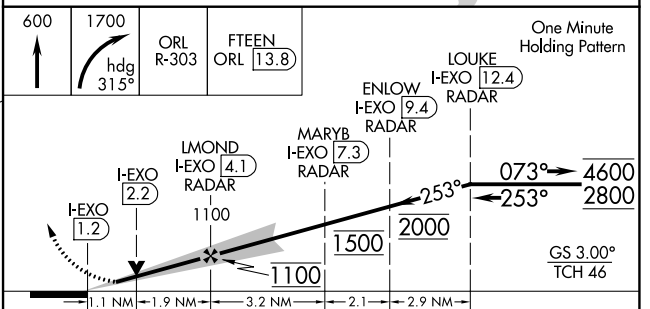
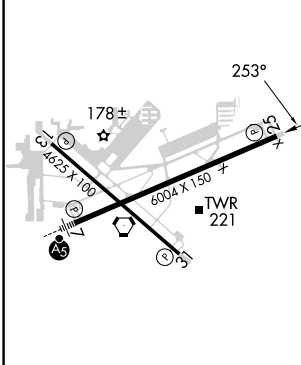
ATIS <b>127.25</b>	ORLANDO APP CON <b>124.8 351.9</b>	EXECUTIVE TOWER * <b>118.7 (CTAF) 0 239.0</b>	GND CON <b>121.4 239.0</b>	CLNC DEL <b>128.45</b>	CLNC DEL <b>125.225</b> (when twr closed)	UNICOM <b>122.95</b>
-----------------------	---------------------------------------	--	-------------------------------	---------------------------	---	-------------------------



SE-3, 26 DEC 2024 to 23 JAN 2025

SE-3, 26 DEC 2024 to 23 JAN 2025

ELEV 113	<b>D</b>	TDZE 113
----------	----------	----------



REIL Rwy 13 and 31  
HIRL Rwy 7-25 and 13-31

FAF to MAP 3 NM

Knots	60	90	120	150	180
Min:Sec	3:00	2:00	1:30	1:12	1:00

CATEGORY	A	B	C	D
S-ILS 25	313-¾		200 (200-¾)	
S-LOC 25	500-1	387 (400-1)	500-1½	387 (400-1½)
<b>C</b> CIRCLING	580-1 467 (500-1)	680-1 567 (600-1)	860-2¼ 747 (800-2¼)	860-2½ 747 (800-2½)