

HI-ILS or LOC Y RWY 14L

LOC I-TYF 111.5	APCH CRS 138°	Rwy Idg 10,008 TDZE 14 Arprt Elev 17
---------------------------	-------------------------	---

[USAF]

TYNDALL AFB (KPAM)

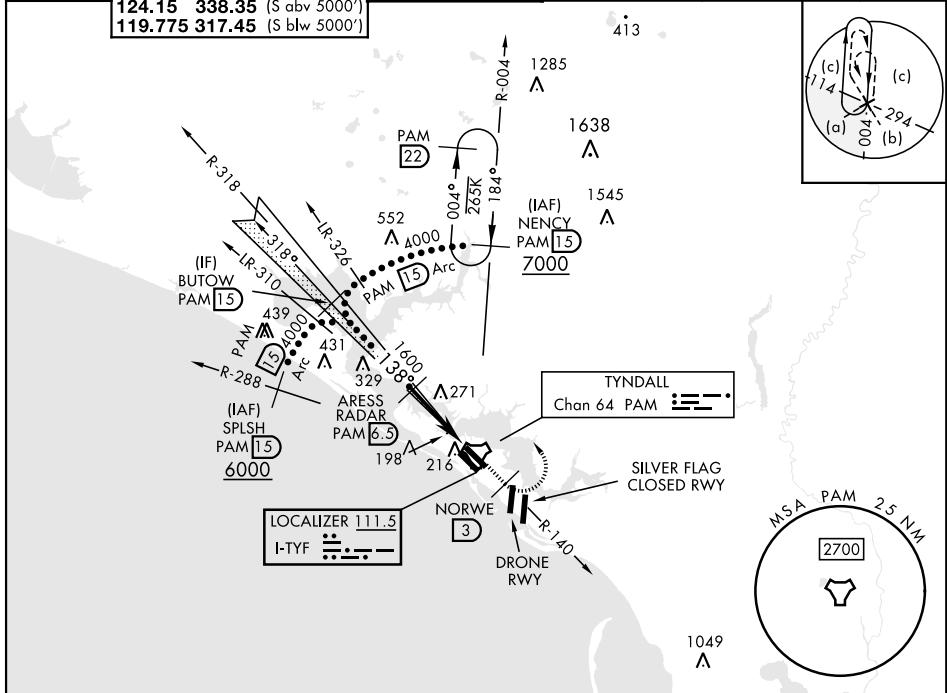
DME or RADAR required.

▲ * When ALS inop, increase RVR to 40, vis to $\frac{3}{4}$ mile.
****** When ALS inop, increase vis to 1 $\frac{1}{2}$ miles.

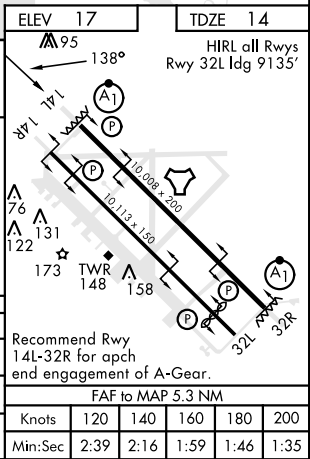
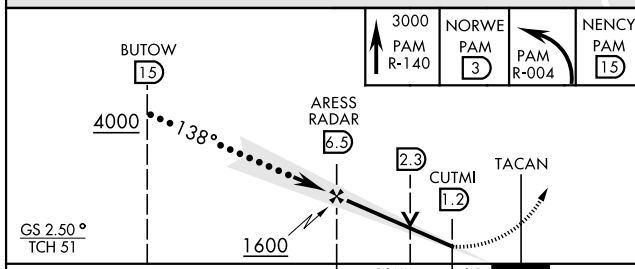


MISSED APPROACH: Track outbound PAM TACAN R-140 to 3 DME (NORWE), then turn left to join PAM R-004 to 15 DME (NENCY) and hold. Maintain 3000.

ATIS ★ 254.4	APP CON 125.2 392.1 (N abv 5000') 120.825 379.3 (N blw 5000') 124.15 338.35 (S abv 5000') 119.775 317.45 (S blw 5000')	TOWER ★ 133.95 263.15	GND CON 121.9 259.3	CLNC DEL 118.05 348.7	ASR/PAR
------------------------	--	---------------------------------	-------------------------------	---------------------------------	---------



EMERG SAFE ALT 100 NM 3300



CATEGORY	C	D	E
S-ILS 14L *	214/24	200	(200- $\frac{1}{2}$)
S-LOC 14L **	500/50	486	(500-1)
CIRCLING	540-1 $\frac{1}{2}$ 523 (600-1 $\frac{1}{2}$)	580-2 563 (600-2)	620-2 $\frac{1}{4}$ 603 (700-2 $\frac{1}{4}$)

HI-ILS or LOC Y RWY 14L

SE-3, 26 DEC 2024 to 23 JAN 2025

SE-3, 26 DEC 2024 to 23 JAN 2025