

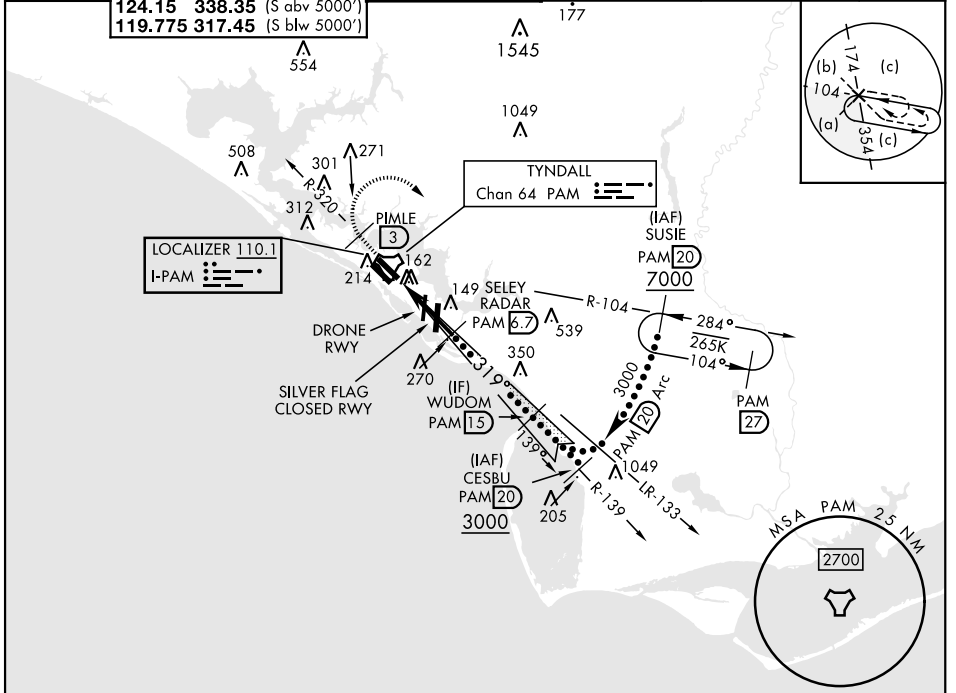
HI-ILS or LOC Y RWY 32R

LOC I-PAM 110.1	APCH CRS 319°	Rwy Idg 10,008 TDZE 14 Arprt Elev 17
---------------------------	-------------------------	---

[USAF]

TYNDALL AFB (KPAM)

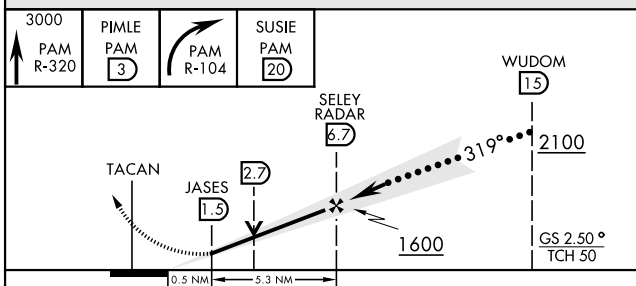
DME or RADAR required.		ALSF-1 	MISSED APPROACH: Track outbound PAM R-320 to 3 DME (PIMLE), then turn right to join PAM TACAN R-104 to 20 DME (SUSIE) and hold. Maintain 3000.				
*When ALS inop, increase RVR to 40, vis to 3/4 mile. **When ALS inop, increase RVR to 60, vis to 1 1/2 miles.			ATIS ★ 254.4	APP CON 125.2 392.1 (N abv 5000') 120.825 379.3 (N blw 5000') 124.15 338.35 (S abv 5000') 119.775 317.45 (S blw 5000')	TOWER ★ 133.95 263.15	GND CON 121.9 259.3	CLNC DEL 118.05 348.7



SE-3, 26 DEC 2024 to 23 JAN 2025

SE-3, 26 DEC 2024 to 23 JAN 2025

EMERG SAFE ALT 100 NM 3300



ELEV 17	TDZE 14
HIRL all rwys Rwy 32L Idg 9135'	
Recommend Rwy 14L-32R for apch end engagement of A-Gear.	
FAF to MAP 5.2 NM	
Knots	120 140 160 180 200
Min:Sec	2:36 2:14 1:57 1:44 1:34

CATEGORY	C	D	E
S-ILS 32R*	214/24	200 (200-1/2)	
S-LOC 32R**	540/55	526 (600-1)	
CIRCLING	540-1 1/2	580-2	620-2 1/4
	523 (600-1 1/2)	563 (600-2)	603 (700-2 1/4)

HI-ILS or LOC Y RWY 32R