

HI-TACAN Y RWY 32R

TACAN PAM Chan 64	APCH CRS 326°	Rwy ldg 10,008 TDZE 14 Arpt Elev 17
-----------------------------	-------------------------	----------------------------------------------------------------

[USAF]

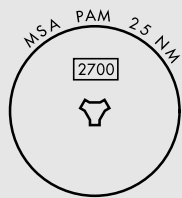
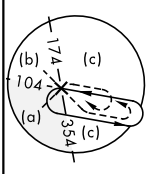
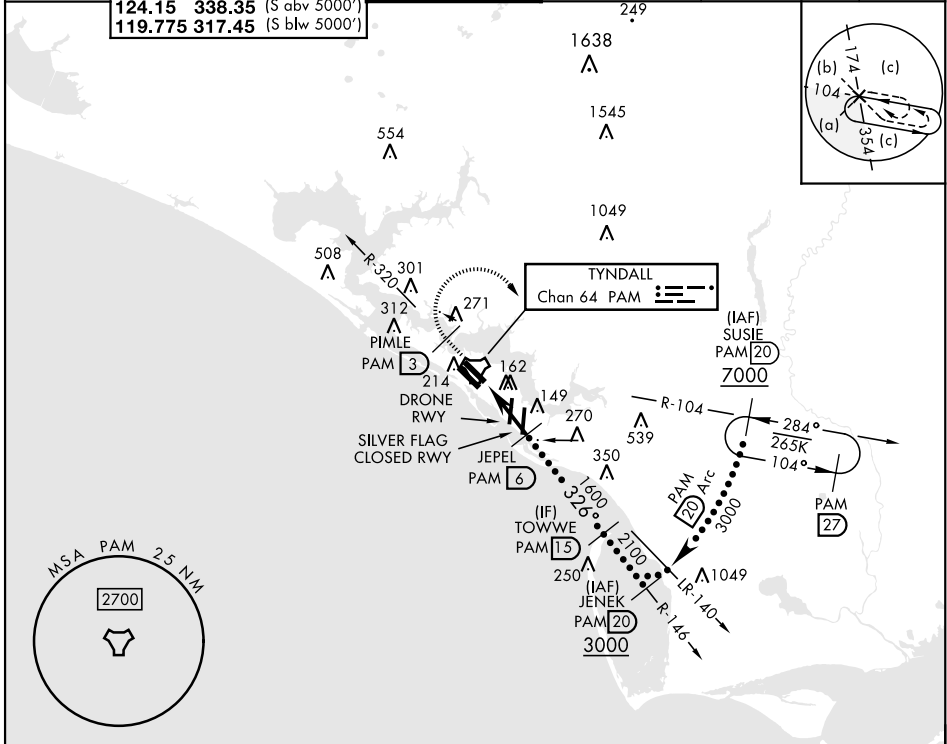
TYNDALL AFB (KPAM)

▼ * When ALS inop, increase vis to 1½ miles.

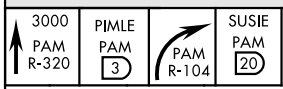


MISSED APPROACH: Track outbound PAM TACAN R-320 to 3 DME (PIMLE), then turn right to join PAM R-104 to 20 DME (SUSIE) and hold. Maintain 3000.

ATIS ★ 254.4	APP CON 125.2 392.1 (N abv 5000') 120.825 379.3 (N blw 5000') 124.15 338.35 (S abv 5000') 119.775 317.45 (S blw 5000')	TOWER ★ 133.95 263.15	GND CON 121.9 259.3	CLNC DEL 118.05 348.7	ASR/PAR
------------------------	----------------------------------------------------------------------------------------------------------------------------------------------------------------	---------------------------------	-------------------------------	---------------------------------	---------



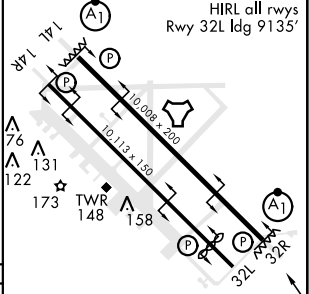
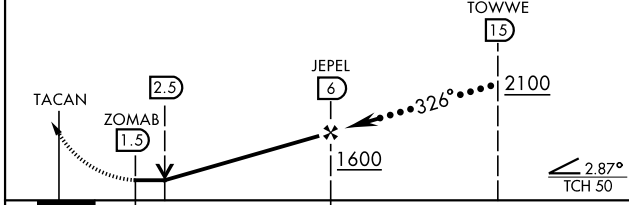
EMERG SAFE ALT 100 NM 3300



VGSI and descent angles not coincident (VGSI Angle 2.50/TCH 50).

ELEV 17	TDZE 14
---------	---------

HIRL all rwys
Rwy 32L ldg 9135'



CATEGORY	C	D	E
S-32R *	480/50	466 (500-1)	
CIRCLING	540-1 ½	580-2	620-2 ¼
	523 (600-1 ½)	563 (600-2)	603 (700-2 ¼)

Recommend Rwy 14L-32R for apch end engagement of A-Gear.

HI-TACAN Y RWY 32R

SE-3, 26 DEC 2024 to 23 JAN 2025

SE-3, 26 DEC 2024 to 23 JAN 2025