

PANAMA CITY, FLORIDA

ILS or LOC Z RWY 14L

LOC I-TYF 111.5	APCH CRS 138°	Rwy Idg 10,008 TDZE 14 Arpt Elev 17	[USAF]	TYNDALL AFB (KPAM)
---------------------------	-------------------------	--	--------	--------------------

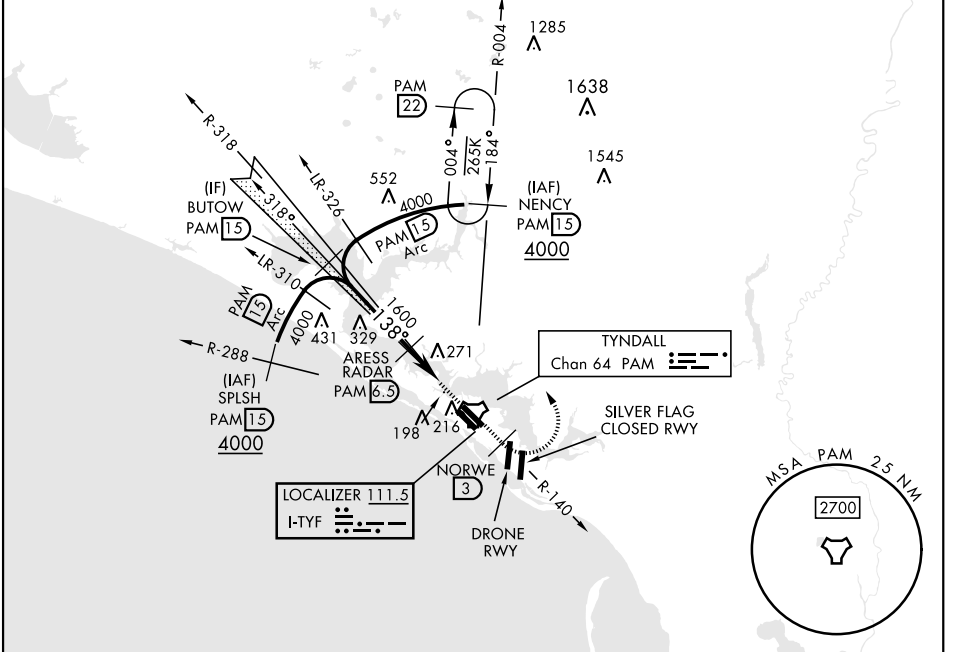
DME or RADAR required

▼ * When ALS inop, increase RVR to 40 and vis to ½ mile.
 ** When ALS inop, increase CAT AB RVR to 55, vis to 1 mile;
 CAT CDE vis to 1 ½ miles.

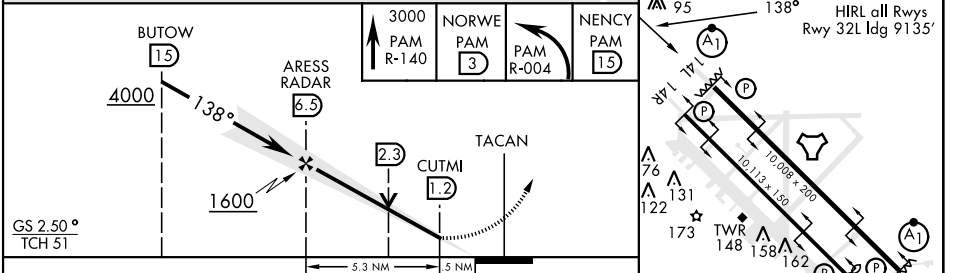
ALS-F1 (A1)

MISSED APPROACH: Track outbound PAM TACAN R-140 to 3 DME (NORWE), then turn left to join PAM R-004 to 15 DME (NENCY) and hold. Maintain 3000.

ATIS ★ 254.4	APP CON 125.2 392.1 (N abv 5000') 120.825 379.3 (N blw 5000') 124.15 338.35 (S abv 5000') 119.775 317.45 (S blw 5000')	TOWER ★ 133.95 263.15	GND CON 121.9 259.3	CLNC DEL 118.05 348.7	ASR/PAR
------------------------	--	---------------------------------	-------------------------------	---------------------------------	---------



EMERG SAFE ALT 100 NM 3300



CATEGORY	A		B		C		D		E		
	214/24		200		(200-½)						
S-ILS 14L *	500/24		486 (500-½)		500/50		486		(500-1)		
S-LOC 14L **	540-1		523 (600-1)		540-1½		580-2		620-2¼		
CIRCLING	540-1		523 (600-1)		540-1½		580-2		620-2¼		
	523 (600-1)		540-1½		563 (600-2)		603 (700-2¼)				
ELEV 17		TDZE 14		HIRL all Rwy 32L Idg 9135'		Recommend Rwy 14L-32R for apch end engagement of A-Gear.		FAF to MAP 5.3 NM		Knots 60 90 120 150 180	
								Min:Sec 5:18 3:32 2:39 2:07 1:46			

PANAMA CITY, FLORIDA 30°04'N-85°34'W TYNDALL AFB (KPAM)
 Amdt 4 20MAY21

ILS or LOC Z RWY 14L

SE-3, 26 DEC 2024 to 23 JAN 2025

SE-3, 26 DEC 2024 to 23 JAN 2025