

PANAMA CITY, FLORIDA

RNAV (GPS) RWY 14R

WAAS CH 71278 W14B	APCH CRS 138°	Rwy ldg 10,113 TDZE 15 Arprt Elev 17
--------------------------	------------------	--

- (USAF)

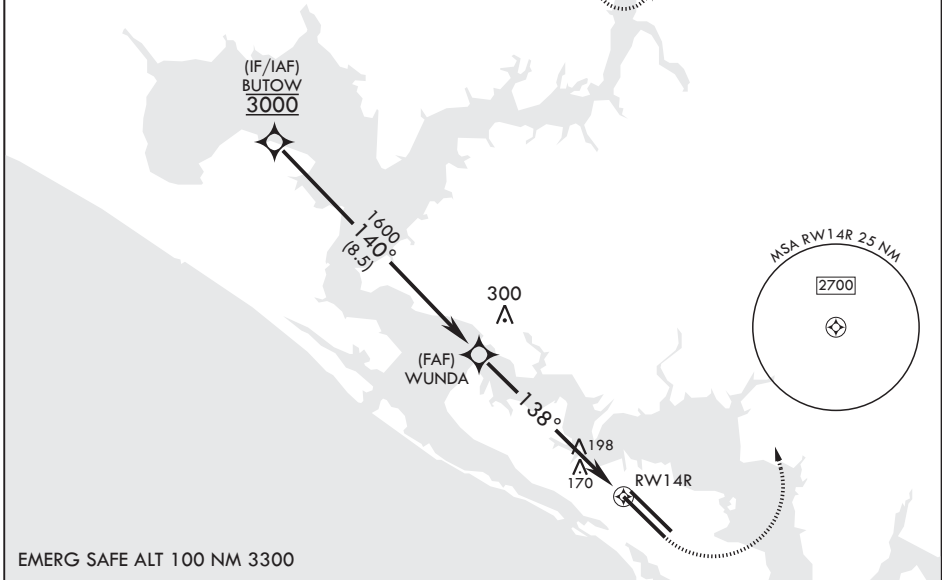
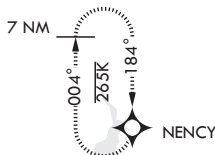
TYNDALL AFB (KPAM)

RNP APCH MISSED APPROACH: Climb to 600 then climbing left turn to 3000 direct NENCY and hold.

ATIS ★ 254.4	APP CON/DEP CON 119.775 317.45 BLW 5000' 124.15 338.35 ABV 5000'	TOWER ★ 133.95 263.15	GND CON 121.9 259.3	CLNC DEL 118.05 348.7	ASR/PAR
-----------------	--	--------------------------	------------------------	--------------------------	---------

For uncompensated Baro-VNAV systems, Procedure NA below 15°C (59°F) or above 54°C (130°F).

Average Cold Temperature based on standard -30.00°C ISA deviation.



EMERG SAFE ALT 100 NM 3300

BUTOW	VGSi and RNAV glidepath not coincident (VGSi angle 2.50/TCH 36).		600	3000	NENCY	ELEV 17	TDZE 15
3000	140°		↑	↶	⊙	Rwy 32L ldg 9135'	
GP 2.50° TCH 45	WUNDA	1600	1.6 NM to RWY 14R		RWY 14R		
		138°	5.8 NM				
CATEGORY	A	B	C	D	E		
LPV DA		215-¾	200		(200-¾)		
LNAV/VNAV DA		420-1⅛	405		(500-1⅞)		
LNAV MDA	500-1	485 (500-1)	500-1⅞	485	(500-1⅞)		
Ⓢ CIRCLING	540-1	523 (600-1)	540-1½ 523 (600-1½)	580-2 563 (600-2)	620-2¼ 603 (700-2¼)	HIRL all Rwys Recommend Rwy 14L-32R for apch end engagement of A-Gear.	

PANAMA CITY, FLORIDA

30°04'N - 85°34'W

TYNDALL AFB (KPAM)

Amdt 3 22APR21

RNAV (GPS) RWY 14R

SE-3, 26 DEC 2024 to 23 JAN 2025

SE-3, 26 DEC 2024 to 23 JAN 2025