

# NDB/DME RWY 6

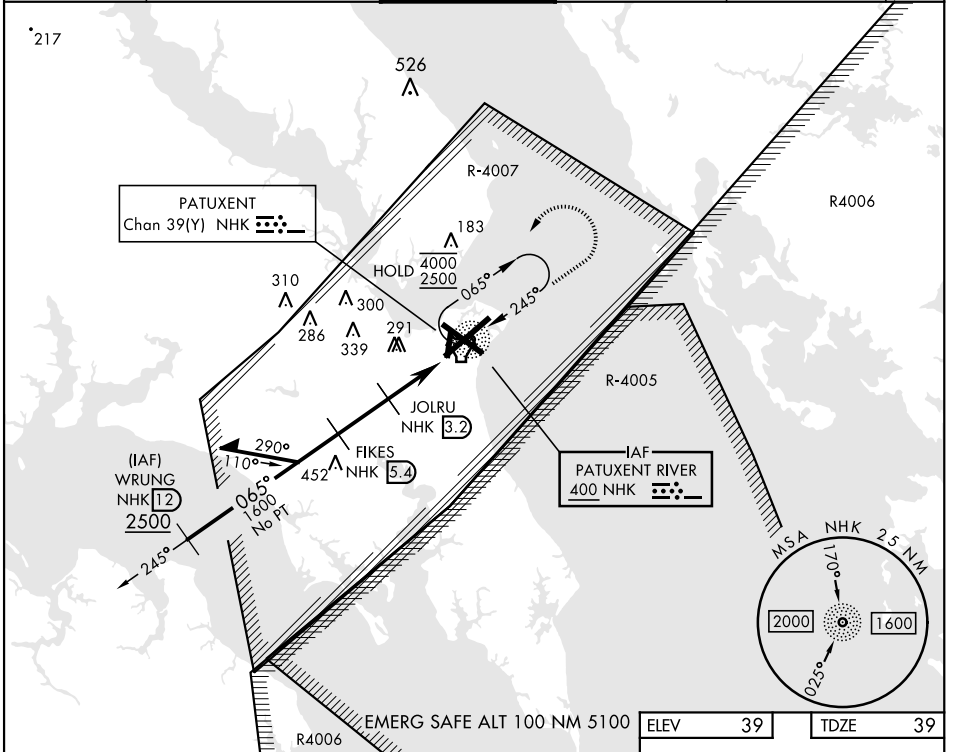
NDB NHK <b>400</b>	APCH CRS <b>065°</b>	Rwy ldg <b>11,799</b> TDZE <b>39</b> Arprt Elev <b>39</b>
-----------------------	-------------------------	---

[USN]

PATUXENT RIVER NAS (TRAPNELL FIELD) (KNKH)

DME or RADAR required		ALSF-1 	MISSED APPROACH: Climb to 2200 on 065° bearing from NHK NDB, then climbing left turn to 2500 direct NHK NDB and hold.
*When ALS inop, increase CAT AB vis to 1 mile, CAT CD vis to 1½ miles.			

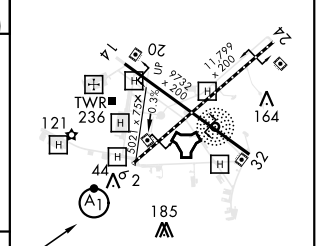
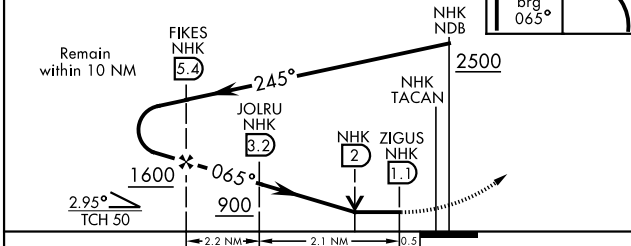
ATIS <b>322.425</b>	APP/DEP CON * <b>121.0 250.3</b>	TOWER <b>123.7 343.65</b>	GND CON <b>120.6 336.4</b>	CLNC DEL <b>135.2 316.125</b>	ASR/PAR
------------------------	-------------------------------------	------------------------------	-------------------------------	----------------------------------	---------



NE-3, 26 DEC 2024 to 23 JAN 2025

NE-3, 26 DEC 2024 to 23 JAN 2025

ELEV	39	TDZE	39
------	----	------	----



CATEGORY	A	B	C	D
S-6 *	560-¾ 521 (600-¾)		560-1 521 (600-1)	
CIRCLING	560-1 521 (600-1)	600-1 561 (600-1)	620-1½ 581 (600-1½)	680-2 641 (700-2)

HIRL Rwy 14-32, 6-24  
TDZL/CL Rwy 6

# NDB/DME RWY 6