

PATUXENT RIVER, MARYLAND

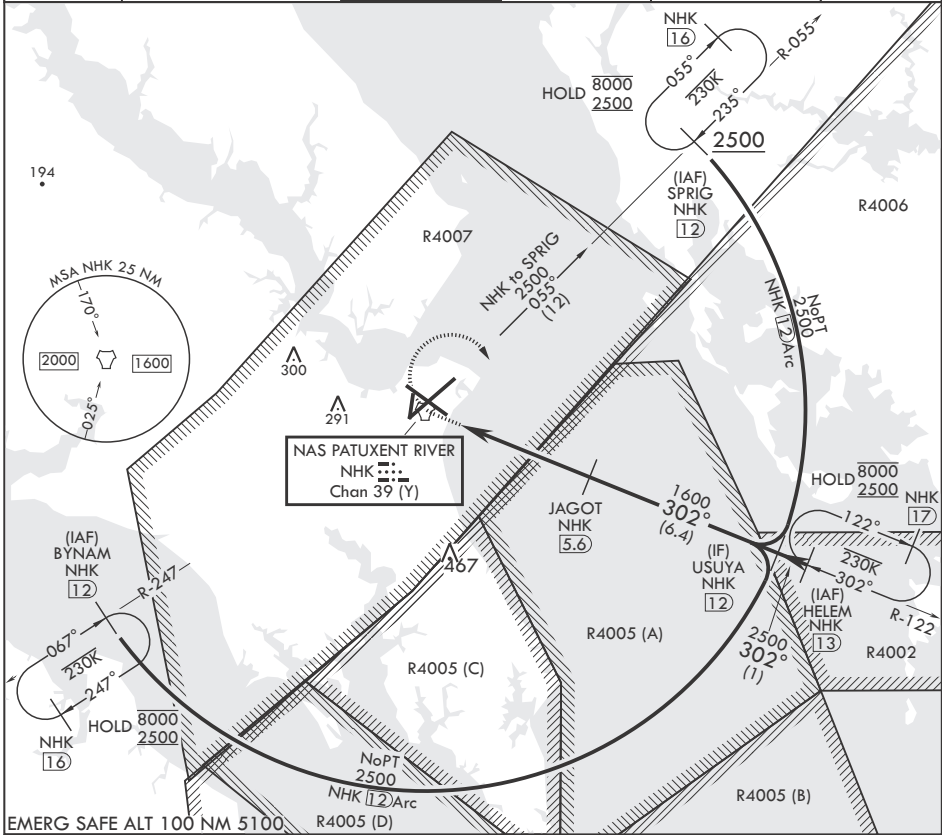
# TACAN Z RWY 32

TACAN NHK Chan 39 (Y)	APCH CRS 302°	Rwy ldg TDZE 18	Arprt Elev 39
-----------------------	---------------	-----------------	---------------

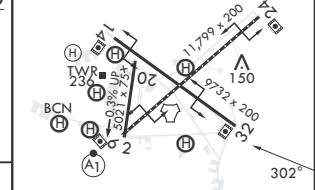
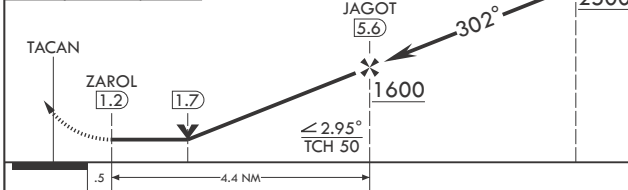
- (USN) PATUXENT RIVER NAS (TRAPNELL FLD) (KNHK)

**MISSED APPROACH:** Climb to 500, then climbing right turn to 2500 on NHK TACAN R-122 to HELEM and hold.

ATIS 322.425	APP CON/DEP CON* 121.0 250.3	TOWER 123.7 343.65	GND CON 120.6 336.4	CLNC DEL 135.2 316.125	ASR/PAR
--------------	------------------------------	--------------------	---------------------	------------------------	---------



EMERG SAFE ALT 100 NM 5100	USUYA 12	ELEV 39	TDZE 18
----------------------------	----------	---------	---------



CATEGORY	A	B	C	D
S-32	400-1 382 (400-1)	400-1 $\frac{1}{8}$ 382 (400-1 $\frac{1}{8}$ )	400-1 $\frac{1}{2}$ 382 (400-1 $\frac{1}{2}$ )	680-2
<b>C</b> CIRCLING	560-1 521 (600-1)	600-1 561 (600-1)	620-1 $\frac{1}{2}$ 581 (600-1 $\frac{1}{2}$ )	680-2 641 (700-2)

HIRL Rwy 6-24, 14-32  
TDZL/CL Rwy 6

PATUXENT RIVER, MARYLAND  
Orig 02DEC21

38°17'N - 76°25'W PATUXENT RIVER NAS (TRAPNELL FLD) (KNHK)

# TACAN Z RWY 32

NE-3, 26 DEC 2024 to 23 JAN 2025

NE-3, 26 DEC 2024 to 23 JAN 2025