

PATUXENT RIVER, MARYLAND

TACAN Z RWY 6

TACAN NHK Chan 39 (Y)	APCH CRS 067°	Rwy ldg TDZE 39	11,799
		Arprt Elev 39	

(USN)

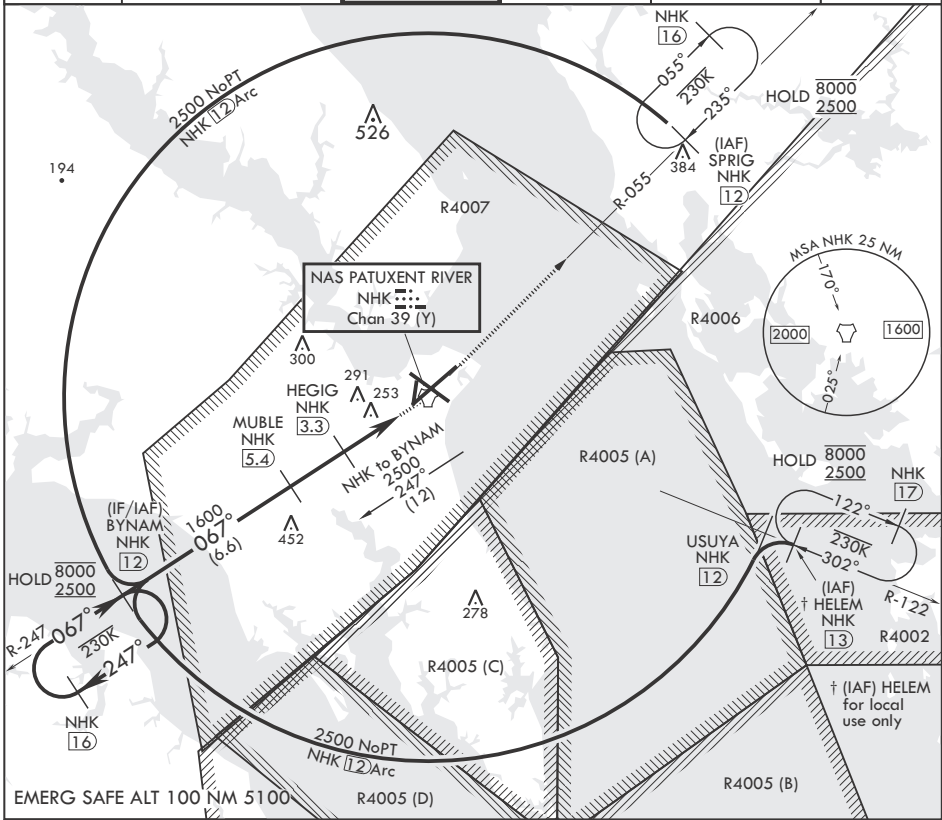
PATUXENT RIVER NAS (TRAPNELL FLD) (KNHK)

▼ * When ALS inop, increase CAT AB vis to 1 mile, CAT CD vis to 1 3/8 miles.

ALSF-1

MISSED APPROACH: Climb to 2500 direct NHK TACAN and NHK R-055 to SPRIG and hold.

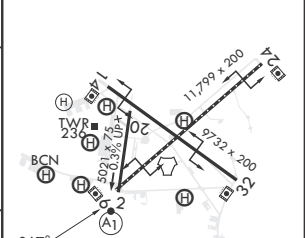
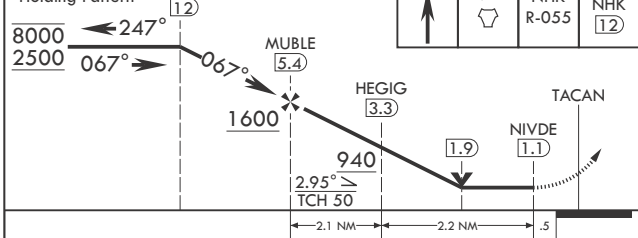
ATIS 322.425	APP CON/DEP CON* 121.0 250.3	TOWER 123.7 343.65	GND CON 120.6 336.4	CLNC DEL 135.2 316.125	ASR/PAR
--------------	------------------------------	--------------------	---------------------	------------------------	---------



EMERG SAFE ALT 100 NM 5100

4NM Holding Pattern BYNAM 12

ELEV 39 TDZE 39



CATEGORY	A	B	C	D
S-6*	520-1/2 481 (500-1/2)	520-1 481 (500-1)	520-1 481 (500-1)	520-1 481 (500-1)
Ⓢ CIRCLING	560-1 521 (600-1)	600-1 561 (600-1)	620-1 581 (600-1/2)	680-2 641 (700-2)



PATUXENT RIVER, MARYLAND 38°17'N - 76°25'W PATUXENT RIVER NAS (TRAPNELL FLD) (KNHK)

Orig 02DEC21

TACAN Z RWY 6

NE-3, 26 DEC 2024 to 23 JAN 2025

NE-3, 26 DEC 2024 to 23 JAN 2025