

WAAS CH 78412 W26A	APP CRS 254°	Rwy Idg TDZE Apt Elev	6301 1487 1497
---------------------------------	------------------------	-----------------------------	---

RNAV (GPS) RWY 26

EASTERN OREGON RGNL AT PENDLETON (PDT)

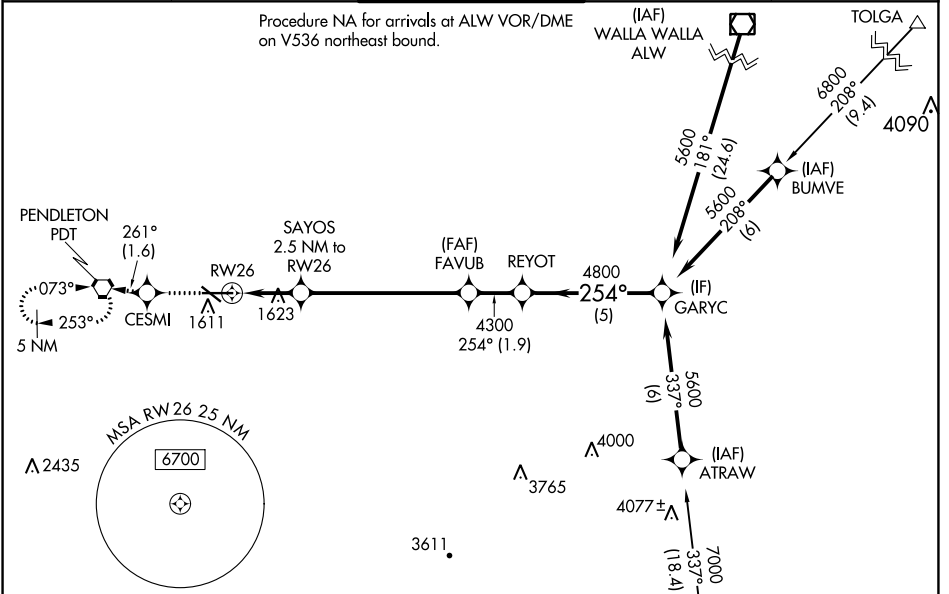
RNP APCH.

⚠ Circling Rwy 11 NA at night. For uncompensated Baro-VNAV systems, LNAV/VNAV NA below -17°C or above 54°C. For inop ALS, increase RNAV/VNAV all Cats visibility to RVR 4500.
#RVR 1800 authorized with the use of FD or AP or HUD to DA.

MALSRL

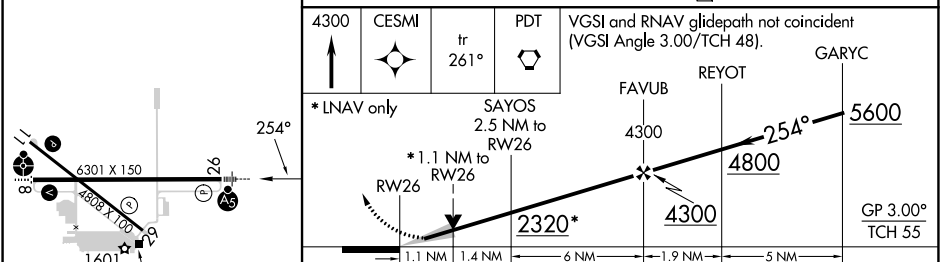
MISSED APPROACH: Climb to 4300 direct CESMI and on track 261° to PDT VORTAC and hold, continue climb-in-hold to 4300.

ASOS 118.325	SPOKANE APP CON * 133.15 379.15	PENDLETON TOWER * 119.7 (CTAF) 257.8	GND CON 121.9 257.8	UNICOM 122.95
------------------------	---	--	-------------------------------	-------------------------



ELEV 1497	D	TDZE 1487
------------------	----------	------------------

Procedure NA for arrivals at LACED on V4 southeast bound.



REIL Rwy 11 and 29	MIRL Rwy 11-29	HIRL Rwy 8-26																													
<table border="1"> <tr> <th>CATEGORY</th> <th>A</th> <th>B</th> <th>C</th> <th>D</th> </tr> <tr> <td>LPV DA#</td> <td colspan="4">1687/24 200 (200-½)</td> </tr> <tr> <td>LNAV/VNAV DA</td> <td colspan="4">1800/24 313 (400-½)</td> </tr> <tr> <td>LNAV MDA</td> <td>1880/24</td> <td>393 (400-½)</td> <td>1880/40</td> <td>393 (400-¾)</td> </tr> <tr> <td rowspan="2">CIRCLING</td> <td>1920-1</td> <td>1960-1</td> <td>1980-1½</td> <td>2200-2¼</td> </tr> <tr> <td>423 (500-1)</td> <td>463 (500-1)</td> <td>483 (500-1½)</td> <td>703 (800-2¼)</td> </tr> </table>			CATEGORY	A	B	C	D	LPV DA#	1687/24 200 (200-½)				LNAV/VNAV DA	1800/24 313 (400-½)				LNAV MDA	1880/24	393 (400-½)	1880/40	393 (400-¾)	CIRCLING	1920-1	1960-1	1980-1½	2200-2¼	423 (500-1)	463 (500-1)	483 (500-1½)	703 (800-2¼)
CATEGORY	A	B	C	D																											
LPV DA#	1687/24 200 (200-½)																														
LNAV/VNAV DA	1800/24 313 (400-½)																														
LNAV MDA	1880/24	393 (400-½)	1880/40	393 (400-¾)																											
CIRCLING	1920-1	1960-1	1980-1½	2200-2¼																											
	423 (500-1)	463 (500-1)	483 (500-1½)	703 (800-2¼)																											

NW-1, 26 DEC 2024 to 23 JAN 2025

NW-1, 26 DEC 2024 to 23 JAN 2025