

24305
AIRPORT DIAGRAM

AL-318 (FAA)

PENSACOLA INTL (PNS)
 PENSACOLA, FLORIDA

ATIS
 121.25
 PENSACOLA TOWER*
 119.9 257.8
 GND CON
 121.9 348.6
 CLNC DEL
 123.725 256.875

△
 211±

↑
 VNR 3.0° W
 JANUARY 2020
 ANNUAL RATE OF CHANGE
 0.1° W

FIELD
 ELEV
 121

30°29.0'N

RWY 08-26
 PCR 780 F/A/X/T
 S-120, D-250, 2D-550, 2D/2D2-1120
 RWY 17-35
 PCR 930 R/B/W/T
 S-120, D-250, 2D-550, 2D/2D2-1058

SE-3, 26 DEC 2024 to 23 JAN 2025

30°28.5'N

30°28.0'N

30°28.0'N

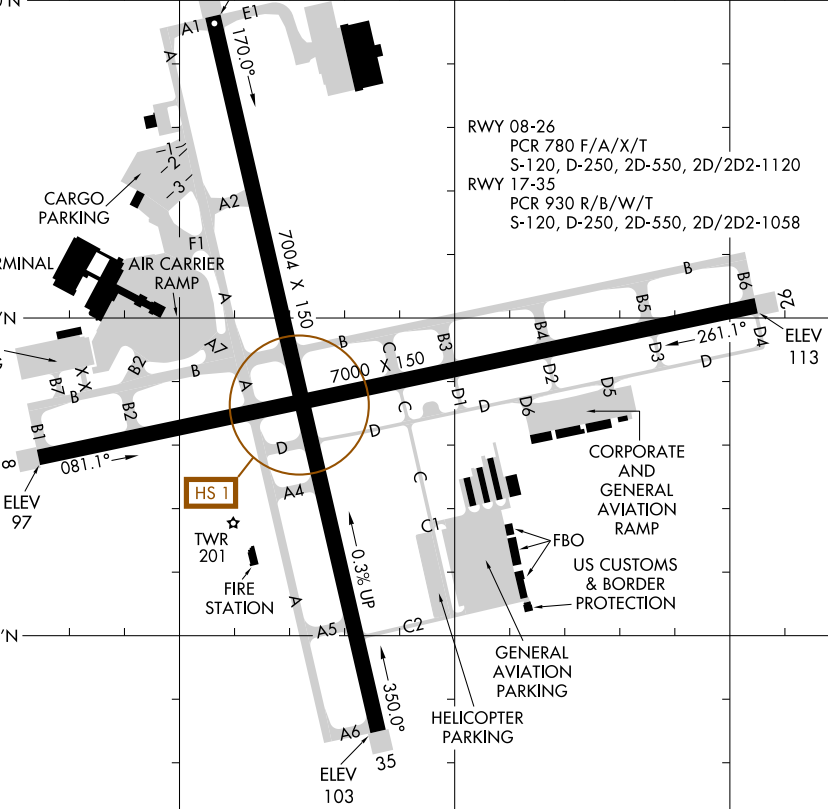
30°27.5'N

87°11.5'W

87°11.0'W

87°10.5'W

SE-3, 26 DEC 2024 to 23 JAN 2025



**CAUTION: BE ALERT TO RUNWAY CROSSING CLEARANCES.
 READBACK OF ALL RUNWAY HOLDING INSTRUCTIONS IS REQUIRED.**

24305
AIRPORT DIAGRAM

PENSACOLA INTL (PNS)
 PENSACOLA, FLORIDA