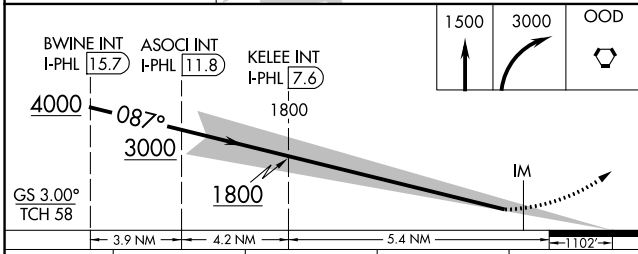
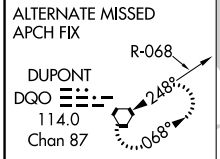
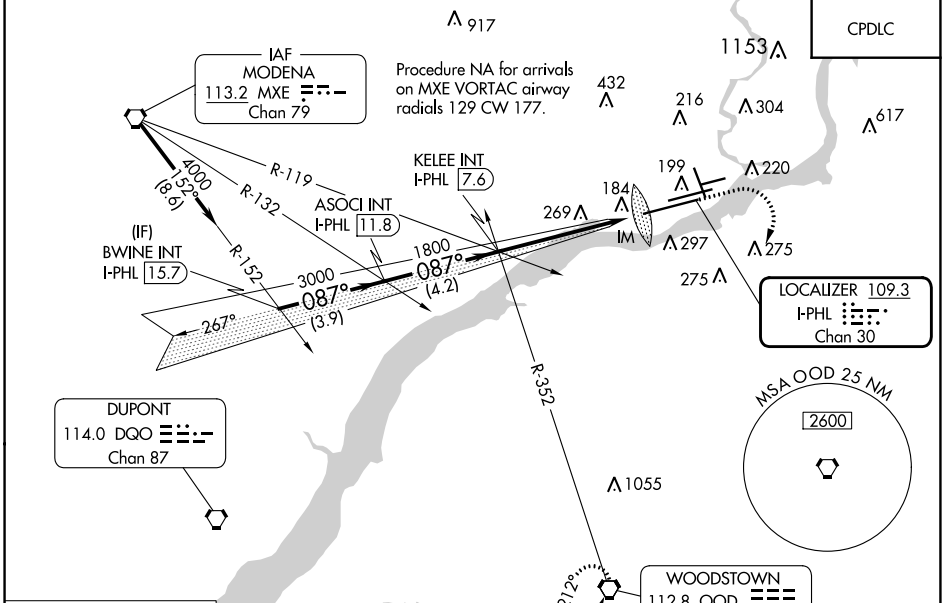


LOC/DME I- <b>PHL</b> <b>109.3</b> Chan <b>30</b>	APP CRS <b>087°</b>	Rwy Idg <b>12000</b> TDZE <b>21</b> Apt Elev <b>36</b>
---	------------------------	--

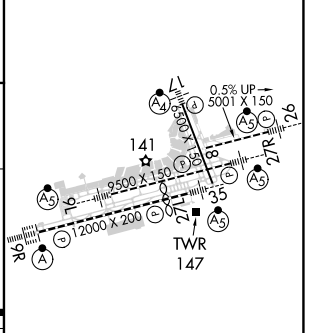
# ILS Z RWY 9R (SA CAT I)

PHILADELPHIA INTL (PHL)

<b>⚠</b> Requires specific OPSPEC, MSPEC, or LOA approval and use of HUD to DH.	<b>ALS-2</b> 	<b>MISSED APPROACH:</b> Climb to 1500 then climbing right turn to 3000 direct OOD VORTAC and hold.		
		D-ATIS ARR <b>133.4</b> DEP <b>135.925</b>	PHILADELPHIA APP CON <b>124.35 319.15</b>	PHILADELPHIA TOWER <b>118.5 327.05</b> (Rwys 9L/27R, 8/26 and 17/35) <b>135.1 327.05</b> (Rwy 9R/27L)



ELEV 36	<b>D</b> TDZE 21
---------	------------------



CATEGORY	A	B	C	D
S-ILS 9R	RA 171/14 150 DA 171			

**SA CATEGORY I ILS - SPECIAL AIRCREW & AIRCRAFT CERTIFICATION REQUIRED**

TDZ/CL Rwy 9R  
HIRL all Rwys  
REIL Rwys 9L and 35

NE-4, 26 DEC 2024 to 23 JAN 2025

NE-4, 26 DEC 2024 to 23 JAN 2025