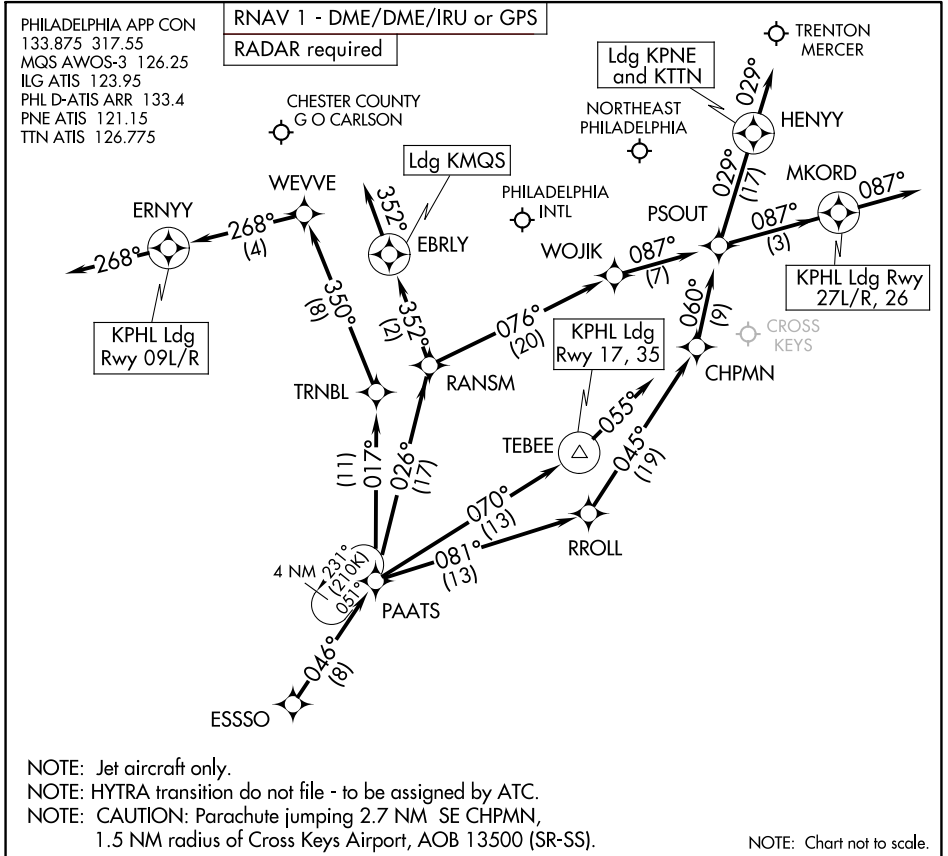




# PAATS FOUR ARRIVAL (RNAV) Arrival Routes

PHILADELPHIA, PENNSYLVANIA



NE-4, 26 DEC 2024 to 23 JAN 2025

NE-4, 26 DEC 2024 to 23 JAN 2025

## ARRIVAL ROUTE DESCRIPTION

**KPHL:** From ESSSO on track 046° to PAATS.

**Landing PHL Rwy 9L/R:** From PAATS on track 017° to TRNBL, then on track 350° to WEVVE, then on track 268° to ERNYY, then on track 268°. Expect RADAR vectors to final approach course.

**Landing PHL Rwy 17, 35:** From PAATS on track 070° to TEBEE, then on track 055°. Expect RADAR vectors to final approach course.

**Landing PHL Rwy 26, 27L/R:** From PAATS on track 081° to RROLL, then on track 045° to CHPMN, then on track 060° to PSOUT, then on track 087° to MKORD, then on track 087°. Expect RADAR vectors to final approach course.

**Landing MQS:** From ESSSO on track 046° to PAATS, then on track 026° to RANSMS, then on track 352° to EBRLY, then on track 352°. Expect RADAR vectors to final approach course.

**Landing TTN/KPNE:** From ESSSO on track 046° to PAATS, then on track 026° to RANSMS, then on track 076° to WOJIK, then on track 087° to PSOUT, then on track 029° to HENNY, then on track 029°. Expect RADAR vectors to final approach course.