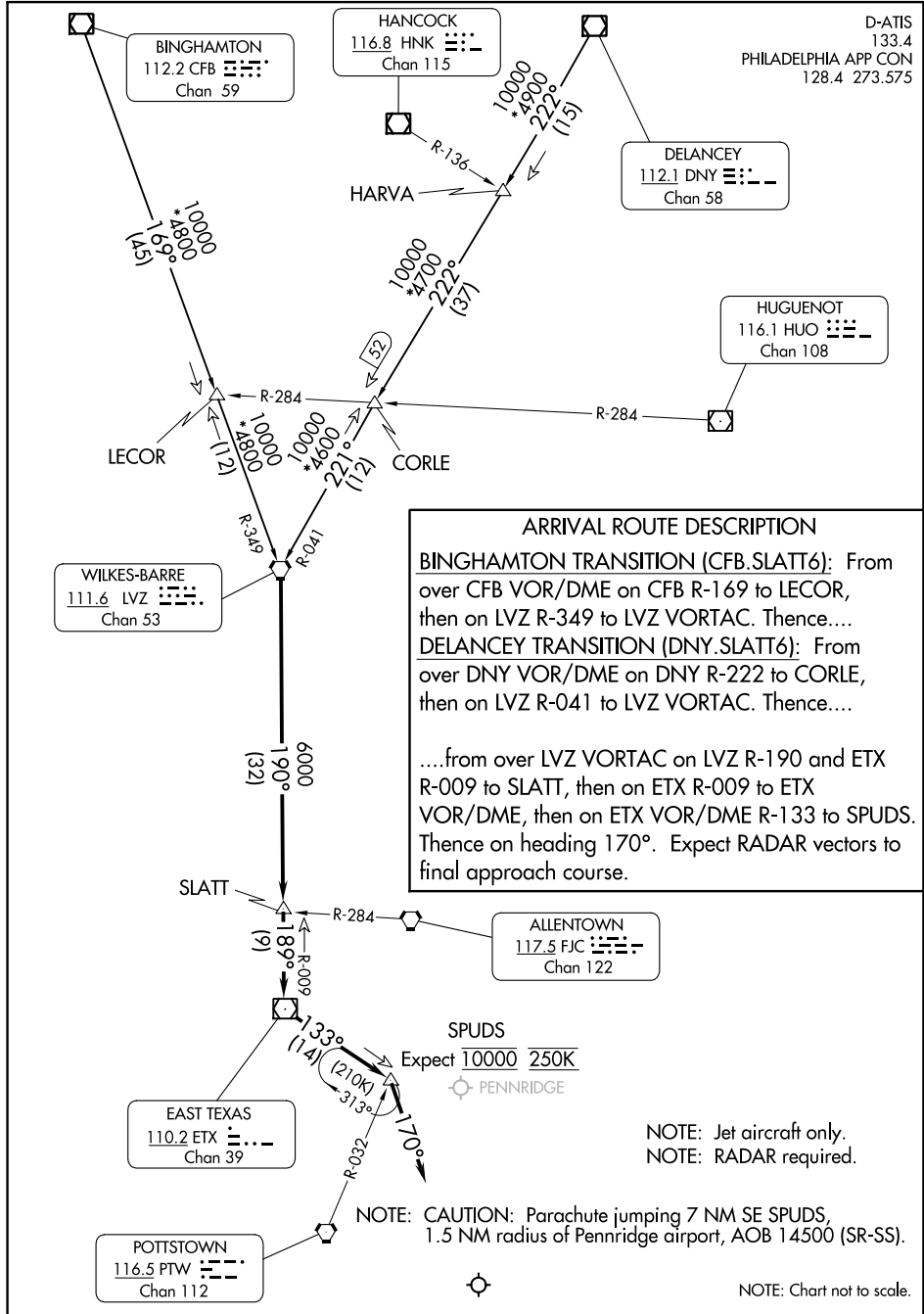


SLATT SIX ARRIVAL

D-ATIS
133.4
PHILADELPHIA APP CON
128.4 273.575



ARRIVAL ROUTE DESCRIPTION

BINGHAMTON TRANSITION (CFB.SLATT6): From over CFB VOR/DME on CFB R-169 to LECOR, then on LVZ R-349 to LVZ VORTAC. Thence....

DELANCEY TRANSITION (DNY.SLATT6): From over DNY VOR/DME on DNY R-222 to CORLE, then on LVZ R-041 to LVZ VORTAC. Thence....

....from over LVZ VORTAC on LVZ R-190 and ETX R-009 to SLATT, then on ETX R-009 to ETX VOR/DME, then on ETX VOR/DME R-133 to SPUDS. Thence on heading 170°. Expect RADAR vectors to final approach course.

SPUDS
Expect 10000 250K
PENNRIDGE

NOTE: Jet aircraft only.
NOTE: RADAR required.

NOTE: CAUTION: Parachute jumping 7 NM SE SPUDS, 1.5 NM radius of PennrIDGE airport, AOB 14500 (SR-SS).

NOTE: Chart not to scale.

NE-4, 26 DEC 2024 to 23 JAN 2025

NE-4, 26 DEC 2024 to 23 JAN 2025

SLATT SIX ARRIVAL