

ARLIN FOUR ARRIVAL

AL-322 (FAA)

PHOENIX, ARIZONA

SW-4, 26 DEC 2024 to 23 JAN 2025

ARRIVAL ROUTE DESCRIPTION

BLYTE TRANSITION (BLH.ARLIN4): From over BLH VORTAC on BLH R-089 and IWA R-256 to ARLIN INT. Thence. . . .

MOHAK TRANSITION (MOHAK.ARLIN4): From over MOHAK INT on GBN R-247 and BXK R-215 to HYDRR INT, then on IWA R-256 to ARLIN INT. Thence. . . .

PHOENIX SKY HARBOR INTL: Rwy 7L/R or 8: From over ARLIN, Expect vectors to final approach course; Rwy 25L/R or 26: From over ARLIN, on IWA R-256 to TUKEE. Expect vectors to final approach course prior to TUKEE.

SATELLITE AIRPORTS: Expect vectors after passing SCOPE or JUDTH.

LOST COMMUNICATIONS: After ARLIN, on IWA R-256 and PXR R-143 to PXR VORTAC.

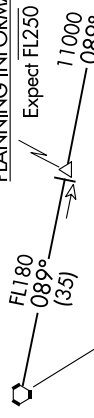
NOTE: BLYTHE Transition for turbojet aircraft FL240 and above.
Turboprop aircraft plan BLYTHE ARRIVAL at or below FL230.

NOTE: MOHAK Transition for turbojet and turboprop aircraft.

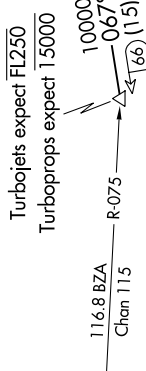
NOTE: Turboprops landing KPHX expect vectors after passing SCOPE or JUDTH.

SCOPE

VERTICAL NAVIGATION PLANNING INFORMATION



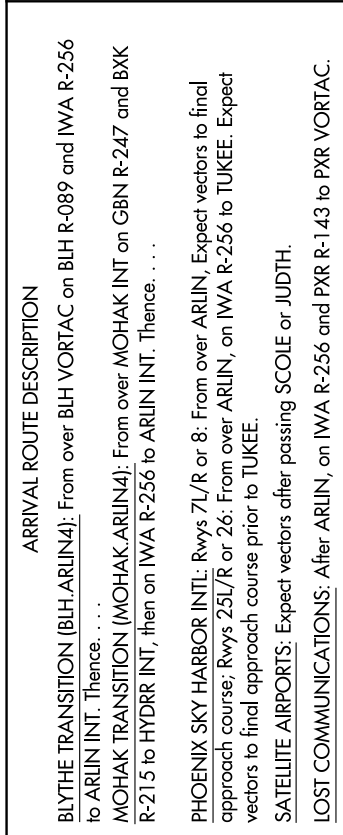
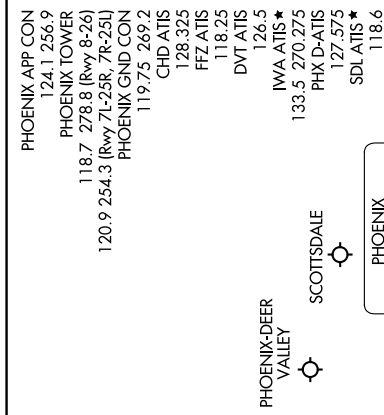
MOHAK VERTICAL NAVIGATION PLANNING INFORMATION



VERTICAL NAVIGATION PLANNING INFORMATION

Landing WEST:
Turbojets expect 14000
Turbojets expect 12000

Landing EAST:
Turbojets expect 14000
Turbojets expect 12000



NOTE: RADAR required
NOTE: DME required
NOTE: Chart not to scale.

ARLIN FOUR ARRIVAL

PHOENIX, ARIZONA

SW-4, 26 DEC 2024 to 23 JAN 2025