

BLYTHE FIVE ARRIVAL

AL-322 (FAA)

PHOENIX, ARIZONA

SW-4, 26 DEC 2024 to 23 JAN 2025

ARRIVAL ROUTE DESCRIPTION

BLYTHE TRANSITION (BLH.BLH5): From over BLH VORTAC on BLH R-082 to SALOM, then on GBN R-285 and IWA R-256 to ARLIN. Thence

PHOENIX SKY HARBOR INTL: Rwy 7L/R or 8: From over ARLIN, expect vectors to final approach course; Rwy 25L/R or 26: From over ARLIN, on IWA R-256 to TUKEE. Expect vectors to final approach course prior to TUKEE.
SATELLITE AIRPORTS: Expect vectors after passing SALOM.

LOST COMMUNICATIONS: After ARLIN, on IWA R-256 and PXR R-143 to PXR VORTAC.

SALOM

VERTICAL NAVIGATION PLANNING INFORMATION
Turboprop expect 17000
Turboprop landing KPHX expect vectors after SALOM.

BLYTHE
117.4 BLH
Chan 121

BUCKEYE
110.6 BKK
Chan 43

PHOENIX
115.6 PXR
Chan 103

PHOENIX APP CON
124.1 256.9
PHOENIX TOWER
118.7 278.8 (Rwy 8-26)
120.9 254.3 (Rwy 7L-25R, 7R-25L)
PHOENIX GND CON
119.75 269.2
CHD ATIS
128.325
FFZ ATIS
118.25
DVT ATIS
126.5
IWA ATIS *
133.5 270.275
PHX D-ATIS
127.575
SDL ATIS *
118.6

FALCON
FLD

SCOTTSDALE

PHOENIX-DEER VALLEY

PHOENIX-SKY HARBOR INTL

ARLIN

HYDRR

SADIL

BUCKEYE

ARLN

AMBRRR

STELLAR AIRPARK

TUKEE

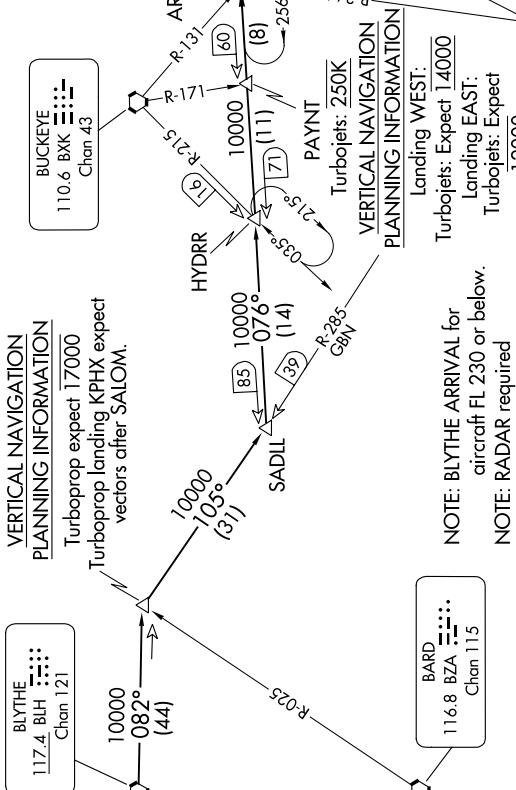
CHANDLER MUNI

PHOENIX-MESA GATEWAY

WILLIE
113.3 IWA
Chan 80

GILA BEND
116.6 GBN
Chan 113

BARD
116.8 BZA
Chan 115



NOTE: Chart not to scale.

BLYTHE FIVE ARRIVAL

PHOENIX, ARIZONA

SW-4, 26 DEC 2024 to 23 JAN 2025