

# BUNTR THREE ARRIVAL

PHOENIX APP CON  
128.65 353.9  
PHOENIX TOWER  
118.7 278.8 (Rwy 8-26)  
120.9 254.3 (Rwy 7L-25R, 7R-25L)  
GND CON  
119.75 269.2  
D-ATIS  
127.575

WINSLOW  
112.6 INW  
Chan 73

GALLUP  
115.1 GUP  
Chan 98

ZUNI  
113.4 ZUN  
Chan 81

ST JOHNS  
112.3 SJN  
Chan 70

DRAKE  
114.1 DRK  
Chan 88

VERTICAL NAVIGATION  
PLANNING INFORMATION

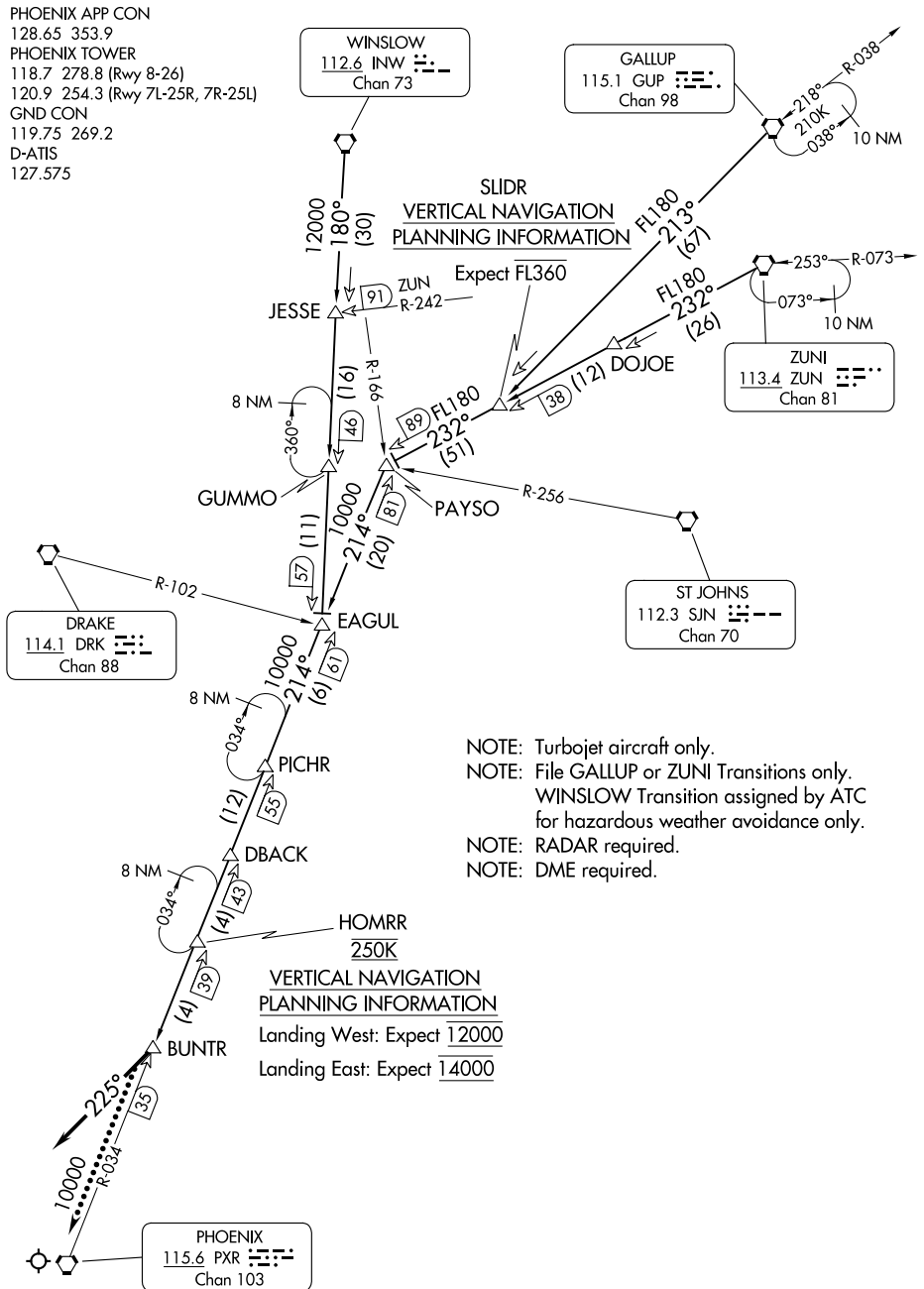
Expect FL360

VERTICAL NAVIGATION  
PLANNING INFORMATION

Landing West: Expect 12000

Landing East: Expect 14000

- NOTE: Turbojet aircraft only.
- NOTE: File GALLUP or ZUNI Transitions only.
- WINSLOW Transition assigned by ATC for hazardous weather avoidance only.
- NOTE: RADAR required.
- NOTE: DME required.



SW-4, 26 DEC 2024 to 23 JAN 2025

SW-4, 26 DEC 2024 to 23 JAN 2025

NOTE: Chart not to scale.

(CONTINUED ON FOLLOWING PAGE)

ARRIVAL ROUTE DESCRIPTION

GALLUP TRANSITION (GUP.BUNTR3): From over GUP VORTAC on GUP R-213 to SLIDR then on ZUN R-232 to PAYSO, then on PXR R-034 to BUNTR. Thence. . . .

WINSLOW TRANSITION (INW.BUNTR3): From over INW VORTAC on INW R-180 to EAGUL, then on PXR R-034 to BUNTR. Thence. . . .

ZUNI TRANSITION (ZUN.BUNTR3): From over ZUN VORTAC via ZUN R-232 to PAYSO, then via PXR R-034 to BUNTR. Thence. . . .

. . . . From BUNTR, fly heading 225°. Expect vectors to final approach course.

LOST COMMUNICATIONS: After BUNTR proceed direct PXR VORTAC.

SW-4, 26 DEC 2024 to 23 JAN 2025

SW-4, 26 DEC 2024 to 23 JAN 2025