

HI-TACAN Y RWY 30

TACAN MUO Chan 87	APCH CRS 295°	Rwy Idg 13,510 TDZE 2996 Arprt Elev 2996
-----------------------------	-------------------------	---

[USAF]

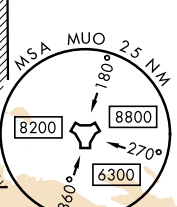
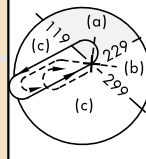
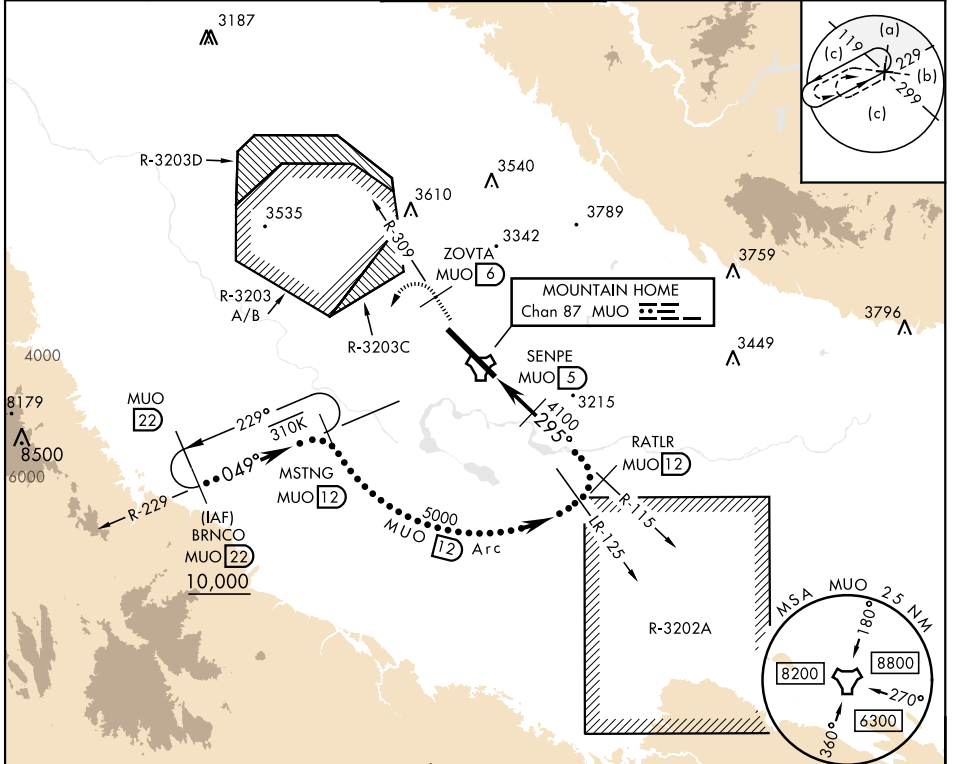
MOUNTAIN HOME AFB (KMUO)

V * When ALS inop, increase CAT CDE vis to 1 3/8 miles.
 ** Circling NA NE of Rwy 12-30.



MISSED APPROACH: Climb to 10,000 via MUO R-309 to ZOVRTA/6 DME, turn left and intercept MUO R-229 to MSTNG/12 DME and hold. Continue climb in hold to 10,000.

ATIS 273.5	MOUNTAIN HOME APP CON 124.8 259.1	MOUNTAIN HOME TOWER 133.85 253.5	GND CON 120.5 275.8	CLNC DEL 127.1 290.425
----------------------	---	--	-------------------------------	----------------------------------



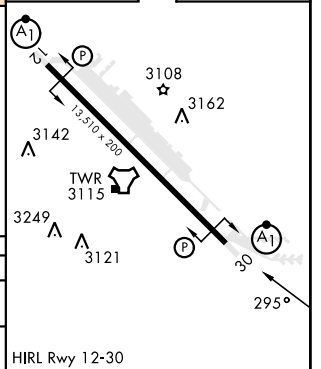
NW-1, 26 DEC 2024 to 23 JAN 2025

NW-1, 26 DEC 2024 to 23 JAN 2025

EMERG SAFE ALT 100 NM 14,200

10,000	ZOVTA MUO R-309	MSTNG MUO 12	SENPE MUO 5	RATLR MUO 12	MSTNG MUO 12	BRNCO MUO 22
↑	MUO 6	MUO 12	MUO 5	MUO 12	MUO 12	MUO 22
↑	MUO TACAN	JERLU MUO 27	MUO 12	MUO 12	MUO 12	MUO 22
↑	MUO 12	MUO 27	MUO 12	MUO 12	MUO 12	MUO 22
↑	MUO 12	MUO 27	MUO 12	MUO 12	MUO 12	MUO 22
↑	MUO 12	MUO 27	MUO 12	MUO 12	MUO 12	MUO 22
↑	MUO 12	MUO 27	MUO 12	MUO 12	MUO 12	MUO 22
↑	MUO 12	MUO 27	MUO 12	MUO 12	MUO 12	MUO 22
↑	MUO 12	MUO 27	MUO 12	MUO 12	MUO 12	MUO 22
↑	MUO 12	MUO 27	MUO 12	MUO 12	MUO 12	MUO 22
↑	MUO 12	MUO 27	MUO 12	MUO 12	MUO 12	MUO 22

ELEV	2996	TDZE	2996
------	------	------	------



HI-TACAN Y RWY 30