

MOUNTAIN HOME, IDAHO

ILS or LOC Z RWY 30

MOUNTAIN HOME AFB (KMUO)

LOC I-BRN 111.7	APCH CRS 302°	Rwy Idg 13,510 TDZE 2996 Arprt Elev 2996
---------------------------	-------------------------	---

[USAF]

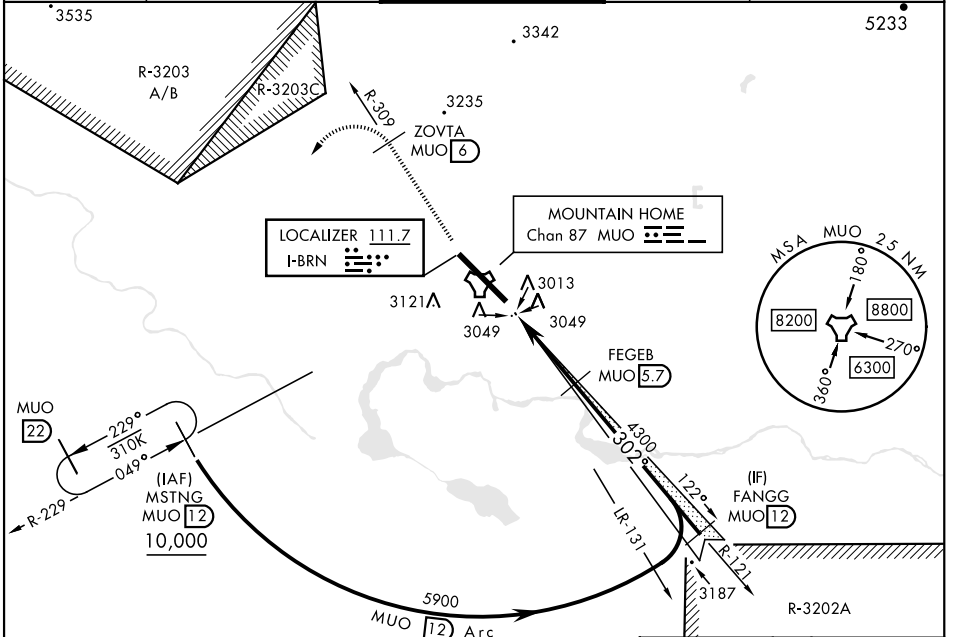
RADAR or DME required.

- ▼ * When ALS inop, increase RVR to 47 and vis to 1 mile.
- ** * When ALS inop, increase CAT AB RVR to 55 and vis to 1 mile, CAT CDE vis to 1 3/8 miles.
- *** Circling NA NE of Rwy 12-30.

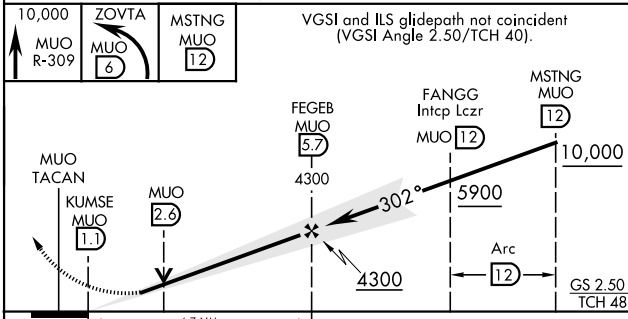


MISSED APPROACH: Climb to 10,000 via MUO R-309 to ZOVRTA/6 DME, turn left and intcp MUO R-229 to MSTNG/12 DME and hold. Continue climb in hold to 10,000.

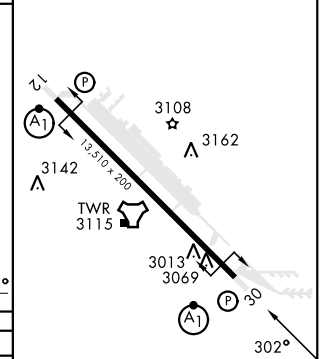
ATIS 273.5	MOUNTAIN HOME APP CON 124.8 259.1	MOUNTAIN HOME TOWER 133.85 253.5	GND CON 120.5 275.8	CLNC DEL 127.1 290.425
----------------------	---	--	-------------------------------	----------------------------------



EMERG SAFE ALT 100 NM 14,200



ELEV 2996	TDZE 2996
-----------	-----------



CATEGORY	A	B	C	D	E
S-ILS 30 *	3246/40 250 (300-3/4)				
S-LOC 30 **	3460/24	464 (500-1/2)	3460/50 464 (500-1)		
CIRCLING ***	3520-1	3560-1	3560-1 1/2	3560-2	3700-2 1/2
	524 (600-1)	564 (600-1)	564 (600-1 1/2)	564 (600-2)	704 (800-2 1/2)

HIRL Rwy 12-30

MOUNTAIN HOME, IDAHO

43°03'N-115°52'W

MOUNTAIN HOME AFB (KMUO)

Amdt 3 18JUN20

ILS or LOC Z RWY 30

NW-1, 26 DEC 2024 to 23 JAN 2025

NW-1, 26 DEC 2024 to 23 JAN 2025