

# TACAN Z RWY 30

MOUNTAIN HOME AFB (KMUO)

TACAN MUO Chan <b>87</b>	APCH CRS <b>295°</b>	Rwy Idg <b>13,510</b> TDZE <b>2996</b> Arprt Elev <b>2996</b>
--------------------------	----------------------	---

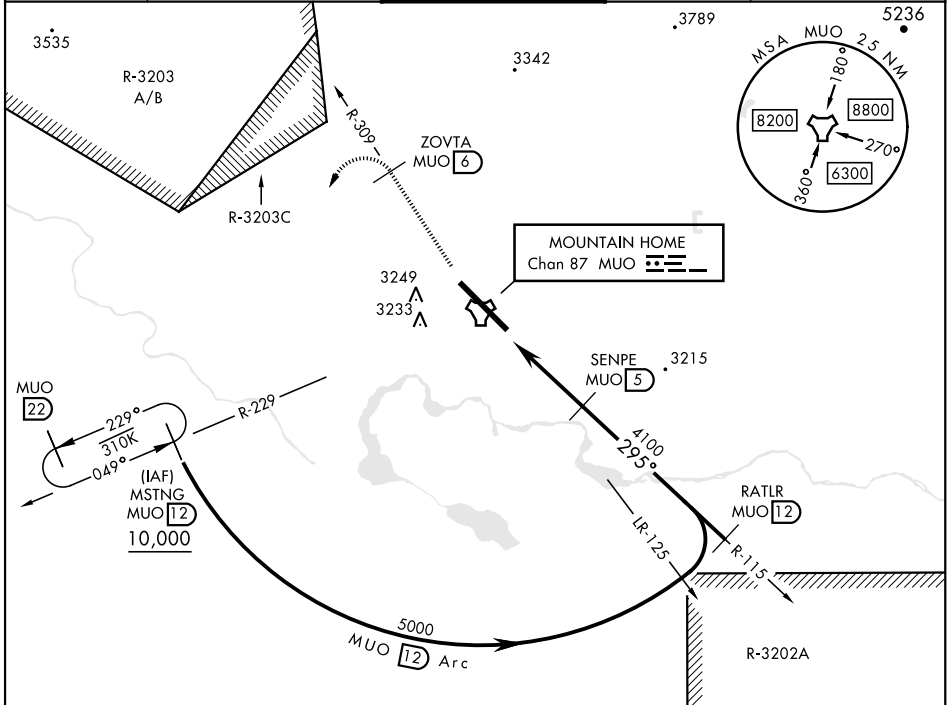
[USAF]

▼ \* When ALS inop, increase CAT AB RVR to 55 and vis to 1 mile, CAT CDE vis to 1½ miles.  
 \*\* Circling NA NE of Rwy 12-30.



**MISSED APPROACH:** Climb to 10,000 via MUO R-309 to ZOVRTA/6 DME, turn left and intercept MUO R-229 to MSTNG/12 DME and hold. Continue climb in hold to 10,000.

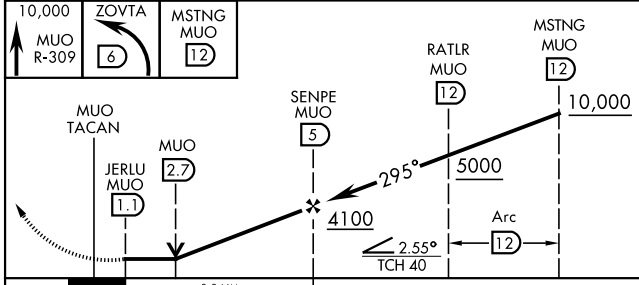
ATIS <b>273.5</b>	MOUNTAIN HOME APP CON <b>124.8 259.1</b>	MOUNTAIN HOME TOWER <b>133.85 253.5</b>	GND CON <b>120.5 275.8</b>	CLNC DEL <b>127.1 290.425</b>
-------------------	--	---	----------------------------	-------------------------------



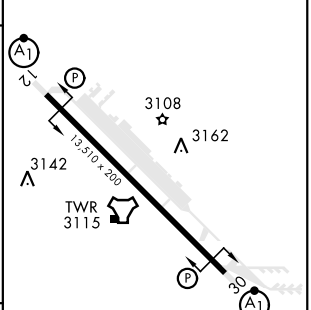
NW-1, 26 DEC 2024 to 23 JAN 2025

NW-1, 26 DEC 2024 to 23 JAN 2025

EMERG SAFE ALT 100 NM 14,200



ELEV	2996	TDZE	2996
------	------	------	------



CATEGORY	A	B	C	D	E
S-30 *	3480/24 484 (500-½)		3480/50 484 (500-1)		
CIRCLING **	3520-1 524 (600-1)	3560-1 564 (600-1)	3560-1½ 564 (600-1½)	3560-2 564 (600-2)	3700-2½ 704 (800-2½)

HIRL Rwy 12-30

# TACAN Z RWY 30