

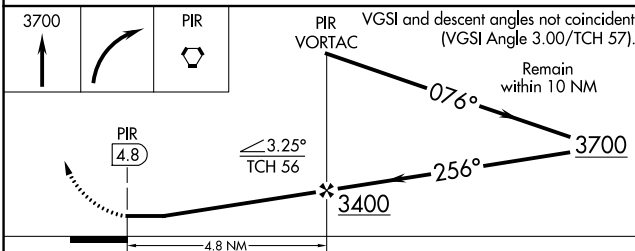
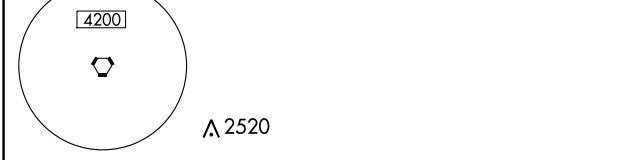
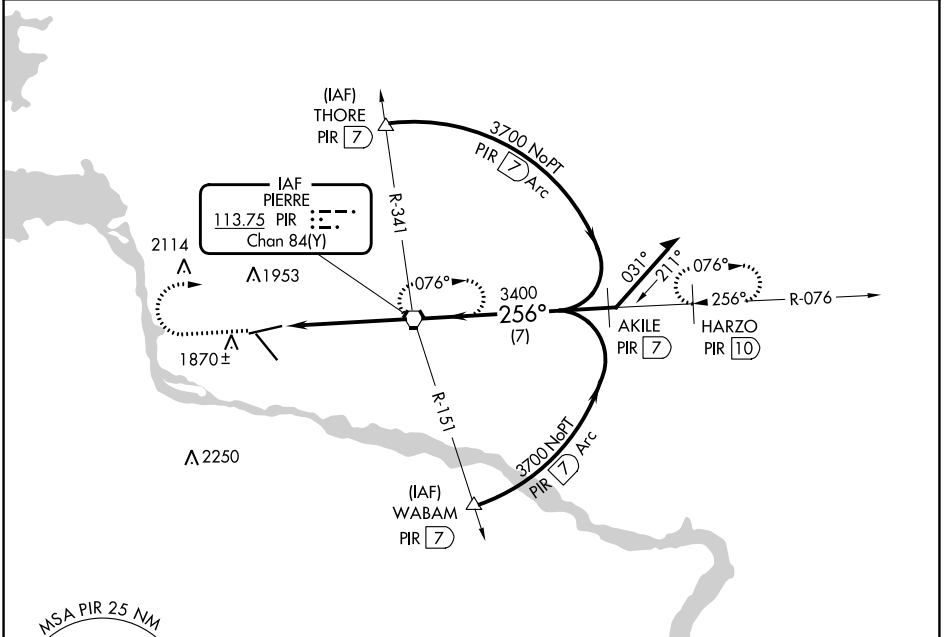
VORTAC PIR <b>113.75</b> Chan <b>84(Y)</b>	APP CRS <b>256°</b>	Rwy ldg TDZE Apt Elev	<b>6880</b> <b>1725</b> <b>1744</b>
--	------------------------	-----------------------------	---

# VOR or TACAN RWY 25

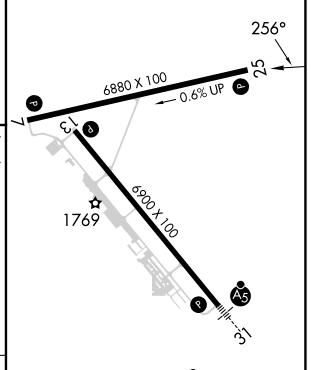
PIERRE RGNL (PIR)

**⚠** MISSED APPROACH: Climb to 3700 then right turn direct PIR VORTAC and hold. (TACAN aircraft continue via PIR R-076 to HARZO 10 DME and hold east, right turns, 256° inbound)

ASOS <b>119.025</b>	MINNEAPOLIS CENTER <b>125.1 269.1</b>	CTAF <b>122.7</b>	UNICOM <b>122.95</b>
------------------------	--	----------------------	-------------------------



ELEV 1744	<b>D</b> TDZE 1725
-----------	--------------------



CATEGORY	A	B	C	D
S-25	2120-1	395 (400-1)		2120-1½ 395 (400-1½)
<b>C</b> CIRCLING	2240-1 496 (500-1)	2300-1 556 (600-1)	2400-1¾ 656 (700-1¾)	2460-2¼ 716 (800-2¼)
				REIL Rwy 7, 13, and 25 <b>Ⓛ</b> HIRL Rwy 7-25 and 13-31 <b>Ⓛ</b>
				FAF to MAP 4.8 NM
				Knots: 60 90 120 150 180 Min:Sec: 4:48 3:12 2:24 1:55 1:36

# VOR or TACAN RWY 25

NC-1, 26 DEC 2024 to 23 JAN 2025

NC-1, 26 DEC 2024 to 23 JAN 2025