

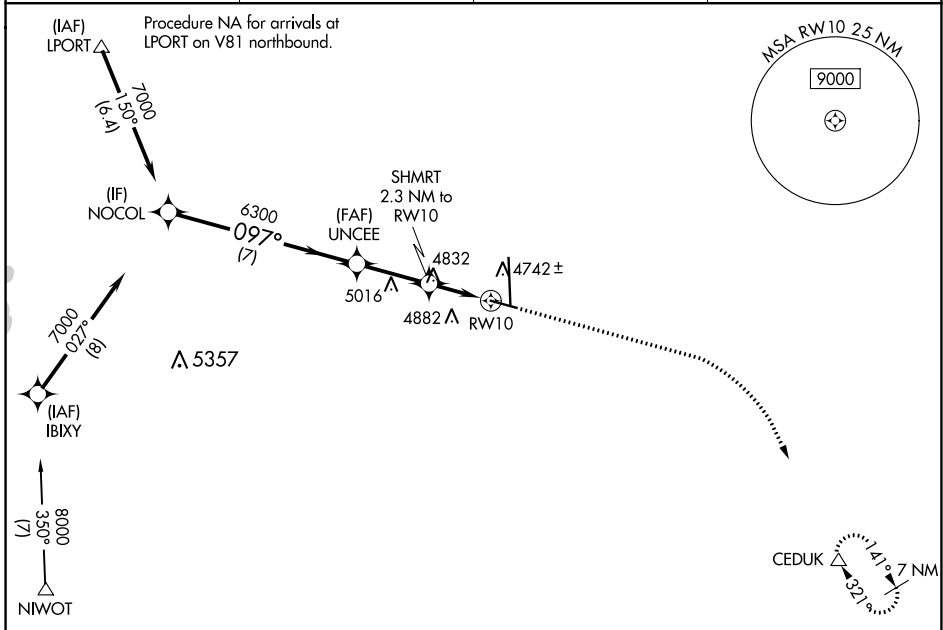
WAAS CH <b>62900</b> W10A	APP CRS <b>097°</b>	Rwy Idg TDZE Apt Elev	<b>5801</b> <b>4661</b> <b>4697</b>
---------------------------------	------------------------	-----------------------------	---

# RNAV (GPS) RWY 10

GREELEY-WELD COUNTY (GXY)

RNP APCH.	MISSED APPROACH: Climb to 5400 then climbing right turn to 7000 direct CEDUK and hold.
<p>▼ For uncompensated Baro-VNAV systems, LNAV/VNAV NA below -24°C or above 54°C.</p> <p>▲</p>	

AWOS-3PT <b>135.175</b>	DENVER APP CON <b>134.85 251.125</b>	CLNC DEL <b>126.65</b>	UNICOM <b>122.7 (CTAF) 0</b>
----------------------------	---	---------------------------	---------------------------------



SW-1, 26 DEC 2024 to 23 JAN 2025

SW-1, 26 DEC 2024 to 23 JAN 2025

VGSi and RNAV glidepath not coincident NOCOL (VGSi Angle 3.00/TCH 43).				
7000		UNCEE		5400 7000 CEDUK
097°		SHMRT 2.3 NM to RW10		*LNAV only
6300		*1.4 NM to RW10		
GP 3.00°		*5440		
TCH 50		7 NM 2.7 NM 0.9 NM 1.4 NM		
CATEGORY	A	B	C	D
LPV DA		4911-3/4	250 (300-3/4)	
LNAV/VNAV DA		4920-3/4	259 (300-3/4)	
LNAV MDA	5140-1	479 (500-1)	5140-13/8	479 (500-13/8)
CIRCLING	5140-1 443 (500-1)	5200-1 503 (600-1)	5200-1 1/2 503 (600-1 1/2)	5380-2 1/4 683 (700-2 1/4)

